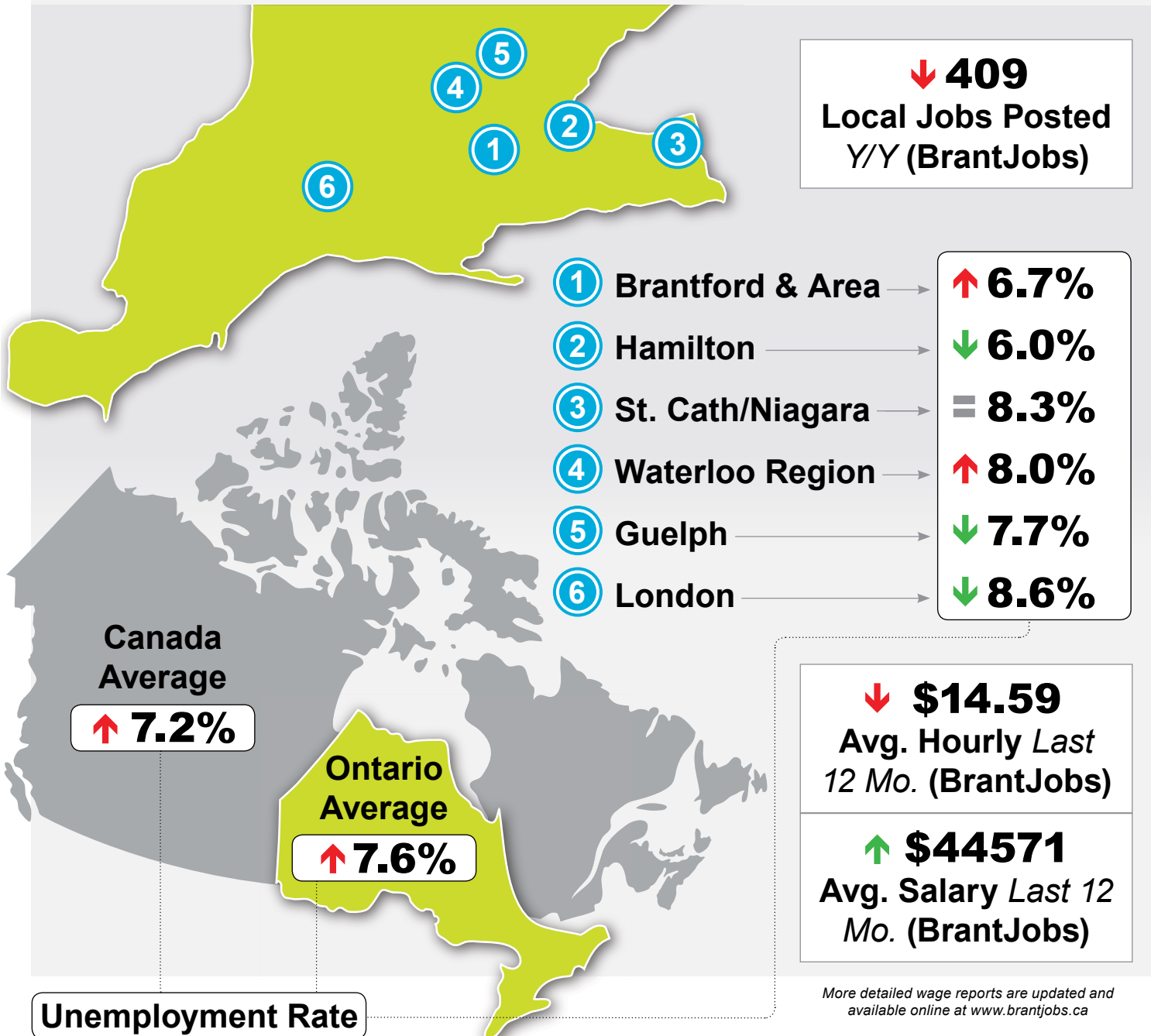


July 2013

Local Labour Market Report*



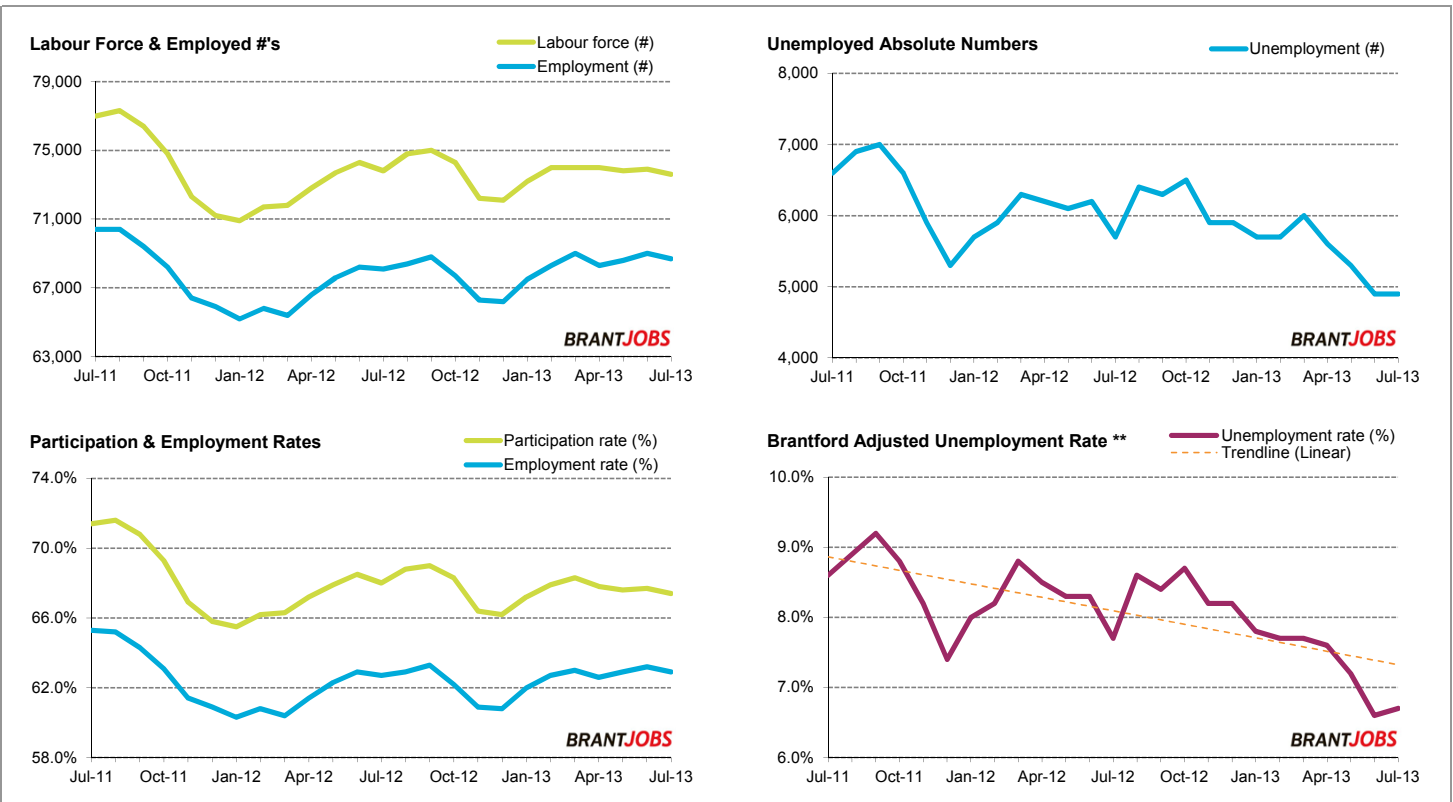
Unemployment Rate

↓ **\$14.59**
Avg. Hourly Last 12 Mo. (BrantJobs)

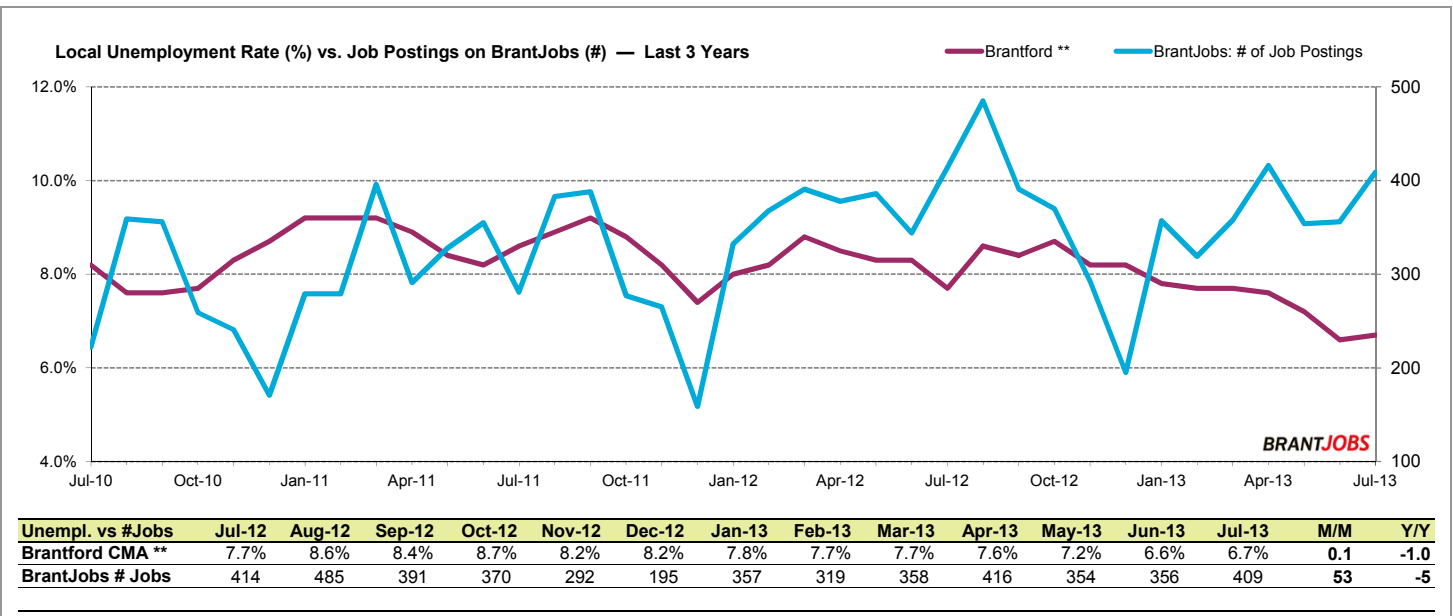
↑ **\$44571**
Avg. Salary Last 12 Mo. (BrantJobs)

More detailed wage reports are updated and available online at www.brantjobs.ca

*Source: Statistics Canada and BrantJobs. Both must be credited when data from this report is used. Municipal rates are reported as 3 month moving averages; provincial and national rates are reported monthly. On this page, **changes are compared to the previous month, unless otherwise indicated.** Prepared by BrantJobs, available online at www.brantjobs.ca.



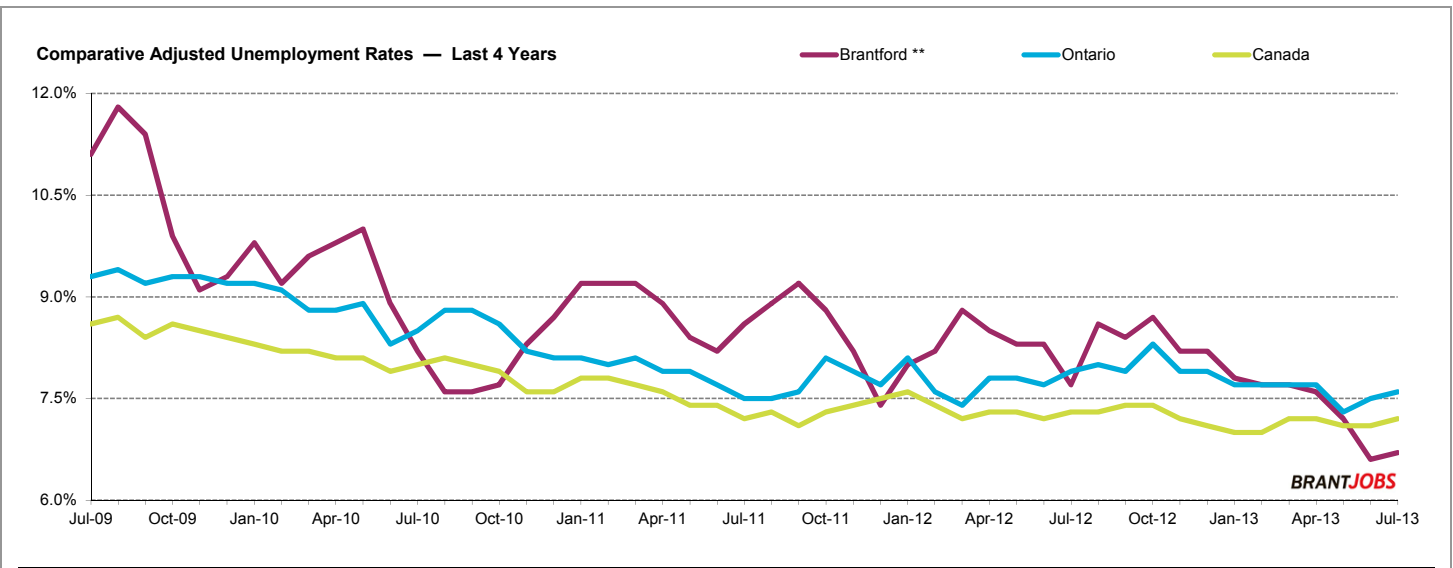
Brantford CMA	Jul-12	Aug-12	Sep-12	Oct-12	Nov-12	Dec-12	Jan-13	Feb-13	Mar-13	Apr-13	May-13	Jun-13	Jul-13	M/M	Y/Y
Total Population	108,600	108,700	108,700	108,800	108,800	108,900	108,900	109,000	109,000	109,100	109,100	109,200	109,200	0	600
Labour Force	73,800	74,800	75,000	74,300	72,200	72,100	73,200	74,000	74,000	74,000	73,800	73,900	73,600	-300	-200
Employed	68,100	68,400	68,800	67,700	66,300	66,200	67,500	68,300	69,000	68,300	68,600	69,000	68,700	-300	600
Unemployed	5,700	6,400	6,300	6,500	5,900	5,900	5,700	5,700	6,000	5,600	5,300	4,900	4,900	0	-800
Unemploy't Rate	7.7%	8.6%	8.4%	8.7%	8.2%	8.2%	7.8%	7.7%	7.7%	7.6%	7.2%	6.6%	6.7%	0.1	-1.0
Participat'n Rate	68.0%	68.8%	69.0%	68.3%	66.4%	66.2%	67.2%	67.9%	68.3%	67.8%	67.6%	67.7%	67.4%	-0.3	-0.6
Employ'm't Rate	62.7%	62.9%	63.3%	62.2%	60.9%	60.8%	62.0%	62.7%	63.0%	62.6%	62.9%	63.2%	62.9%	-0.3	0.2



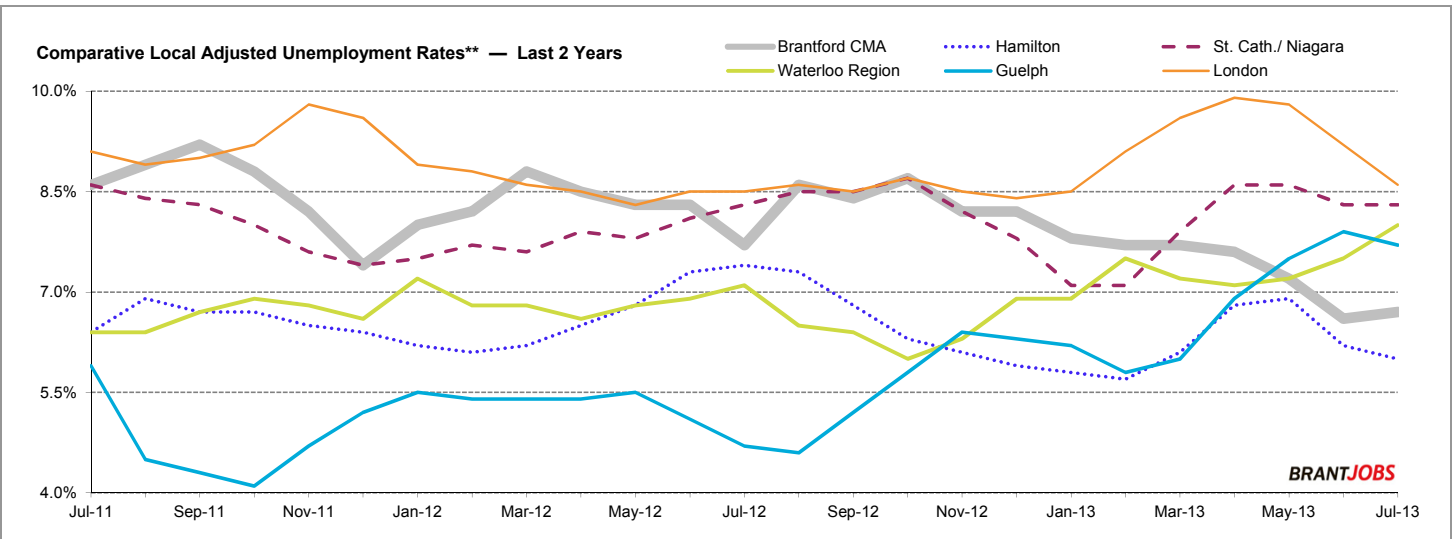
Unempl. vs #Jobs	Jul-12	Aug-12	Sep-12	Oct-12	Nov-12	Dec-12	Jan-13	Feb-13	Mar-13	Apr-13	May-13	Jun-13	Jul-13	M/M	Y/Y
Brantford CMA **	7.7%	8.6%	8.4%	8.7%	8.2%	8.2%	7.8%	7.7%	7.7%	7.6%	7.2%	6.6%	6.7%	0.1	-1.0
BrantJobs # Jobs	414	485	391	370	292	195	357	319	358	416	354	356	409	53	-5

* Source: Stats Canada. Statistics Canada and BrantJobs.ca must be credited when data from this report is used.

** Municipal rates are reported as 3 month moving averages; provincial and national rates are reported monthly.



Unemployment %	Jul-12	Aug-12	Sep-12	Oct-12	Nov-12	Dec-12	Jan-13	Feb-13	Mar-13	Apr-13	May-13	Jun-13	Jul-13	M/M	Y/Y
Brantford CMA **	7.7%	8.6%	8.4%	8.7%	8.2%	8.2%	7.8%	7.7%	7.7%	7.6%	7.2%	6.6%	6.7%	0.1	-1.0
Ontario	7.9%	8.0%	7.9%	8.3%	7.9%	7.9%	7.7%	7.7%	7.7%	7.7%	7.3%	7.5%	7.6%	0.1	-0.3
Canada	7.3%	7.3%	7.4%	7.4%	7.2%	7.1%	7.0%	7.0%	7.2%	7.2%	7.1%	7.1%	7.2%	0.1	-0.1



Unemployment %	Jul-12	Aug-12	Sep-12	Oct-12	Nov-12	Dec-12	Jan-13	Feb-13	Mar-13	Apr-13	May-13	Jun-13	Jul-13	M/M	Y/Y
Brantford CMA	7.7%	8.6%	8.4%	8.7%	8.2%	8.2%	7.8%	7.7%	7.7%	7.6%	7.2%	6.6%	6.7%	0.1	-1.0
Hamilton	7.4%	7.3%	6.8%	6.3%	6.1%	5.9%	5.8%	5.7%	6.1%	6.8%	6.9%	6.2%	6.0%	-0.2	-1.4
St. Cath./ Niagara	8.3%	8.5%	8.5%	8.7%	8.2%	7.8%	7.1%	7.1%	7.9%	8.6%	8.6%	8.3%	8.3%	0.0	0.0
Waterloo Region	7.1%	6.5%	6.4%	6.0%	6.3%	6.9%	6.9%	7.5%	7.2%	7.1%	7.2%	7.5%	8.0%	0.5	0.9
Guelph	4.7%	4.6%	5.2%	5.8%	6.4%	6.3%	6.2%	5.8%	6.0%	6.9%	7.5%	7.9%	7.7%	-0.2	3.0
London	8.5%	8.6%	8.5%	8.7%	8.5%	8.4%	8.5%	9.1%	9.6%	9.9%	9.8%	9.2%	8.6%	-0.6	0.1

* Source: Stats Canada. Statistics Canada and BrantJobs.ca must be credited when data from this report is used.

** Municipal rates are reported as 3 month moving averages; provincial and national rates are reported monthly.

Data for the County of Brant is not reported separately by Stats Canada.

Prepared by BrantJobs and available online at www.brantjobs.ca.

