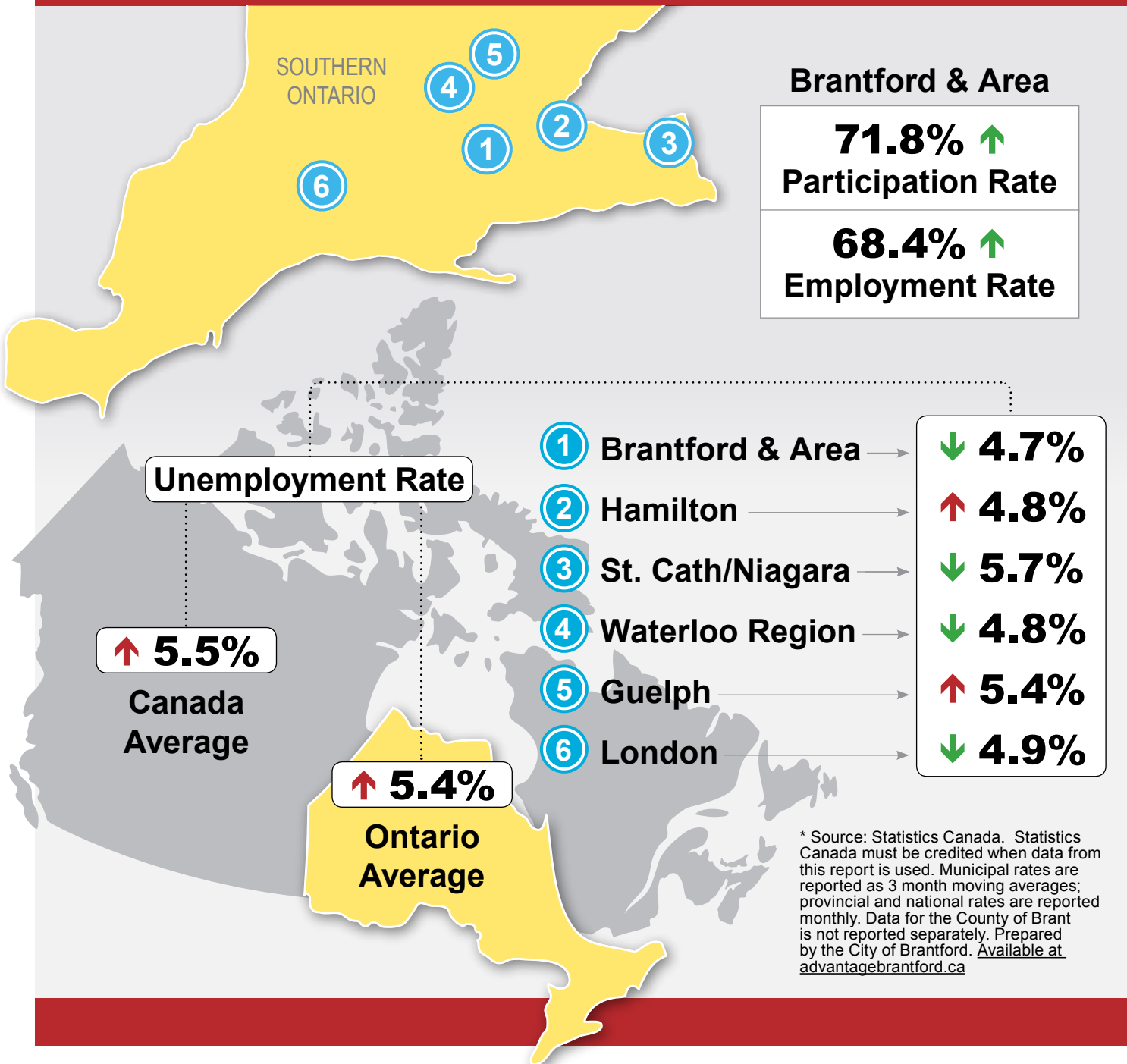
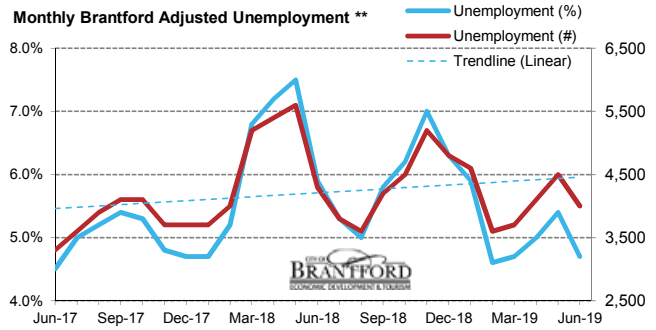
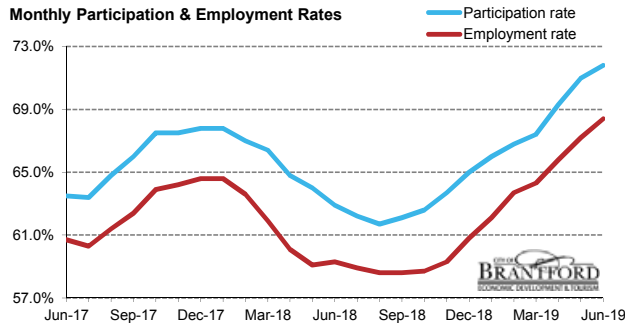
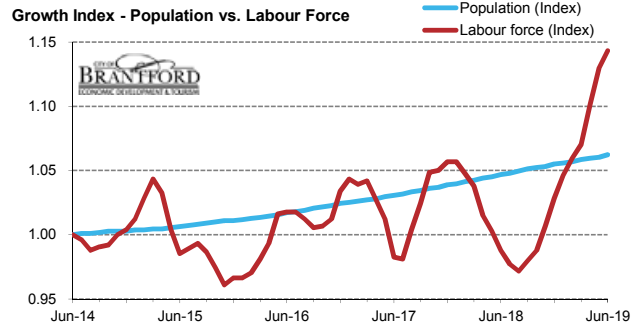
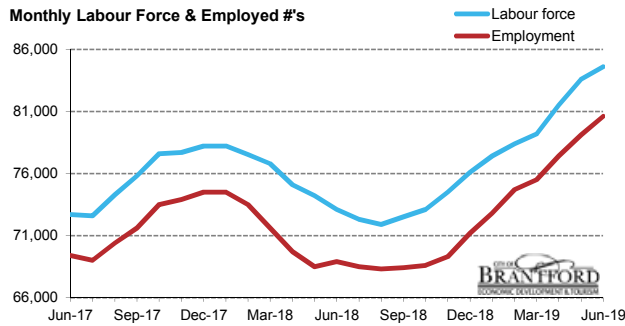




JUN 2019

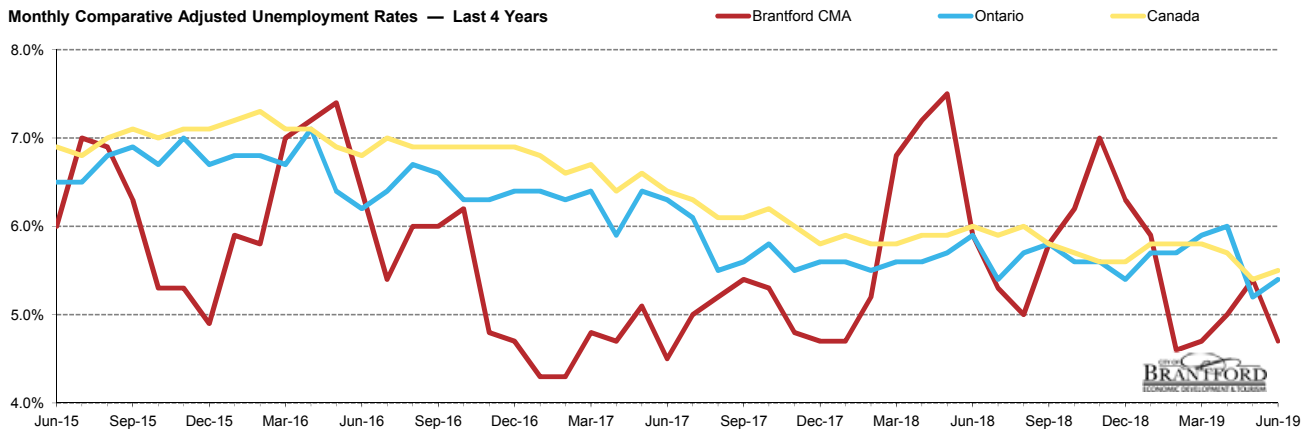
Local Labour Market Report*





Brantford CMA	Jun-18	Jul-18	Aug-18	Sep-18	Oct-18	Nov-18	Dec-18	Jan-19	Feb-19	Mar-19	Apr-19	May-19	Jun-19	M/M	Y/Y
Total Population	116,200	116,300	116,500	116,700	116,800	116,900	117,100	117,200	117,300	117,500	117,600	117,700	117,900	200	1,700
Labour Force	73,100	72,300	71,900	72,500	73,100	74,500	76,100	77,400	78,400	79,200	81,500	83,600	84,600	1,000	11,500
Employed	68,900	68,500	68,300	68,400	68,600	69,300	71,200	72,800	74,700	75,500	77,400	79,100	80,600	1,500	11,700
Unemployed	4,300	3,800	3,600	4,200	4,500	5,200	4,800	4,600	3,600	3,700	4,100	4,500	4,000	-500	-300
Unemploy't Rate	5.9%	5.3%	5.0%	5.8%	6.2%	7.0%	6.3%	5.9%	4.6%	4.7%	5.0%	5.4%	4.7%	-0.7	-1.2
Participat'n Rate	62.9%	62.2%	61.7%	62.1%	62.6%	63.7%	65.0%	66.0%	66.8%	67.4%	69.3%	71.0%	71.8%	0.8	8.9
Employ'm't Rate	59.3%	58.9%	58.6%	58.6%	58.7%	59.3%	60.8%	62.1%	63.7%	64.3%	65.8%	67.2%	68.4%	1.2	9.1

Monthly Comparative Adjusted Unemployment Rates — Last 4 Years



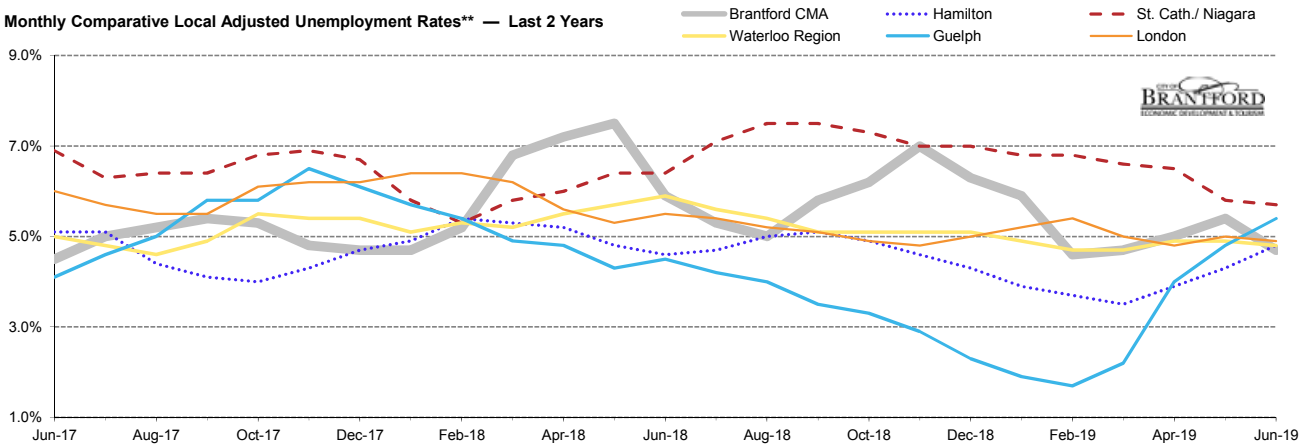
Unemployment %	Jun-18	Jul-18	Aug-18	Sep-18	Oct-18	Nov-18	Dec-18	Jan-19	Feb-19	Mar-19	Apr-19	May-19	Jun-19	M/M	Y/Y
Brantford CMA **	5.9%	5.3%	5.0%	5.8%	6.2%	7.0%	6.3%	5.9%	4.6%	4.7%	5.0%	5.4%	4.7%	-0.7	-1.2
Ontario	5.9%	5.4%	5.7%	5.8%	5.6%	5.6%	5.4%	5.7%	5.7%	5.9%	6.0%	5.2%	5.4%	0.2	-0.5
Canada	6.0%	5.9%	6.0%	5.8%	5.7%	5.6%	5.6%	5.8%	5.8%	5.8%	5.7%	5.4%	5.5%	0.1	-0.5

* Source: Stats Canada. Based on persons of working age, 15 years and over. Statistics Canada must be credited when data from this report is used.

** Monthly municipal rates are reported as 3 month moving averages. All others are reported monthly.

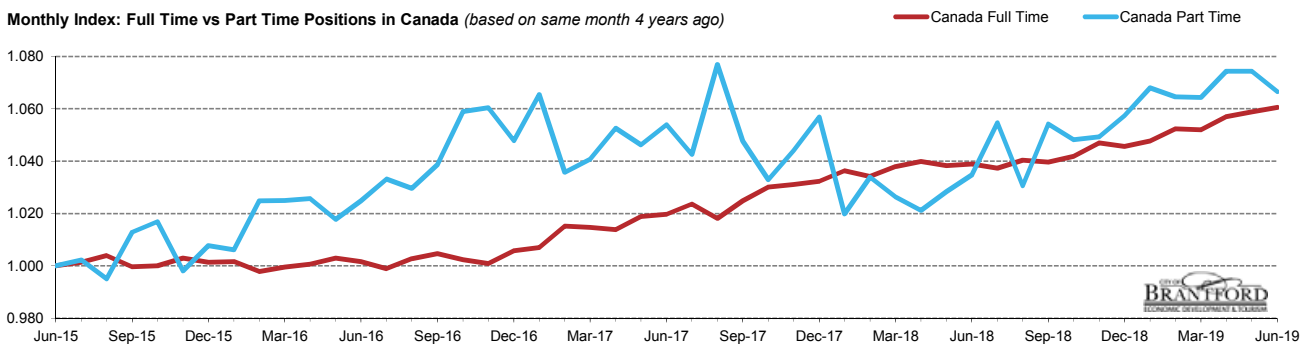
Data for the County of Brant is not reported separately by Stats Canada. Prepared by the City of Brantford's Economic Development Department. Available at advantagebrantford.ca

Monthly Comparative Local Adjusted Unemployment Rates** — Last 2 Years

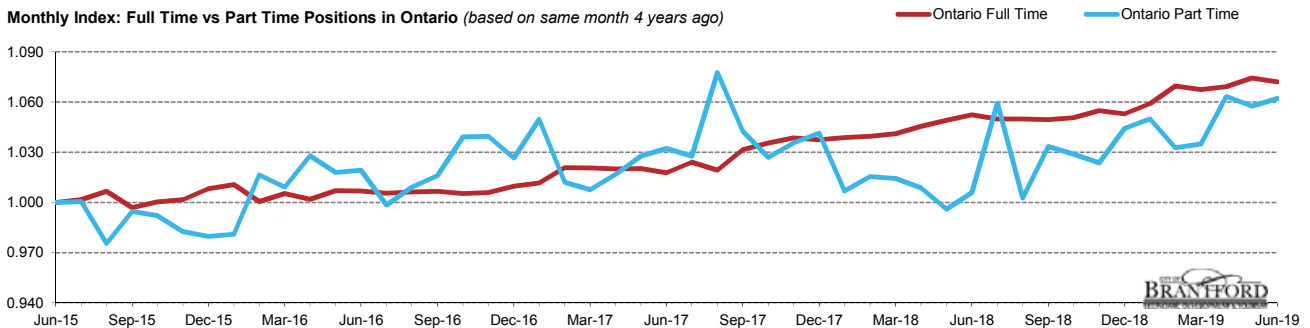


Unemployment %	Jun-18	Jul-18	Aug-18	Sep-18	Oct-18	Nov-18	Dec-18	Jan-19	Feb-19	Mar-19	Apr-19	May-19	Jun-19	M/M	Y/Y
Brantford CMA	5.9%	5.3%	5.0%	5.8%	6.2%	7.0%	6.3%	5.9%	4.6%	4.7%	5.0%	5.4%	4.7%	-0.7	-1.2
Hamilton	4.6%	4.7%	5.0%	5.1%	4.9%	4.6%	4.3%	3.9%	3.7%	3.5%	3.9%	4.3%	4.8%	0.5	0.2
St. Cath./Niagara	6.4%	7.1%	7.5%	7.5%	7.3%	7.0%	7.0%	6.8%	6.8%	6.6%	6.5%	5.8%	5.7%	-0.1	-0.7
Waterloo Region	5.9%	5.6%	5.4%	5.1%	5.1%	5.1%	5.1%	4.9%	4.7%	4.7%	4.9%	4.9%	4.8%	-0.1	-1.1
Guelph	4.5%	4.2%	4.0%	3.5%	3.3%	2.9%	2.3%	1.9%	1.7%	2.2%	4.0%	4.8%	5.4%	0.6	0.9
London	5.5%	5.4%	5.2%	5.1%	4.9%	4.8%	5.0%	5.2%	5.4%	5.0%	4.8%	5.0%	4.9%	-0.1	-0.6

Monthly Index: Full Time vs Part Time Positions in Canada (based on same month 4 years ago)



Monthly Index: Full Time vs Part Time Positions in Ontario (based on same month 4 years ago)

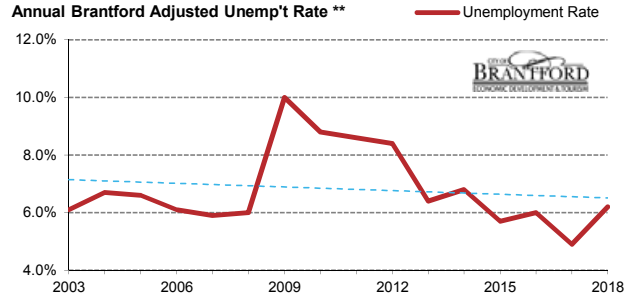
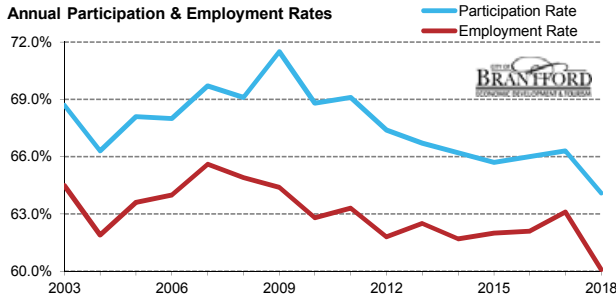
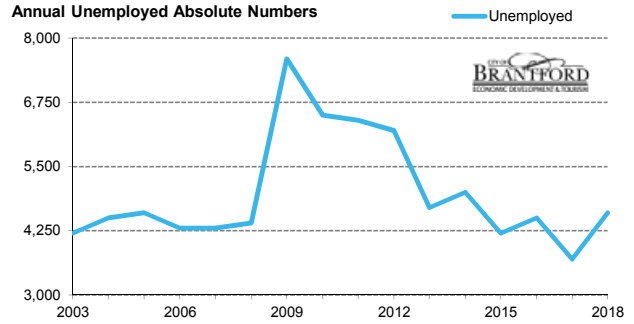
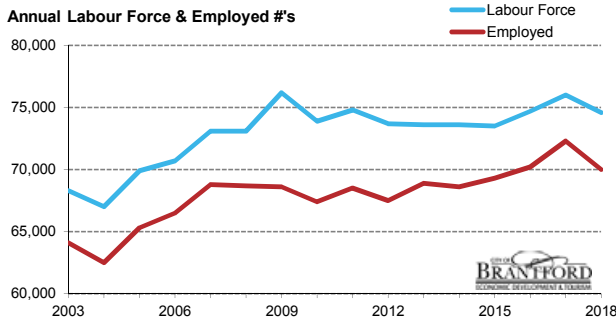


FT vs PT Positions	Jun-18	Jul-18	Aug-18	Sep-18	Oct-18	Nov-18	Dec-18	Jan-19	Feb-19	Mar-19	Apr-19	May-19	Jun-19	% M/M	% Y/Y
Canada FT (000's)	15,155.6	15,132.7	15,176.2	15,166.3	15,197.9	15,272.7	15,253.4	15,284.3	15,351.7	15,345.3	15,418.3	15,446.0	15,470.1	0.2	2.1
Canada PT (000's)	3,477.9	3,544.7	3,464.0	3,543.1	3,523.1	3,526.6	3,553.7	3,589.7	3,578.1	3,577.2	3,610.8	3,610.8	3,584.6	-0.7	3.1
Canada FT %	81.3%	81.0%	81.4%	81.1%	81.2%	81.2%	81.1%	81.0%	81.1%	81.1%	81.0%	81.1%	81.2%		
Canada PT %	18.7%	19.0%	18.6%	18.9%	18.8%	18.8%	18.9%	19.0%	18.9%	18.9%	19.0%	18.9%	18.8%		
Ontario FT (000's)	5,933.1	5,918.7	5,918.8	5,916.8	5,923.7	5,947.5	5,936.7	5,970.7	6,029.9	6,018.3	6,028.4	6,056.8	6,043.9	-0.2	1.9
Ontario PT (000's)	1,313.7	1,383.8	1,309.6	1,349.7	1,343.8	1,337.0	1,363.9	1,371.2	1,348.9	1,351.7	1,388.7	1,381.2	1,387.2	0.4	5.6
Ontario FT %	81.9%	81.1%	81.9%	81.4%	81.5%	81.6%	81.3%	81.3%	81.7%	81.7%	81.3%	81.4%	81.3%		
Ontario PT %	18.1%	18.9%	18.1%	18.6%	18.5%	18.4%	18.7%	18.7%	18.3%	18.3%	18.7%	18.6%	18.7%		

* Source: Stats Canada. Based on persons of working age, 15 years and over. Statistics Canada must be credited when data from this report is used.

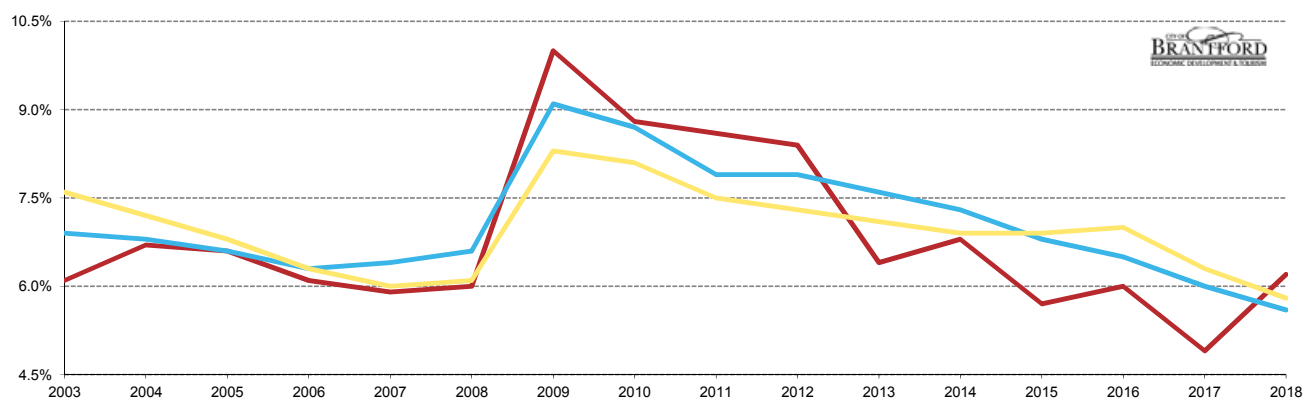
** Monthly municipal rates are reported as 3 month moving averages. All others are reported monthly.

Data for the County of Brant is not reported separately by Stats Canada. Prepared by the City of Brantford's Economic Development Department. Available at advantagebrantford.ca



Brantford CMA	2006	2007	2008	2009	2010	2011	2012	2013	2014	2015	2016	2017	2018	Y/Y	10 Y/Y
Total Population	103,900	104,900	105,800	106,500	107,400	108,300	109,300	110,300	111,100	111,800	113,100	114,600	116,400	1,800	10,600
Labour Force	70,700	73,100	73,100	76,200	73,900	74,800	73,700	73,600	73,600	73,500	74,700	76,000	74,600	-1,400	1,500
Employed	66,500	68,800	68,700	68,600	67,400	68,500	67,500	68,900	68,600	69,300	70,200	72,300	70,000	-2,300	1,300
Unemployed	4,300	4,300	4,400	7,600	6,500	6,400	6,200	4,700	5,000	4,200	4,500	3,700	4,600	900	200
Unemploy't Rate	6.1%	5.9%	6.0%	10.0%	8.8%	8.6%	8.4%	6.4%	6.8%	5.7%	6.0%	4.9%	6.2%	1.3	0.2
Participat'n Rate	68.0%	69.7%	69.1%	71.5%	68.8%	69.1%	67.4%	66.7%	66.2%	65.7%	66.0%	66.3%	64.1%	-2.2	-5.0
Employ'm't Rate	64.0%	65.6%	64.9%	64.4%	62.8%	63.3%	61.8%	62.5%	61.7%	62.0%	62.1%	63.1%	60.1%	-3.0	-4.8

Annual Comparative Adjusted Unemployment Rates — Last 15 Years



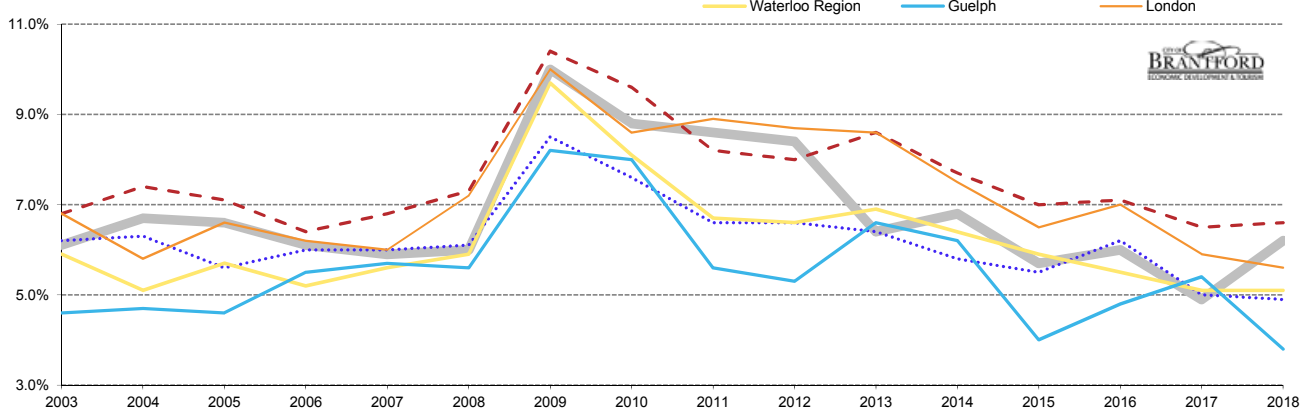
Unemployment %	2006	2007	2008	2009	2010	2011	2012	2013	2014	2015	2016	2017	2018	Y/Y	10 Y/Y
Brantford CMA **	6.1%	5.9%	6.0%	10.0%	8.8%	8.6%	8.4%	6.4%	6.8%	5.7%	6.0%	4.9%	6.2%	1.3	0.2
Ontario	6.3%	6.4%	6.6%	9.1%	8.7%	7.9%	7.9%	7.6%	7.3%	6.8%	6.5%	6.0%	5.6%	-0.4	-1.0
Canada	6.3%	6.0%	6.1%	8.3%	8.1%	7.5%	7.3%	7.1%	6.9%	6.9%	7.0%	6.3%	5.8%	-0.5	-0.3

* Source: Stats Canada. Based on persons of working age, 15 years and over. Statistics Canada must be credited when data from this report is used.

** Monthly municipal rates are reported as 3 month moving averages. All others are reported monthly.

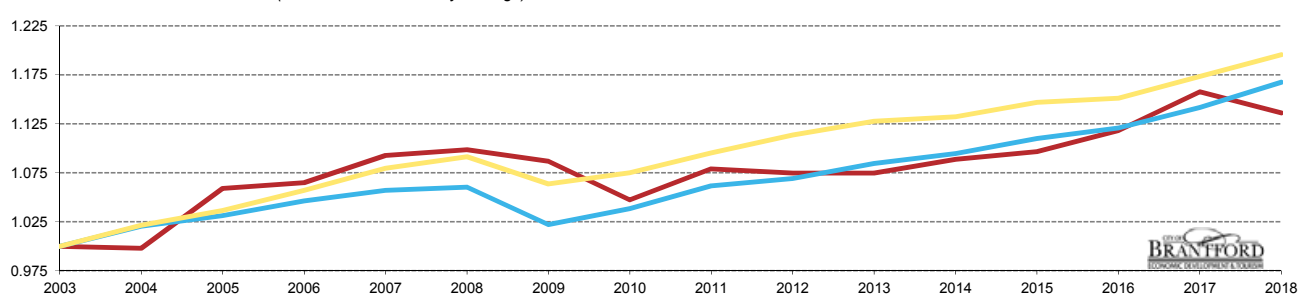
Data for the County of Brant is not reported separately by Stats Canada. Prepared by the City of Brantford's Economic Development Department. Available at advantagebrantford.ca

Annual Comparative CMA Adjusted Unemployment Rates** — Last 15 Years

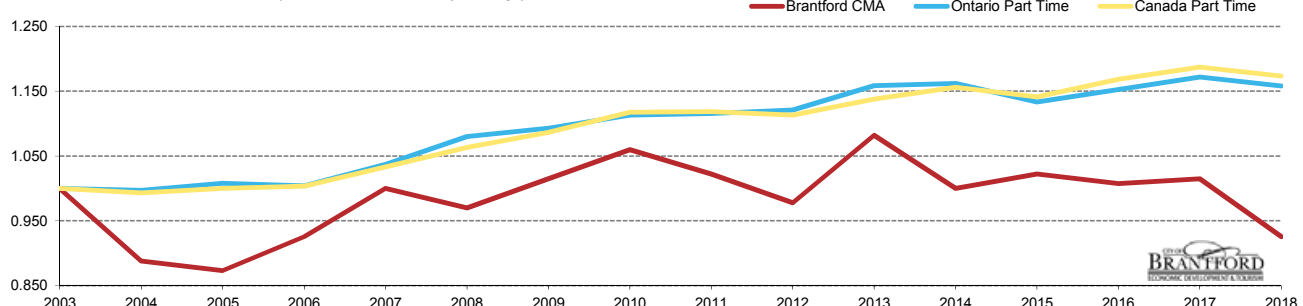


Unemployment %	2006	2007	2008	2009	2010	2011	2012	2013	2014	2015	2016	2017	2018	Y/Y	10 Y/Y
Brantford CMA	6.1%	5.9%	6.0%	10.0%	8.8%	8.6%	8.4%	6.4%	6.8%	5.7%	6.0%	4.9%	6.2%	1.3	0.2
Hamilton	6.0%	6.0%	6.1%	8.5%	7.6%	6.6%	6.6%	6.4%	5.8%	5.5%	6.2%	5.0%	4.9%	-0.1	-1.2
St. Cath./ Niagara	6.4%	6.8%	7.3%	10.4%	9.6%	8.2%	8.0%	8.6%	7.7%	7.0%	7.1%	6.5%	6.6%	0.1	-0.7
Waterloo Region	5.2%	5.6%	5.9%	9.7%	8.1%	6.7%	6.6%	6.9%	6.4%	5.9%	5.5%	5.1%	5.1%	0.0	-0.8
Guelph	5.5%	5.7%	5.6%	8.2%	8.0%	5.6%	5.3%	6.6%	6.2%	4.0%	4.8%	5.4%	3.8%	-1.6	-1.8
London	6.2%	6.0%	7.2%	10.0%	8.6%	8.9%	8.7%	8.6%	7.5%	6.5%	7.0%	5.9%	5.6%	-0.3	-1.6

Annual Index: Full Time Positions (based number from 15 years ago)



Annual Index: Part Time Positions (based number from 15 years ago)

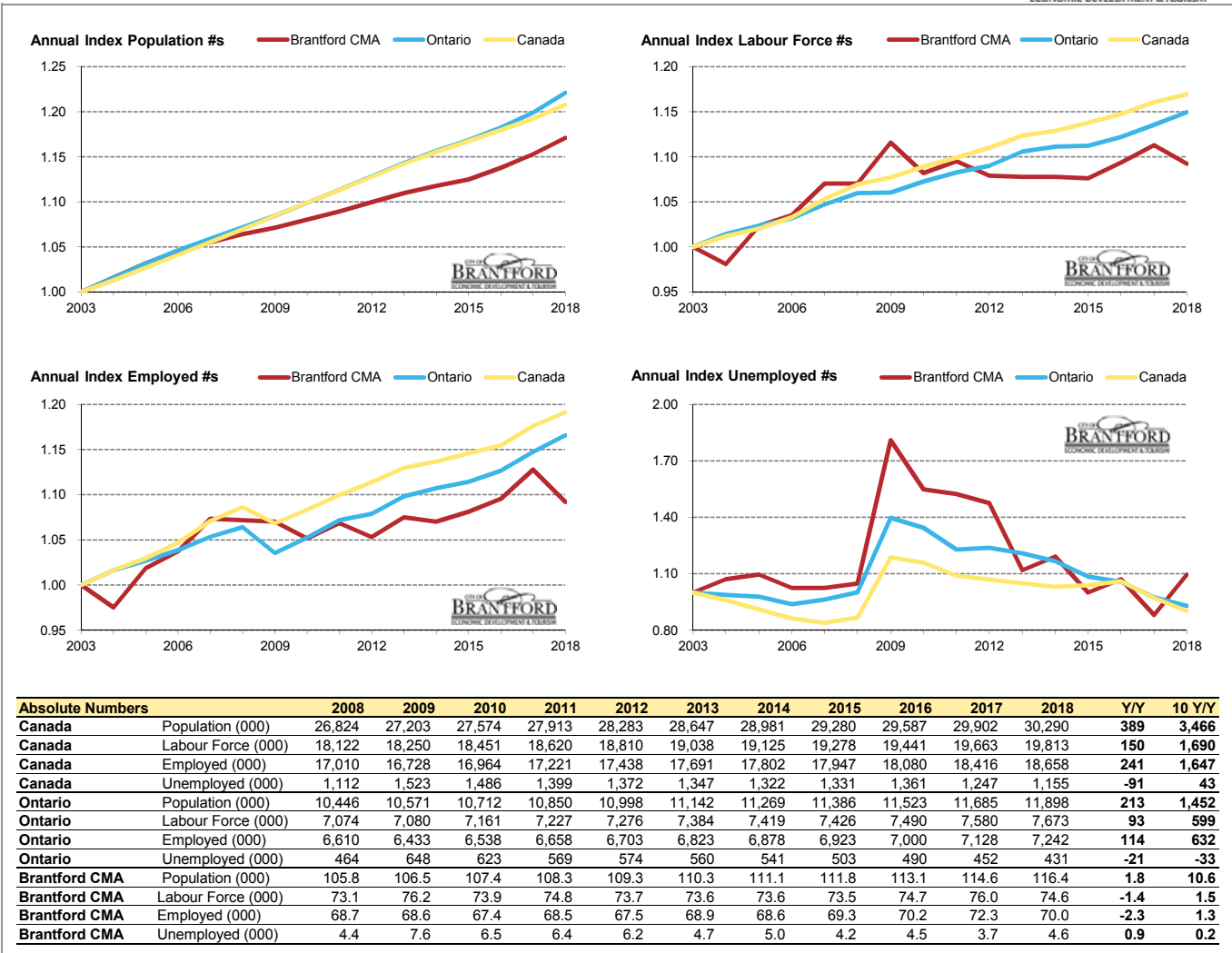


FT vs PT Positions	2006	2007	2008	2009	2010	2011	2012	2013	2014	2015	2016	2017	2018	Y/Y %	10 Y/Y %
Canada FT (000)	13,416.8	13,702.1	13,854.7	13,502.6	13,647.2	13,900.9	14,133.2	14,314.2	14,369.9	14,559.3	14,612.2	14,892.8	15,174.8	1.9	9.5
Canada PT (000)	2,979.2	3,067.2	3,155.5	3,225.0	3,317.1	3,320.2	3,304.7	3,376.9	3,432.3	3,387.3	3,467.7	3,523.6	3,482.7	-1.2	10.4
Canada FT %	81.8%	81.7%	81.4%	80.7%	80.4%	80.7%	81.0%	80.9%	80.7%	81.1%	80.8%	80.9%	81.3%		
Canada PT %	18.2%	18.3%	18.6%	19.3%	19.6%	19.3%	19.0%	19.1%	19.3%	18.9%	19.2%	19.1%	18.7%		
Ontario FT (000)	5,296.2	5,351.1	5,366.8	5,174.0	5,256.1	5,373.5	5,412.0	5,489.5	5,540.0	5,618.2	5,672.6	5,778.7	5,909.0	2.3	10.1
Ontario PT (000)	1,156.1	1,194.4	1,243.5	1,258.7	1,281.8	1,284.8	1,290.6	1,334.0	1,337.9	1,305.0	1,327.0	1,349.3	1,333.4	-1.2	7.2
Ontario FT %	82.1%	81.8%	81.2%	80.4%	80.4%	80.7%	80.7%	80.4%	80.5%	81.2%	81.0%	81.1%	81.6%		
Ontario PT %	17.9%	18.2%	18.8%	19.6%	19.6%	19.3%	19.3%	19.6%	19.5%	18.8%	19.0%	18.9%	18.4%		
Brantford FT (000)	54.0	55.4	55.7	55.1	53.1	54.7	54.5	54.5	55.2	55.6	56.7	58.7	57.6	-1.9	3.4
Brantford PT (000)	12.4	13.4	13.0	13.6	14.2	13.7	13.1	14.5	13.4	13.7	13.5	13.6	12.4	-8.8	-4.6
Brantford FT %	81.3%	80.5%	81.1%	80.2%	78.9%	80.0%	80.6%	79.0%	80.5%	80.2%	80.8%	81.2%	82.3%		
Brantford PT %	18.7%	19.5%	18.9%	19.8%	21.1%	20.0%	19.4%	21.0%	19.5%	19.8%	19.2%	18.8%	17.7%		

* Source: Stats Canada. Based on persons of working age, 15 years and over. Statistics Canada must be credited when data from this report is used.

** Monthly municipal rates are reported as 3 month moving averages. All others are reported monthly.

Data for the County of Brant is not reported separately by Stats Canada. Prepared by the City of Brantford's Economic Development Department. Available at advantagebrantford.ca



* Source: Stats Canada. Based on persons of working age, 15 years and over. Statistics Canada must be credited when data from this report is used.

** Monthly municipal rates are reported as 3 month moving averages. All others are reported monthly.

Data for the County of Brant is not reported separately by Stats Canada. Prepared by the City of Brantford's Economic Development Department. Available at advantagebrantford.ca