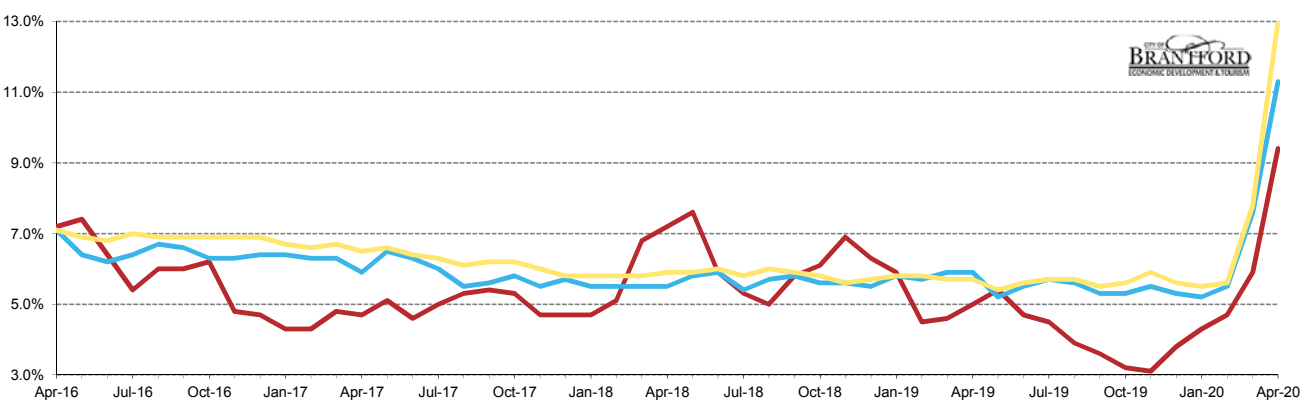


Brantford CMA	Apr-19	May-19	Jun-19	Jul-19	Aug-19	Sep-19	Oct-19	Nov-19	Dec-19	Jan-20	Feb-20	Mar-20	Apr-20	M/M	Y/Y
Total Population	117,600	117,700	117,900	118,100	118,200	118,400	118,600	118,800	118,900	119,000	119,100	119,200	119,400	200	1,800
Labour Force	82,100	84,100	84,900	85,100	84,500	83,200	81,600	81,000	80,600	79,900	78,400	77,600	77,300	-300	-4,800
Employed	78,100	79,600	80,800	81,300	81,100	80,200	79,000	78,400	77,500	76,500	74,700	73,000	70,000	-3,000	-8,100
Unemployed	4,100	4,500	4,000	3,800	3,300	3,000	2,600	2,500	3,100	3,400	3,700	4,600	7,300	2,700	3,200
Unemploy't Rate	5.0%	5.4%	4.7%	4.5%	3.9%	3.6%	3.2%	3.1%	3.8%	4.3%	4.7%	5.9%	9.4%	3.5	4.4
Participat'n Rate	69.8%	71.5%	72.0%	72.1%	71.5%	70.3%	68.8%	68.2%	67.8%	67.1%	65.8%	65.1%	64.7%	-0.4	-5.1
Employ'm't Rate	66.4%	67.6%	68.5%	68.8%	68.6%	67.7%	66.6%	66.0%	65.2%	64.3%	62.7%	61.2%	58.6%	-2.6	-7.8

Monthly Comparative Adjusted Unemployment Rates — Last 4 Years



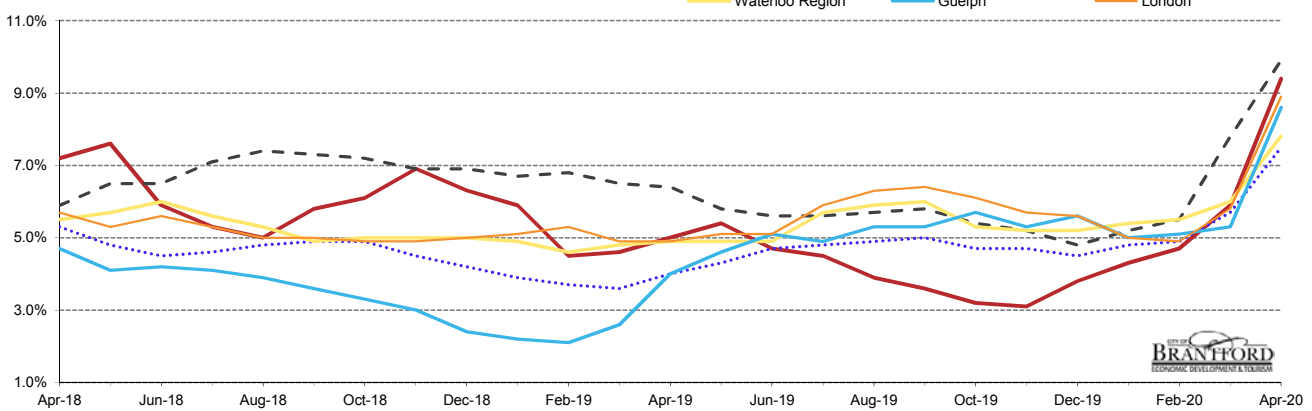
Unemployment %	Apr-19	May-19	Jun-19	Jul-19	Aug-19	Sep-19	Oct-19	Nov-19	Dec-19	Jan-20	Feb-20	Mar-20	Apr-20	M/M	Y/Y
Brantford CMA **	5.0%	5.4%	4.7%	4.5%	3.9%	3.6%	3.2%	3.1%	3.8%	4.3%	4.7%	5.9%	9.4%	3.5	4.4
Ontario	5.9%	5.2%	5.5%	5.7%	5.6%	5.3%	5.3%	5.5%	5.3%	5.2%	5.5%	7.6%	11.3%	3.7	5.4
Canada	5.7%	5.4%	5.6%	5.7%	5.7%	5.3%	5.6%	5.9%	5.6%	5.5%	5.6%	7.3%	13.0%	5.2	7.3

* Source: Stats Canada. Based on persons of working age, 15 years and over. Statistics Canada must be credited when data from this report is used.

** Monthly municipal rates are reported as 3 month moving averages. All others are reported monthly.

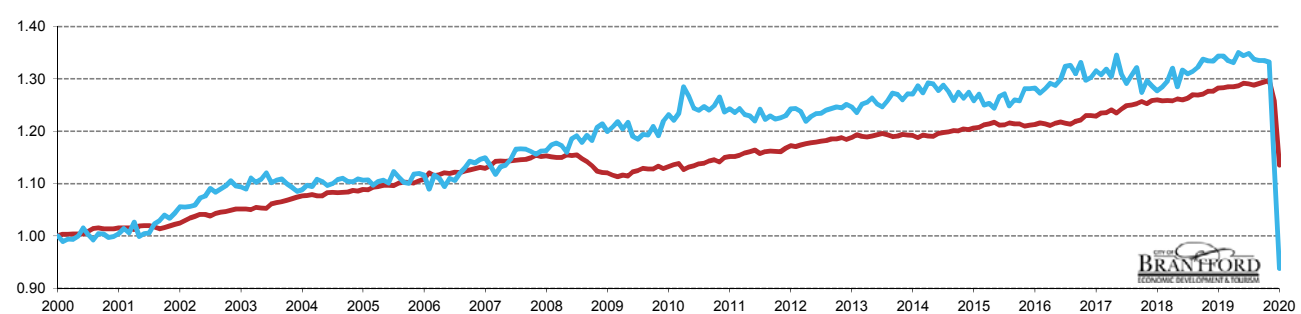
Data for the County of Brant is not reported separately by Stats Canada. Prepared by the City of Brantford's Economic Development Department. Available at advantagebrantford.ca

Monthly Comparative Local Adjusted Unemployment Rates** — Last 2 Years

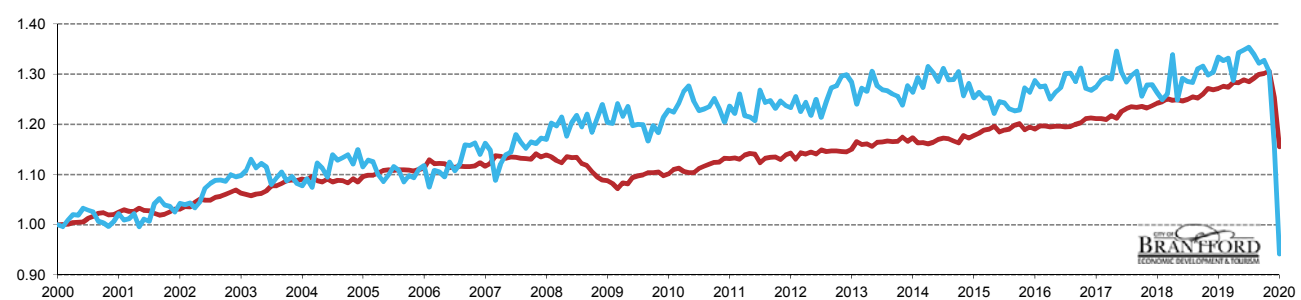


Unemployment %	Apr-19	May-19	Jun-19	Jul-19	Aug-19	Sep-19	Oct-19	Nov-19	Dec-19	Jan-20	Feb-20	Mar-20	Apr-20	M/M	Y/Y
Brantford CMA	5.0%	5.4%	4.7%	4.5%	3.9%	3.6%	3.2%	3.1%	3.8%	4.3%	4.7%	5.9%	9.4%	3.5	4.4
Hamilton	4.0%	4.3%	4.7%	4.8%	4.9%	5.0%	4.7%	4.7%	4.5%	4.8%	4.9%	5.7%	7.5%	1.8	3.5
St. Cath./Niagara	6.4%	5.8%	5.6%	5.6%	5.7%	5.8%	5.4%	5.2%	4.8%	5.2%	5.5%	7.8%	9.9%	2.1	3.5
Waterloo Region	4.9%	4.9%	4.9%	5.7%	5.9%	6.0%	5.3%	5.2%	5.2%	5.4%	5.5%	6.0%	7.8%	1.8	2.9
Guelph	4.0%	4.6%	5.1%	4.9%	5.3%	5.3%	5.7%	5.3%	5.6%	5.0%	5.1%	5.3%	8.6%	3.3	4.6
London	4.9%	5.1%	5.1%	5.9%	6.3%	6.4%	6.1%	5.7%	5.6%	5.0%	4.9%	5.8%	8.9%	3.1	4.0

Monthly Index: Full Time vs Part Time Positions in Canada (based on same month 4 years ago)



Monthly Index: Full Time vs Part Time Positions in Ontario (based on same month 4 years ago)

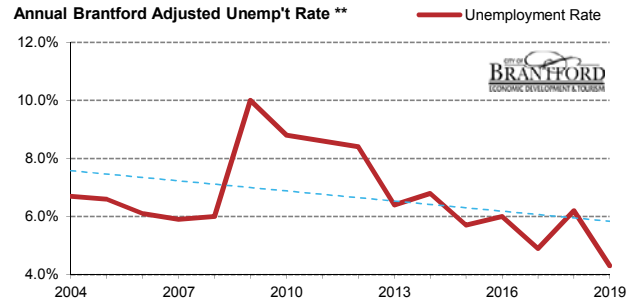
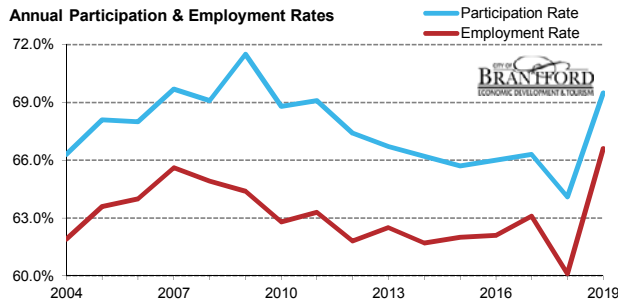
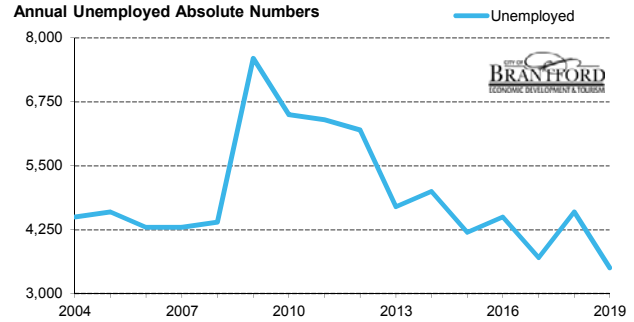
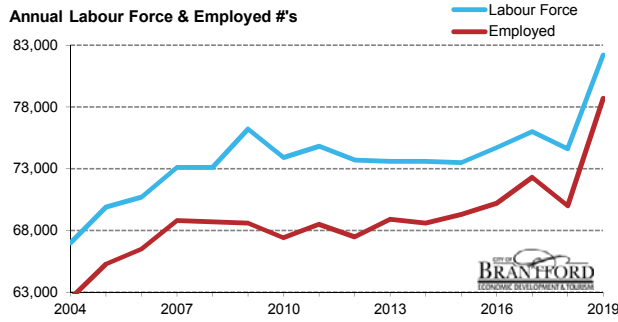


FT vs PT Positions	Apr-19	May-19	Jun-19	Jul-19	Aug-19	Sep-19	Oct-19	Nov-19	Dec-19	Jan-20	Feb-20	Mar-20	Apr-20	% M/M	% Y/Y
Canada FT (000's)	12,959.4	12,959.4	12,959.4	12,959.4	12,959.4	12,959.4	12,959.4	12,959.4	12,959.4	12,959.4	12,959.4	12,959.4	12,959.4	0.0	0.0
Canada PT (000's)	2,925.8	2,925.8	2,925.8	2,925.8	2,925.8	2,925.8	2,925.8	2,925.8	2,925.8	2,925.8	2,925.8	2,925.8	2,925.8	0.0	0.0
Canada FT %	81.6%	81.6%	81.6%	81.6%	81.6%	81.6%	81.6%	81.6%	81.6%	81.6%	81.6%	81.6%	81.6%		
Canada PT %	18.4%	18.4%	18.4%	18.4%	18.4%	18.4%	18.4%	18.4%	18.4%	18.4%	18.4%	18.4%	18.4%		
Ontario FT (000's)	5,176.7	5,176.7	5,176.7	5,176.7	5,176.7	5,176.7	5,176.7	5,176.7	5,176.7	5,176.7	5,176.7	5,176.7	5,176.7	0.0	0.0
Ontario PT (000's)	1,123.5	1,123.5	1,123.5	1,123.5	1,123.5	1,123.5	1,123.5	1,123.5	1,123.5	1,123.5	1,123.5	1,123.5	1,123.5	0.0	0.0
Ontario FT %	82.2%	82.2%	82.2%	82.2%	82.2%	82.2%	82.2%	82.2%	82.2%	82.2%	82.2%	82.2%	82.2%		
Ontario PT %	17.8%	17.8%	17.8%	17.8%	17.8%	17.8%	17.8%	17.8%	17.8%	17.8%	17.8%	17.8%	17.8%		

* Source: Stats Canada. Based on persons of working age, 15 years and over. Statistics Canada must be credited when data from this report is used.

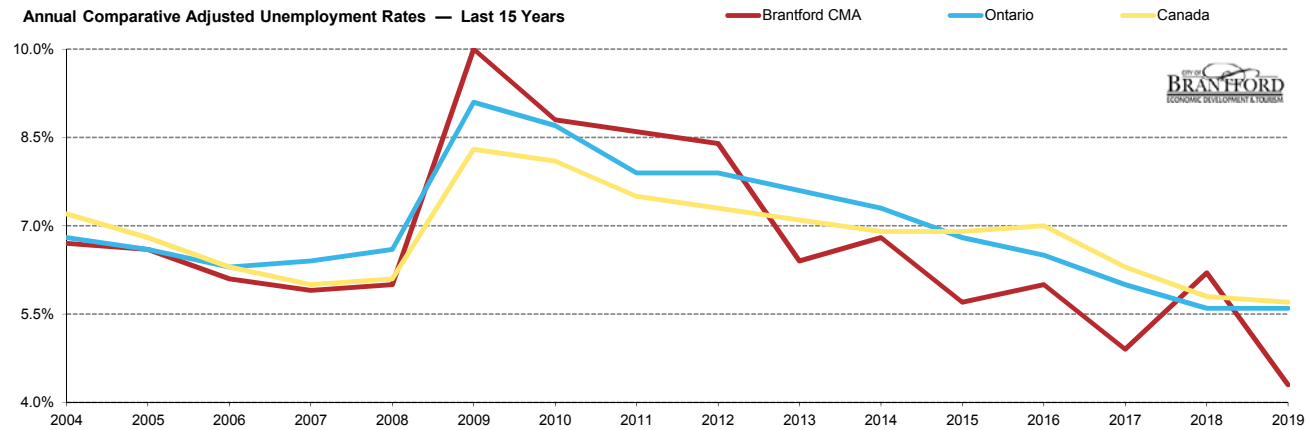
** Monthly municipal rates are reported as 3 month moving averages. All others are reported monthly.

Data for the County of Brant is not reported separately by Stats Canada. Prepared by the City of Brantford's Economic Development Department. Available at advantagebrantford.ca



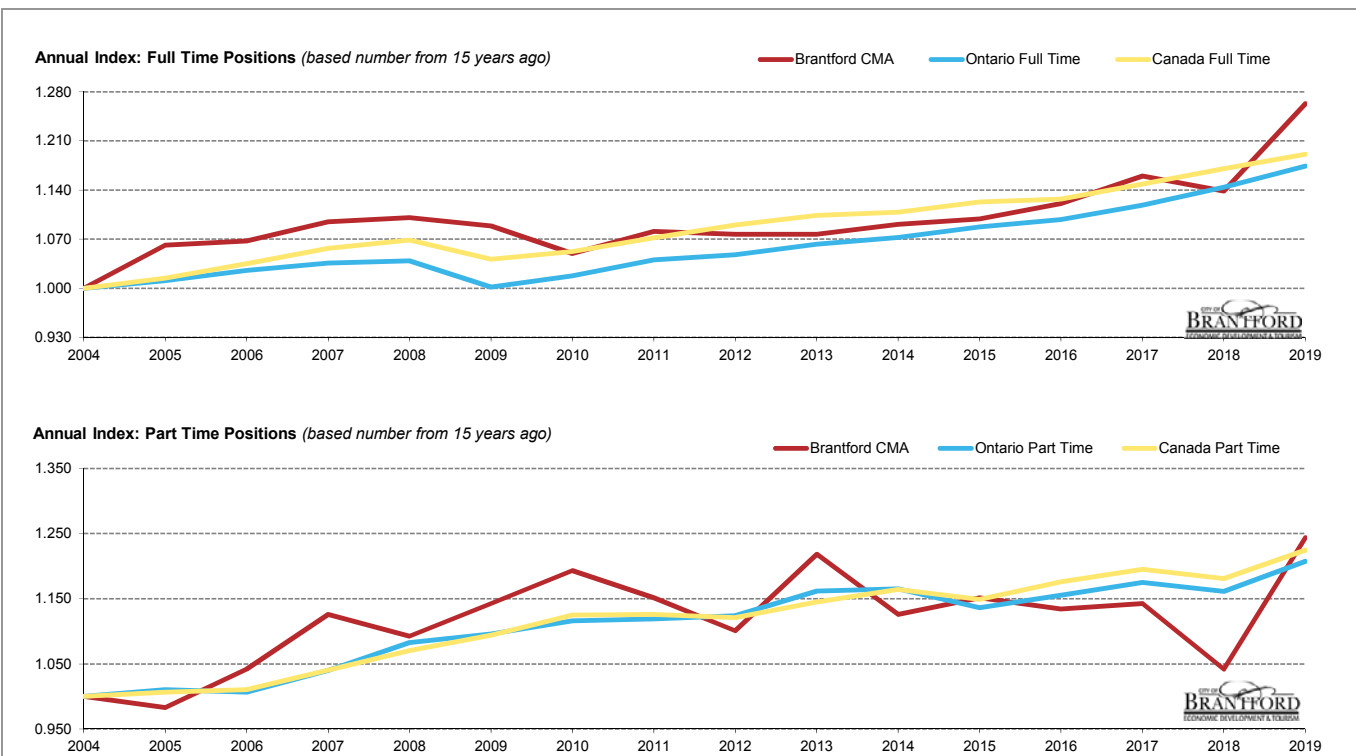
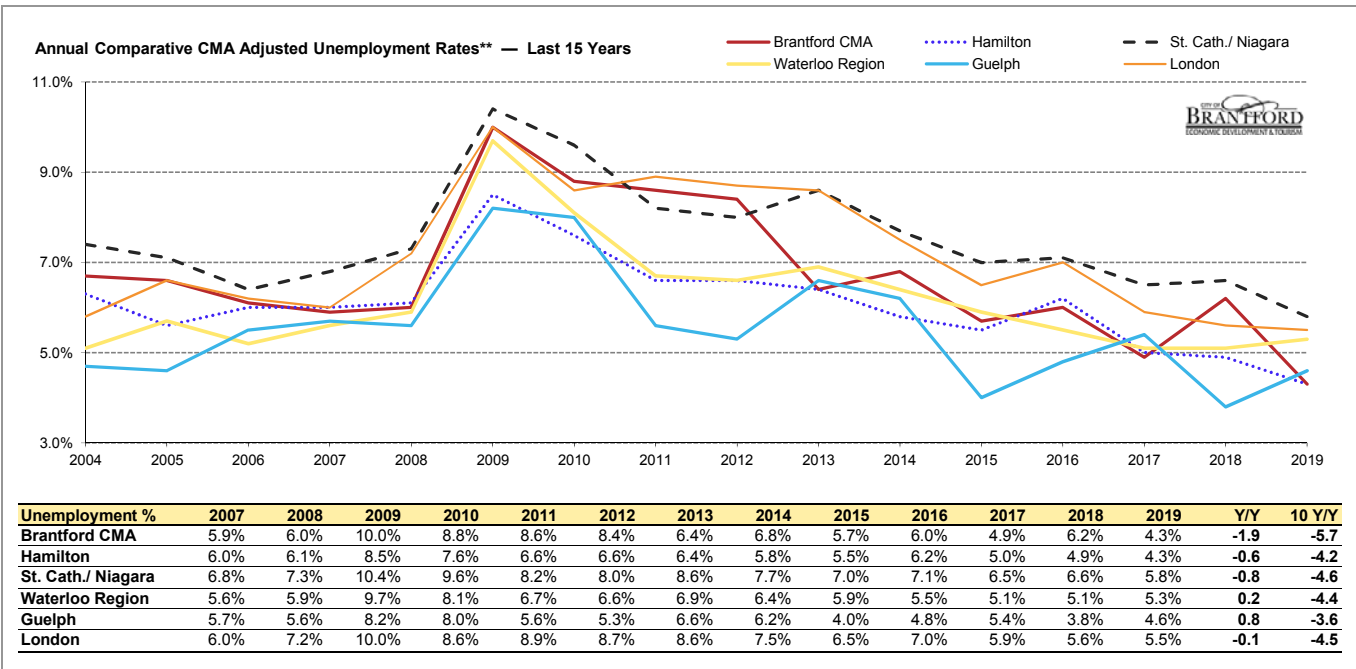
Brantford CMA	2007	2008	2009	2010	2011	2012	2013	2014	2015	2016	2017	2018	2019	Y/Y	10 Y/Y
Total Population	104,900	105,800	106,500	107,400	108,300	109,300	110,300	111,100	111,800	113,100	114,600	116,400	118,200	1,800	11,700
Labour Force	73,100	73,100	76,200	73,900	74,800	73,700	73,600	73,600	73,500	74,700	76,000	74,600	82,200	7,600	6,000
Employed	68,800	68,700	68,600	67,400	68,500	67,500	68,900	68,600	69,300	70,200	72,300	70,000	78,700	8,700	10,100
Unemployed	4,300	4,400	7,600	6,500	6,400	6,200	4,700	5,000	4,200	4,500	3,700	4,600	3,500	-1,100	-4,100
Unemploy'm't Rate	5.9%	6.0%	10.0%	8.8%	8.6%	8.4%	6.4%	6.8%	5.7%	6.0%	4.9%	6.2%	4.3%	-1.9	-5.7
Participat'n Rate	69.7%	69.1%	71.5%	68.8%	69.1%	67.4%	66.7%	66.2%	65.7%	66.0%	66.3%	64.1%	69.5%	5.4	-2.0
Employm't Rate	65.6%	64.9%	64.4%	62.8%	63.3%	61.8%	62.5%	61.7%	62.0%	62.1%	63.1%	60.1%	66.6%	6.5	2.2

Annual Comparative Adjusted Unemployment Rates — Last 15 Years



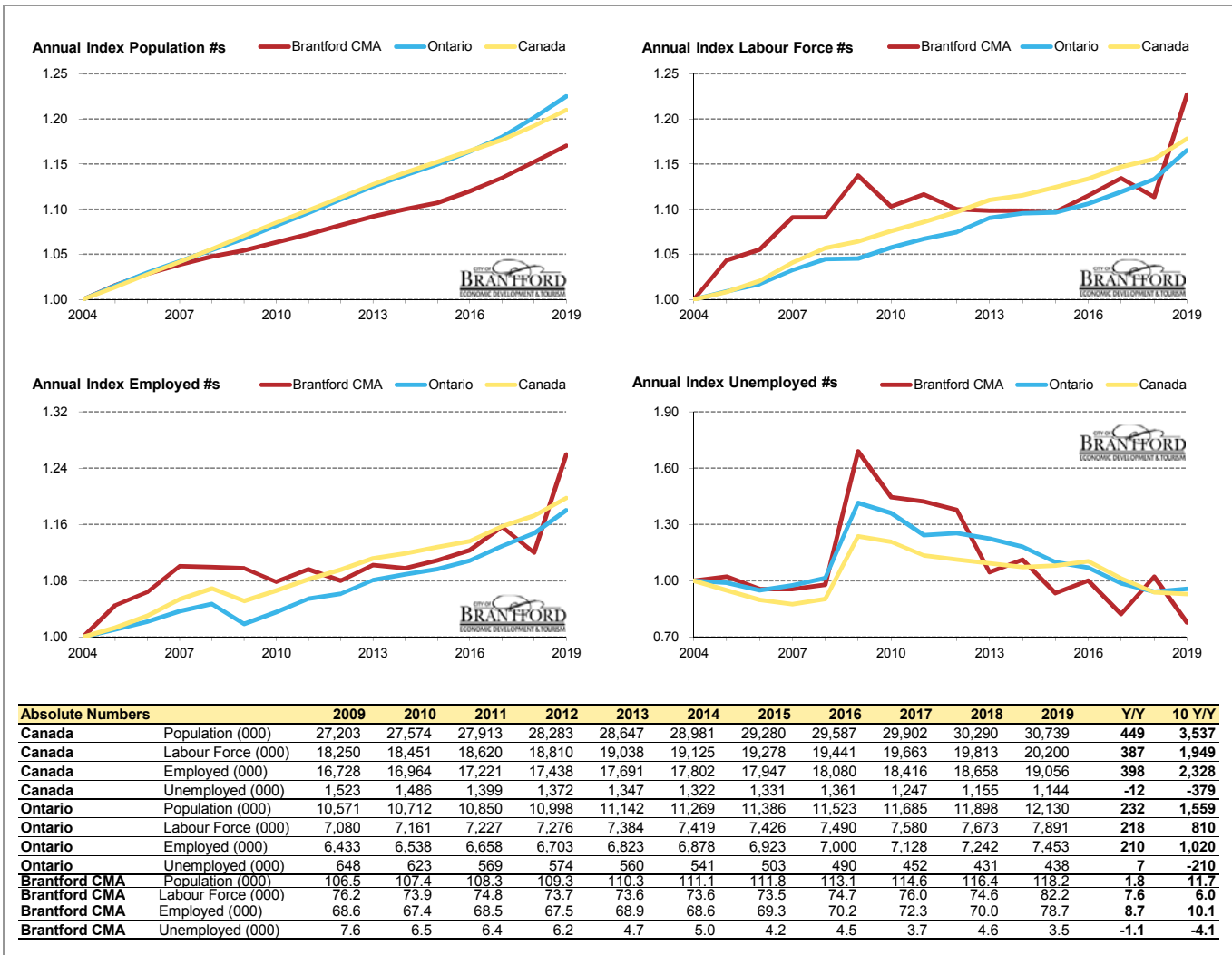
Unemployment %	2007	2008	2009	2010	2011	2012	2013	2014	2015	2016	2017	2018	2019	Y/Y	10 Y/Y
Brantford CMA **	5.9%	6.0%	10.0%	8.8%	8.6%	8.4%	6.4%	6.8%	5.7%	6.0%	4.9%	6.2%	4.3%	-1.9	-5.7
Ontario	6.4%	6.6%	9.1%	8.7%	7.9%	7.9%	7.0%	7.3%	6.8%	6.5%	6.0%	5.8%	5.6%	0.0	-3.5
Canada	6.0%	6.1%	6.3%	6.1%	7.9%	7.3%	7.1%	6.9%	6.9%	7.0%	6.3%	5.8%	5.7%	-0.1	-2.6

* Source: Stats Canada. Based on persons of working age, 15 years and over. Statistics Canada must be credited when data from this report is used.
 ** Monthly municipal rates are reported as 3 month moving averages. All others are reported monthly.
 Data for the County of Brant is not reported separately by Stats Canada. Prepared by the City of Brantford's Economic Development Department. Available at advantagebrantford.ca



FT vs PT Positions	2007	2008	2009	2010	2011	2012	2013	2014	2015	2016	2017	2018	2019	Y/Y %	10 Y/Y %
Canada FT (000)	13,702.1	13,854.7	13,502.6	13,647.2	13,900.9	14,133.2	14,314.2	14,369.9	14,559.3	14,612.2	14,892.8	15,174.8	15,445.1	1.8	14.4
Canada PT (000)	3,067.2	3,155.5	3,225.0	3,317.1	3,320.2	3,304.7	3,376.9	3,432.3	3,387.3	3,467.7	3,523.6	3,482.7	3,610.6	3.7	12.0
Canada FT %	81.7%	81.4%	80.7%	80.4%	80.7%	81.0%	80.9%	80.7%	81.1%	80.8%	80.9%	81.3%	81.1%		
Canada PT %	18.3%	18.6%	19.3%	19.6%	19.3%	19.0%	19.1%	19.3%	18.9%	19.2%	19.1%	18.7%	18.9%		
Ontario FT (000)	5,351.1	5,366.8	5,174.0	5,256.1	5,373.5	5,412.0	5,489.5	5,540.0	5,618.2	5,672.6	5,778.7	5,909.0	6,065.8	2.7	17.2
Ontario PT (000)	1,194.4	1,243.5	1,258.7	1,281.8	1,284.8	1,290.6	1,334.0	1,337.9	1,305.0	1,327.0	1,349.3	1,333.4	1,386.8	4.0	10.2
Ontario FT %	81.8%	81.2%	80.4%	80.4%	80.7%	80.7%	80.4%	80.5%	81.2%	81.0%	81.1%	81.6%	81.4%		
Ontario PT %	18.2%	18.8%	19.6%	19.6%	19.3%	19.3%	19.6%	19.5%	18.8%	19.0%	18.9%	18.4%	18.6%		
Brantford FT (000)	55.4	55.7	55.1	53.1	54.7	54.5	54.5	55.2	55.6	56.7	58.7	57.6	63.9	10.9	16.0
Brantford PT (000)	13.4	13.0	13.6	14.2	13.7	13.1	14.5	13.4	13.7	13.5	13.6	12.4	14.8	19.4	8.8
Brantford FT %	80.5%	81.1%	80.2%	78.9%	80.0%	80.6%	79.0%	80.5%	80.2%	80.8%	81.2%	82.3%	81.2%		
Brantford PT %	19.5%	18.9%	19.8%	21.1%	20.0%	19.4%	21.0%	19.5%	19.8%	19.2%	18.8%	17.7%	18.8%		

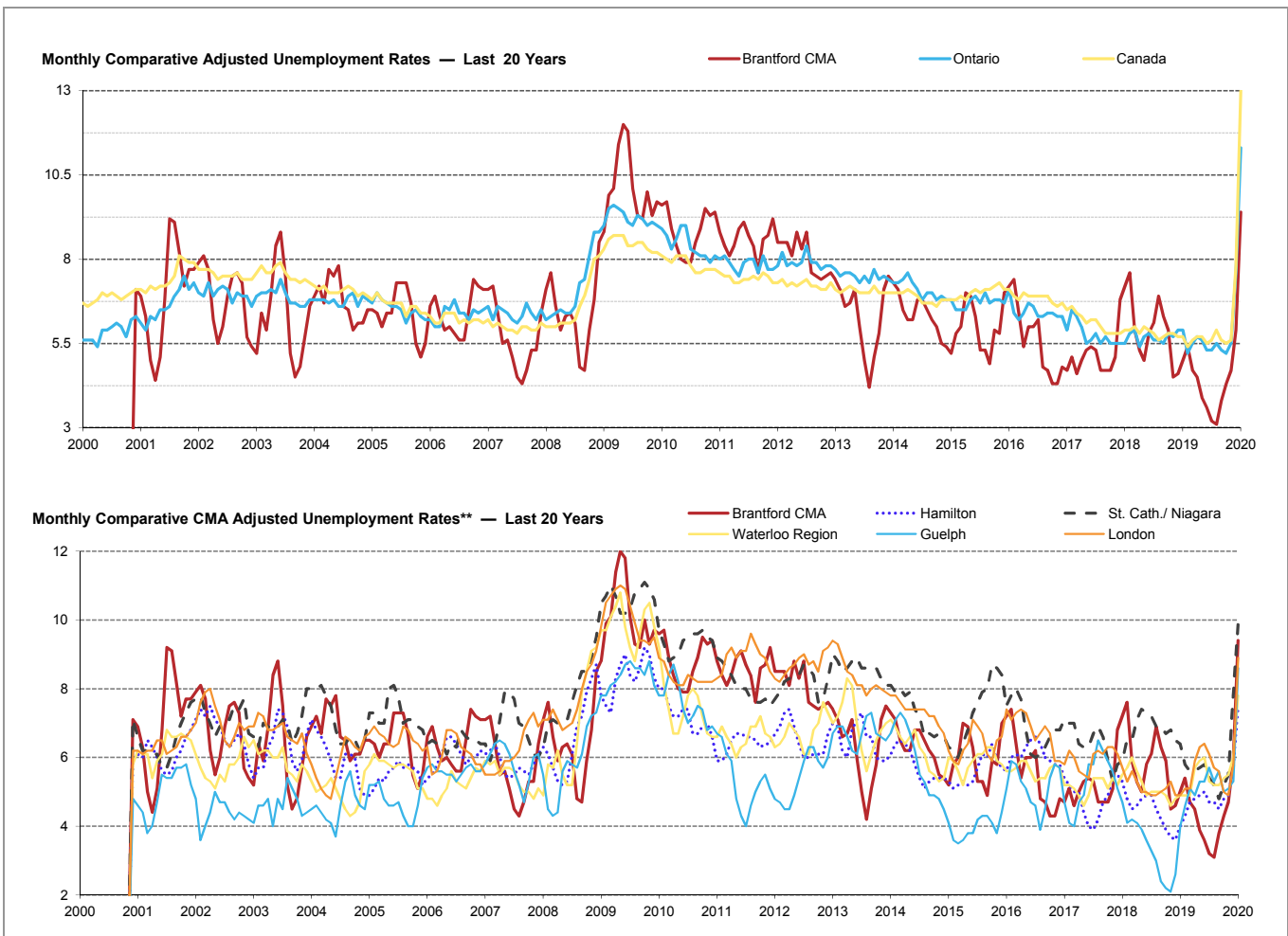
* Source: Stats Canada. Based on persons of working age, 15 years and over. Statistics Canada must be credited when data from this report is used.
 ** Monthly municipal rates are reported as 3 month moving averages. All others are reported monthly.
 Data for the County of Brant is not reported separately by Stats Canada. Prepared by the City of Brantford's Economic Development Department. Available at advantagebrantford.ca



* Source: Stats Canada. Based on persons of working age, 15 years and over. Statistics Canada must be credited when data from this report is used.

** Monthly municipal rates are reported as 3 month moving averages. All others are reported monthly.

Data for the County of Brant is not reported separately by Stats Canada. Prepared by the City of Brantford's Economic Development Department. Available at advantagebrantford.ca



* Source: Stats Canada. Based on persons of working age, 15 years and over. Statistics Canada must be credited when data from this report is used.

** Monthly municipal rates are reported as 3 month moving averages. All others are reported monthly.

Data for the County of Brant is not reported separately by Stats Canada. Prepared by the City of Brantford's Economic Development Department. Available at advantagebrantford.ca