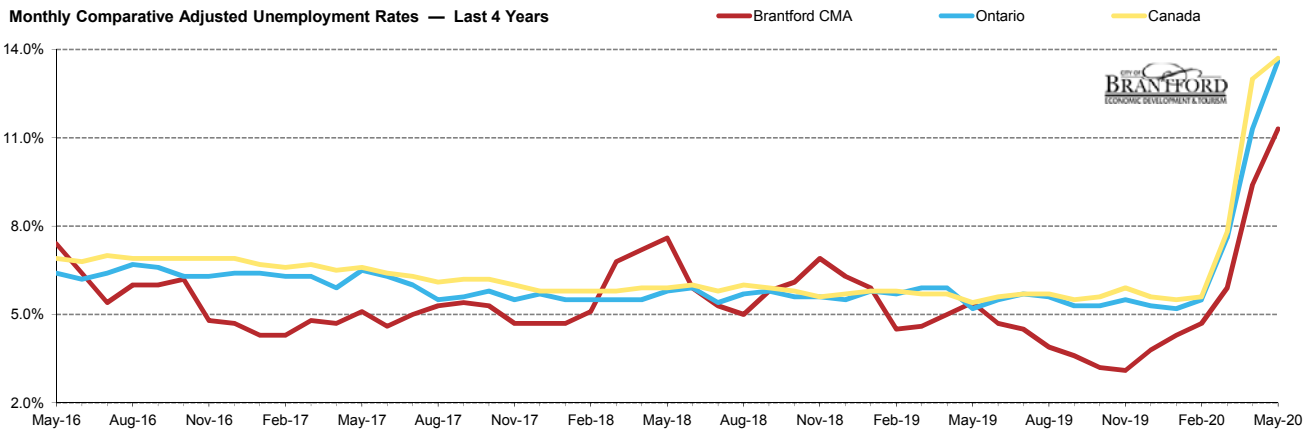


Brantford CMA	May-19	Jun-19	Jul-19	Aug-19	Sep-19	Oct-19	Nov-19	Dec-19	Jan-20	Feb-20	Mar-20	Apr-20	May-20	M/M	Y/Y
<b>Total Population</b>	117,700	117,900	118,100	118,200	118,400	118,600	118,800	118,900	119,000	119,100	119,200	119,400	119,400	0	1,700
<b>Labour Force</b>	84,100	84,900	85,100	84,500	83,200	81,600	81,000	80,600	79,900	78,400	77,600	77,300	78,000	700	-6,100
<b>Employed</b>	79,600	80,800	81,300	81,100	80,200	79,000	78,400	77,500	76,500	74,700	73,000	70,000	69,200	-800	-10,400
<b>Unemployed</b>	4,500	4,000	3,800	3,300	3,000	2,600	2,500	3,100	3,400	3,700	4,600	7,300	8,800	1,500	4,300
<b>Unemploy'm't Rate</b>	5.4%	4.7%	4.5%	3.9%	3.6%	3.2%	3.1%	3.8%	4.3%	4.7%	5.9%	9.4%	11.3%	1.9	5.9
<b>Participat'n Rate</b>	71.5%	72.0%	72.1%	71.5%	70.3%	68.8%	68.2%	67.8%	67.1%	65.8%	65.1%	64.7%	65.3%	0.6	-6.2
<b>Employ'm't Rate</b>	67.6%	68.5%	68.8%	68.6%	67.7%	66.6%	66.0%	65.2%	64.3%	62.7%	61.2%	58.6%	58.0%	-0.6	-9.6

Monthly Comparative Adjusted Unemployment Rates — Last 4 Years

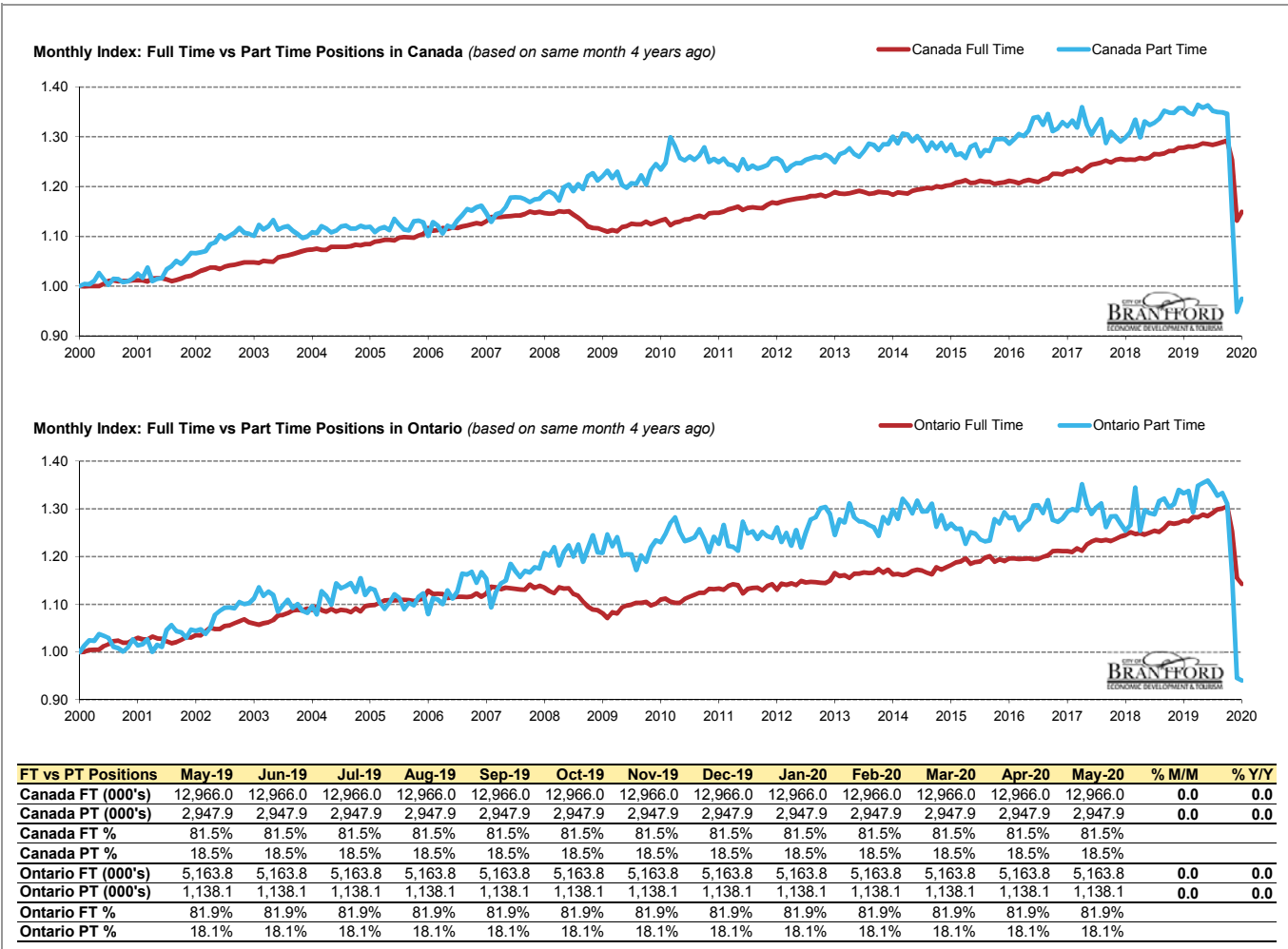
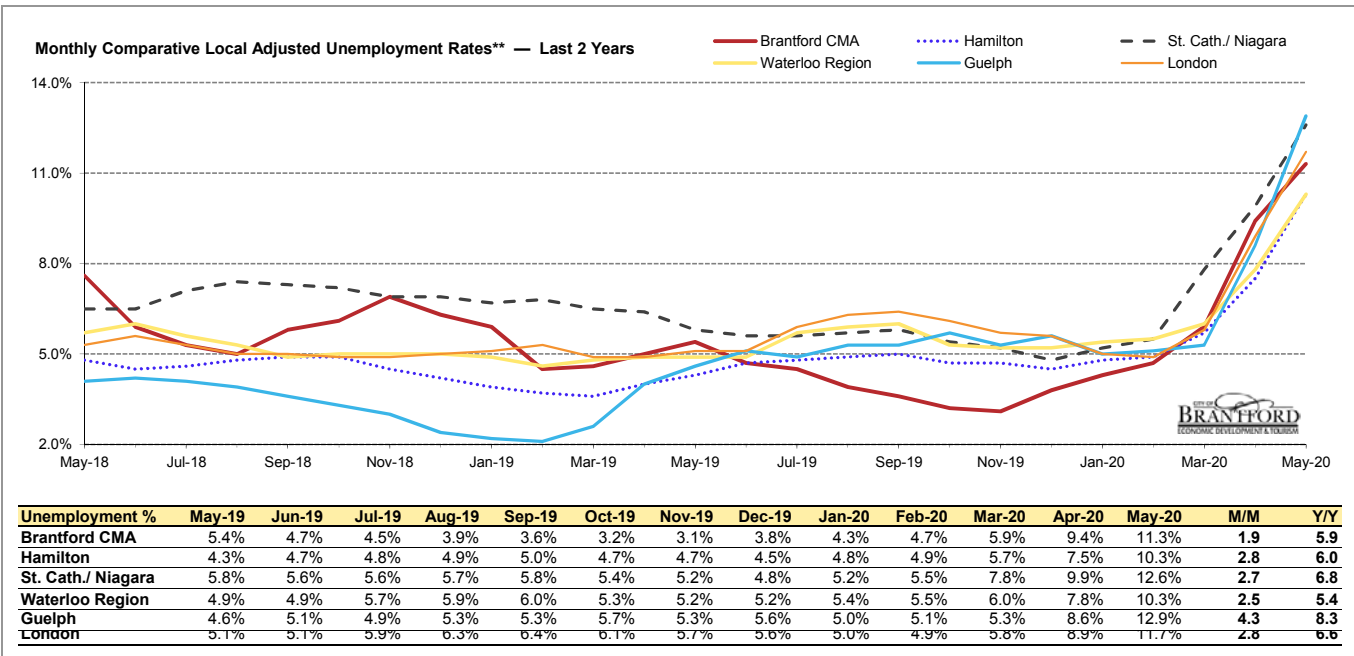


Unemployment %	May-19	Jun-19	Jul-19	Aug-19	Sep-19	Oct-19	Nov-19	Dec-19	Jan-20	Feb-20	Mar-20	Apr-20	May-20	M/M	Y/Y
<b>Brantford CMA **</b>	5.4%	4.7%	4.5%	3.9%	3.6%	3.2%	3.1%	3.8%	4.3%	4.7%	5.9%	9.4%	11.3%	1.9	5.9
<b>Ontario</b>	5.2%	5.5%	5.7%	5.6%	5.3%	5.3%	5.5%	5.3%	5.2%	5.5%	7.6%	11.3%	13.6%	2.3	8.4
<b>Canada</b>	5.4%	5.6%	5.7%	5.7%	5.5%	5.6%	5.9%	5.6%	5.5%	5.6%	7.8%	13.0%	13.7%	0.7	8.3

\* Source: Stats Canada. Based on persons of working age, 15 years and over. Statistics Canada must be credited when data from this report is used.

\*\* Monthly municipal rates are reported as 3 month moving averages. All others are reported monthly.

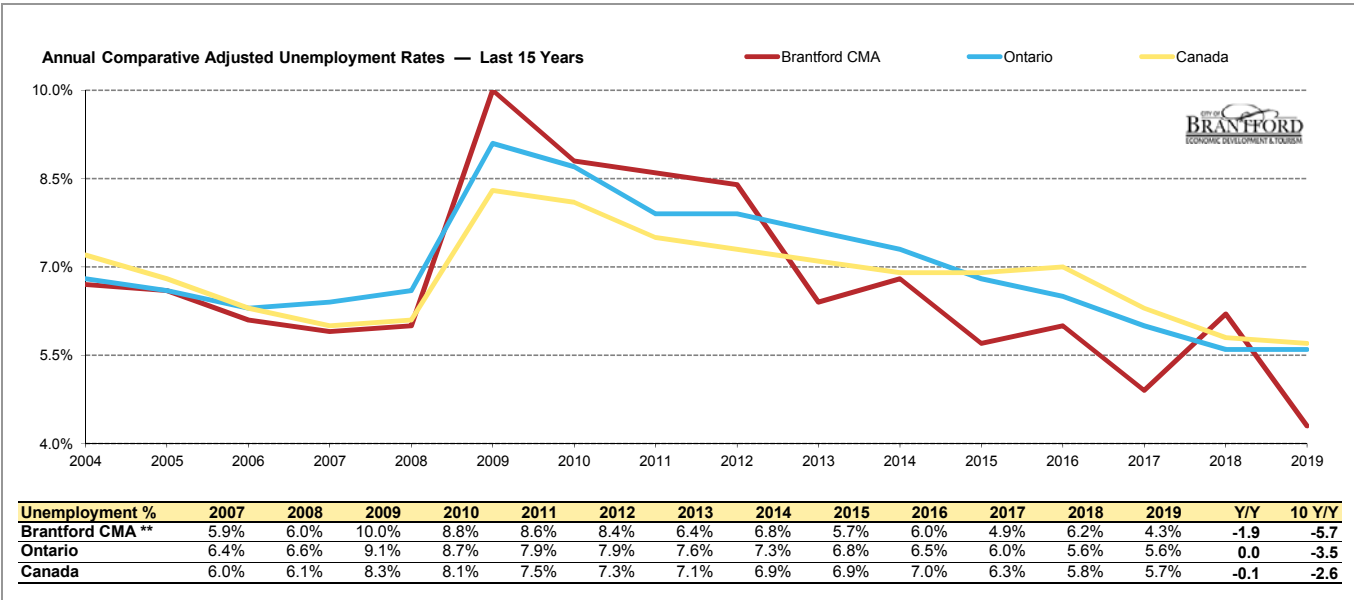
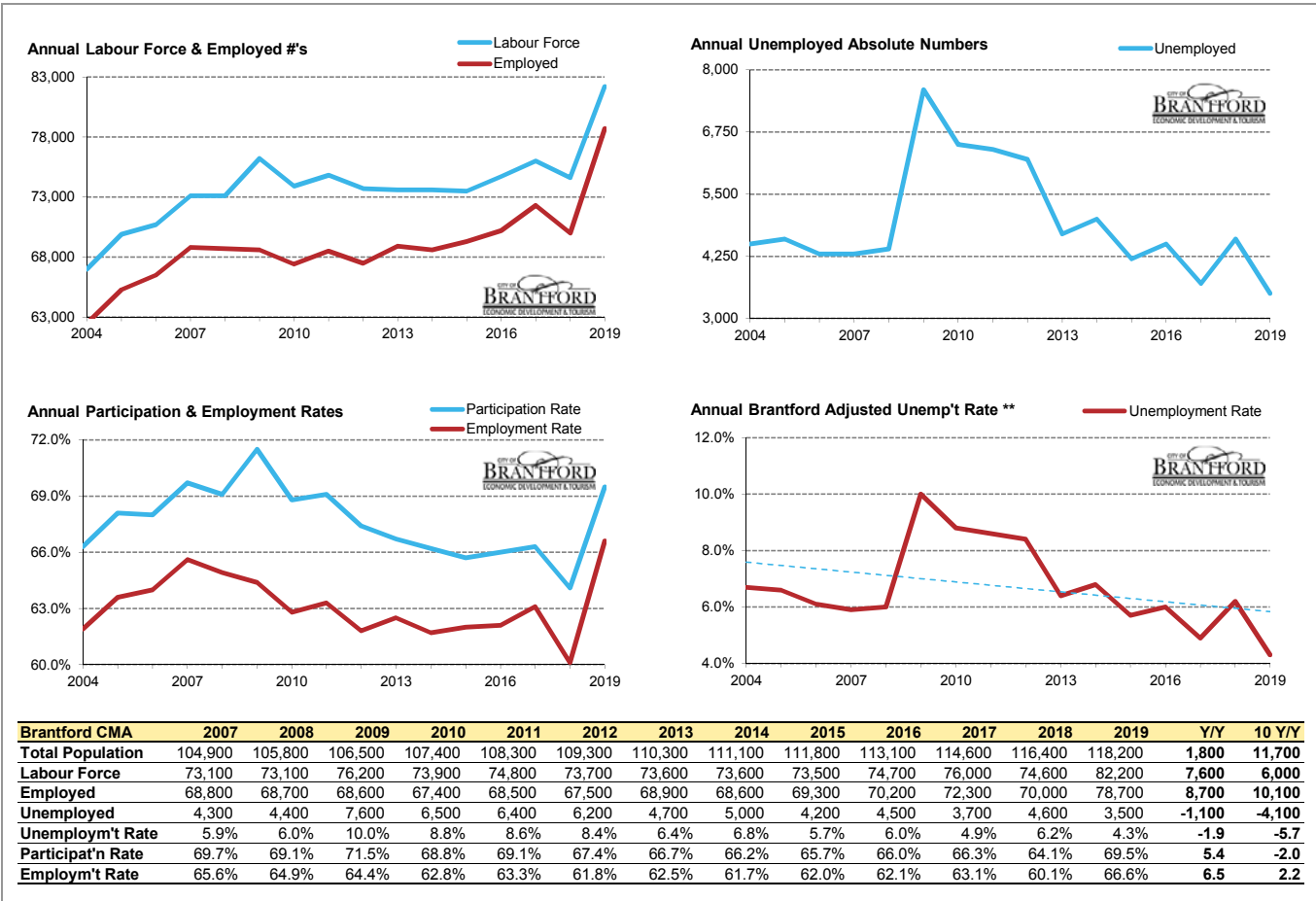
Data for the County of Brant is not reported separately by Stats Canada. Prepared by the City of Brantford's Economic Development Department. Available at [advantagebrantford.ca](http://advantagebrantford.ca)



\* Source: Stats Canada. Based on persons of working age, 15 years and over. Statistics Canada must be credited when data from this report is used.

\*\* Monthly municipal rates are reported as 3 month moving averages. All others are reported monthly.

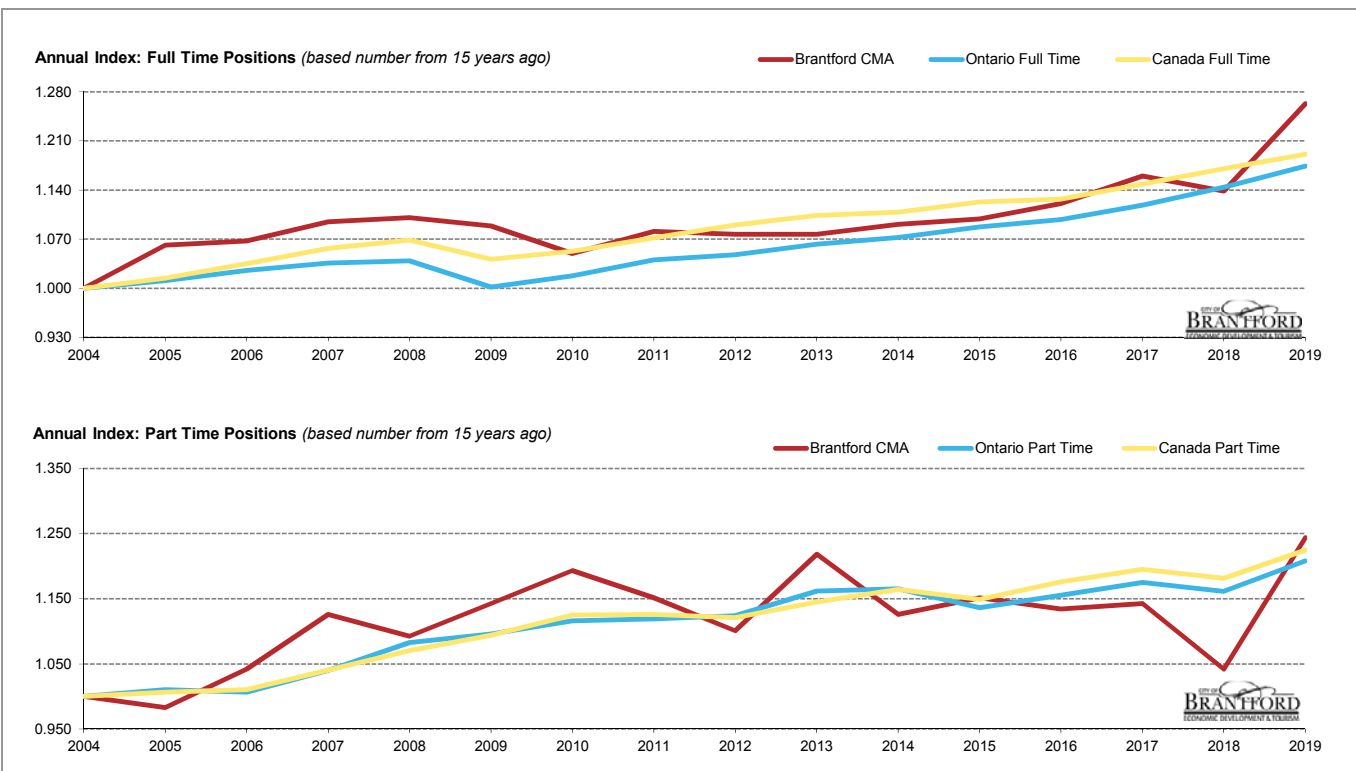
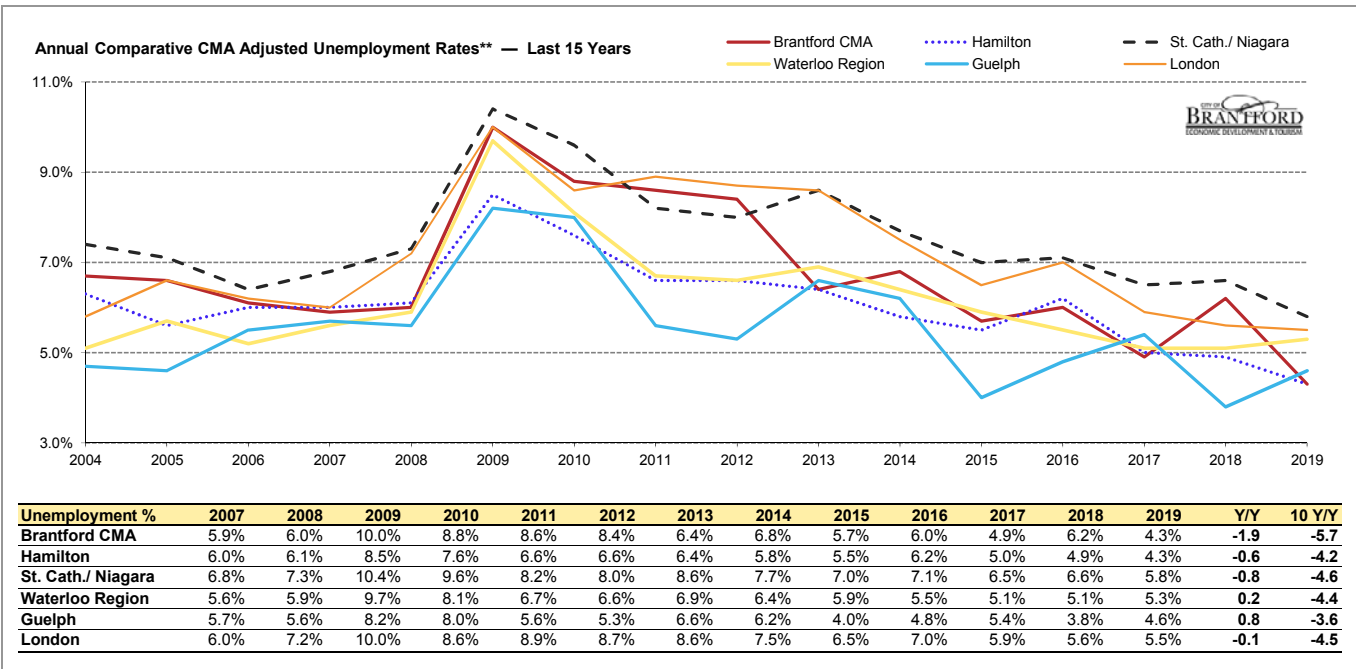
Data for the County of Brant is not reported separately by Stats Canada. Prepared by the City of Brantford's Economic Development Department. Available at [advantagebrantford.ca](http://advantagebrantford.ca)



\* Source: Stats Canada. Based on persons of working age, 15 years and over. Statistics Canada must be credited when data from this report is used.

\*\* Monthly municipal rates are reported as 3 month moving averages. All others are reported monthly.

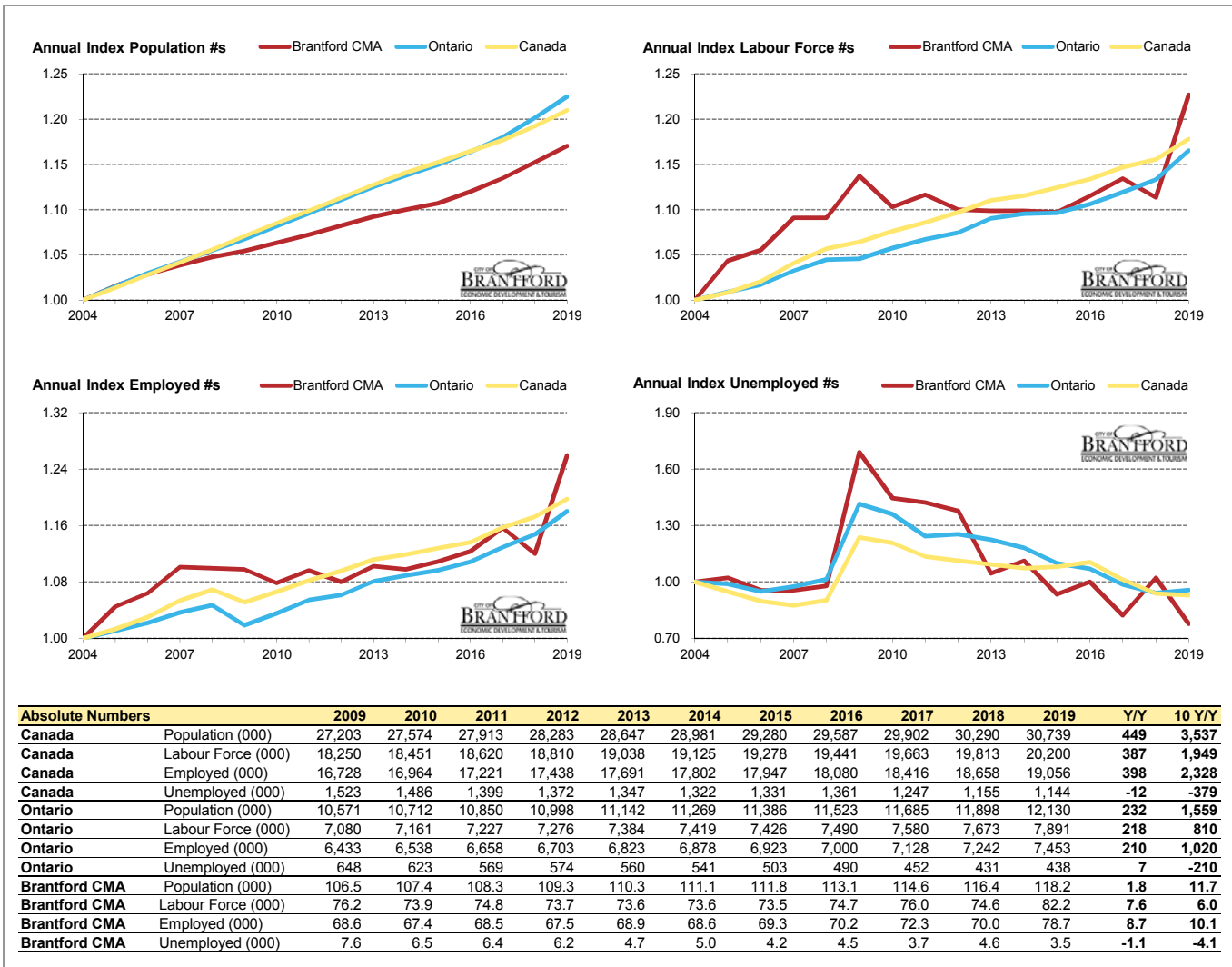
Data for the County of Brant is not reported separately by Stats Canada. Prepared by the City of Brantford's Economic Development Department. Available at [advantagebrantford.ca](http://advantagebrantford.ca)



FT vs PT Positions	2007	2008	2009	2010	2011	2012	2013	2014	2015	2016	2017	2018	2019	Y/Y %	10 Y/Y %
<b>Canada FT (000)</b>	13,702.1	13,854.7	13,502.6	13,647.2	13,900.9	14,133.2	14,314.2	14,369.9	14,559.3	14,612.2	14,892.8	15,174.8	15,445.1	1.8	14.4
<b>Canada PT (000)</b>	3,067.2	3,155.5	3,225.0	3,317.1	3,320.2	3,304.7	3,376.9	3,432.3	3,387.3	3,467.7	3,523.6	3,482.7	3,610.6	3.7	12.0
<b>Canada FT %</b>	81.7%	81.4%	80.7%	80.4%	80.7%	81.0%	80.9%	80.7%	81.1%	80.8%	80.9%	81.3%	81.1%		
<b>Canada PT %</b>	18.3%	18.6%	19.3%	19.6%	19.3%	19.0%	19.1%	19.3%	18.9%	19.2%	19.1%	18.7%	18.9%		
<b>Ontario FT (000)</b>	5,351.1	5,366.8	5,174.0	5,256.1	5,373.5	5,412.0	5,489.5	5,540.0	5,618.2	5,672.6	5,778.7	5,909.0	6,065.8	2.7	17.2
<b>Ontario PT (000)</b>	1,194.4	1,243.5	1,258.7	1,281.8	1,284.8	1,290.6	1,334.0	1,337.9	1,305.0	1,327.0	1,349.3	1,333.4	1,386.8	4.0	10.2
<b>Ontario FT %</b>	81.8%	81.2%	80.4%	80.4%	80.7%	80.7%	80.4%	80.5%	81.2%	81.0%	81.1%	81.6%	81.4%		
<b>Ontario PT %</b>	18.2%	18.8%	19.6%	19.6%	19.3%	19.3%	19.6%	19.5%	18.8%	19.0%	18.9%	18.4%	18.6%		
<b>Brantford FT (000)</b>	55.4	55.7	55.1	53.1	54.7	54.5	54.5	55.2	55.6	56.7	58.7	57.6	63.9	10.9	16.0
<b>Brantford PT (000)</b>	13.4	13.0	13.6	14.2	13.7	13.1	14.5	13.4	13.7	13.5	13.6	12.4	14.8	19.4	8.8
<b>Brantford FT %</b>	80.5%	81.1%	80.2%	78.9%	80.0%	80.6%	79.0%	80.5%	80.2%	80.8%	81.2%	82.3%	81.2%		
<b>Brantford PT %</b>	19.5%	18.9%	19.8%	21.1%	20.0%	19.4%	21.0%	19.5%	19.8%	19.2%	18.8%	17.7%	18.8%		

\* Source: Stats Canada. Based on persons of working age, 15 years and over. Statistics Canada must be credited when data from this report is used.  
 \*\* Monthly municipal rates are reported as 3 month moving averages. All others are reported monthly.

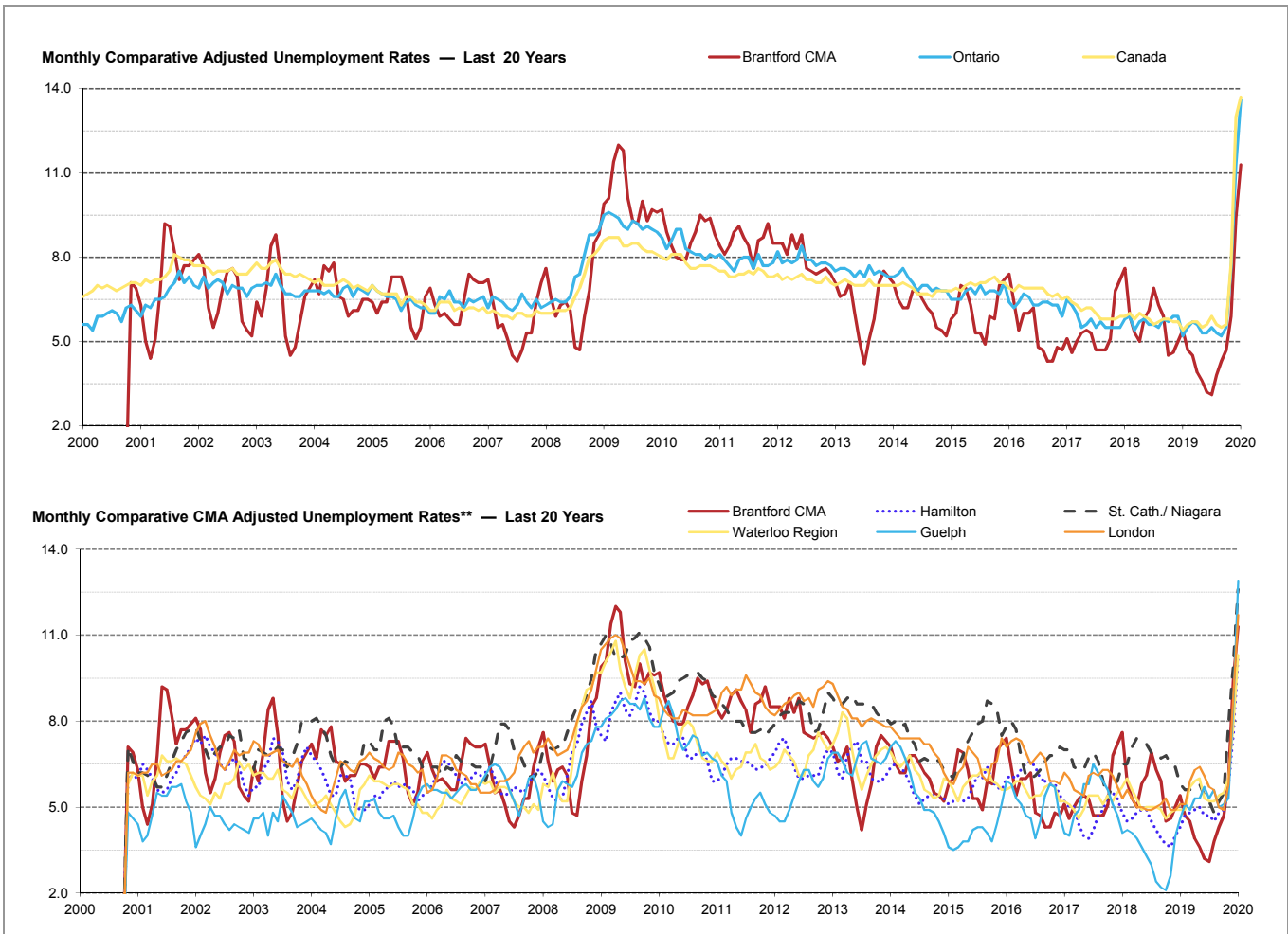
Data for the County of Brant is not reported separately by Stats Canada. Prepared by the City of Brantford's Economic Development Department. Available at [advantagebrantford.ca](http://advantagebrantford.ca)



\* Source: Stats Canada. Based on persons of working age, 15 years and over. Statistics Canada must be credited when data from this report is used.

\*\* Monthly municipal rates are reported as 3 month moving averages. All others are reported monthly.

Data for the County of Brant is not reported separately by Stats Canada. Prepared by the City of Brantford's Economic Development Department. Available at [advantagebrantford.ca](http://advantagebrantford.ca)



\* Source: Stats Canada. Based on persons of working age, 15 years and over. Statistics Canada must be credited when data from this report is used.

\*\* Monthly municipal rates are reported as 3 month moving averages. All others are reported monthly.

Data for the County of Brant is not reported separately by Stats Canada. Prepared by the City of Brantford's Economic Development Department. Available at [advantagebrantford.ca](http://advantagebrantford.ca)