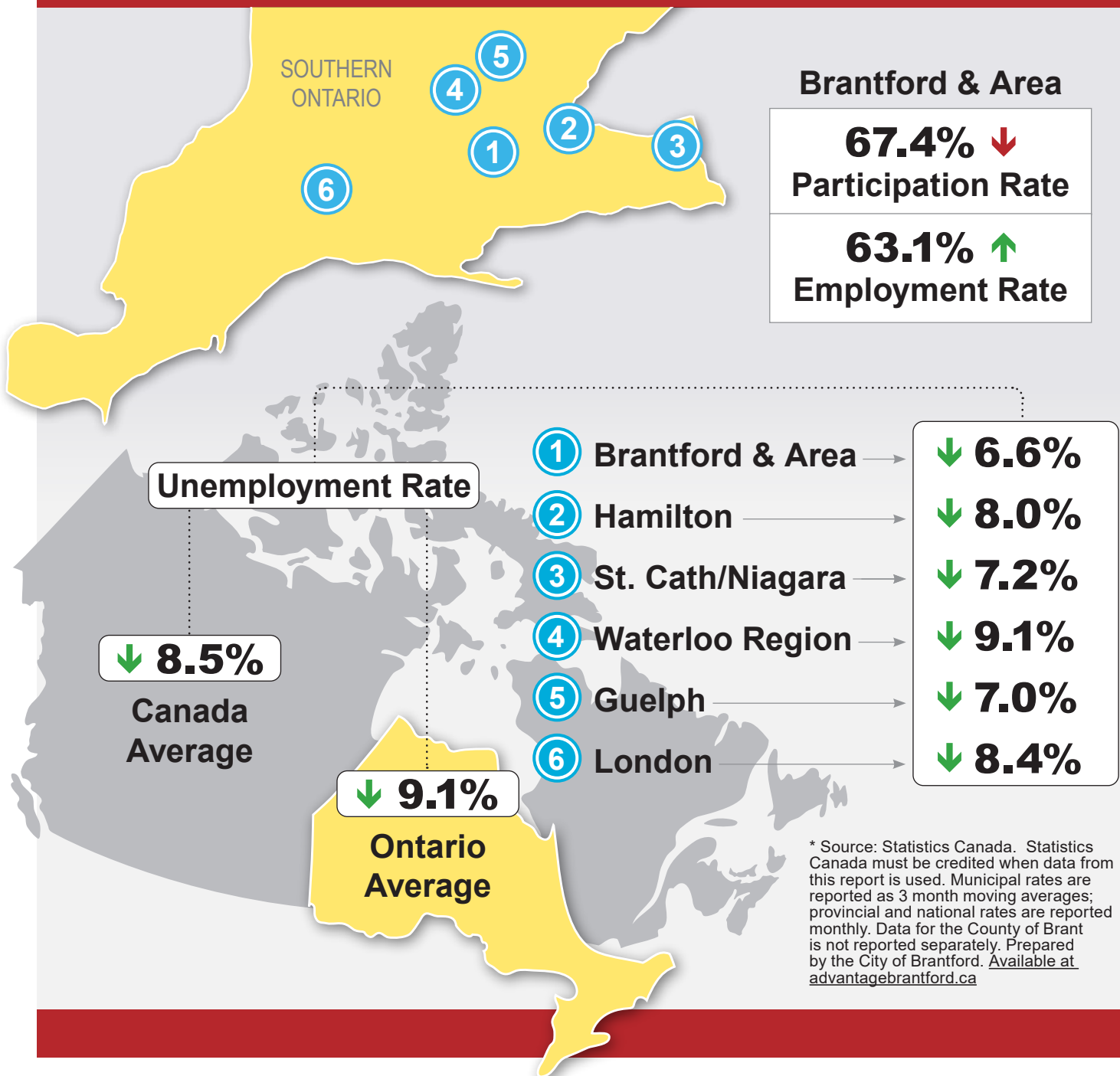
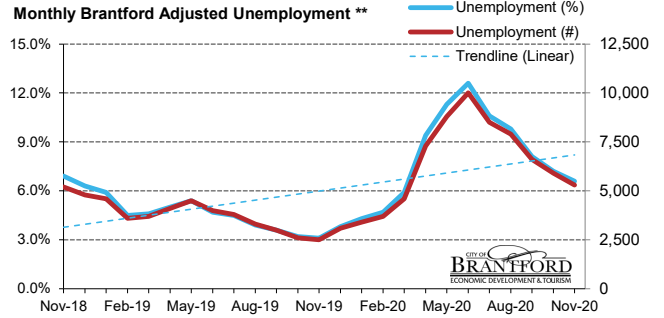
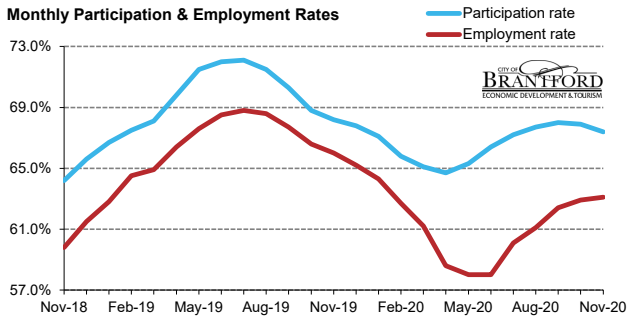
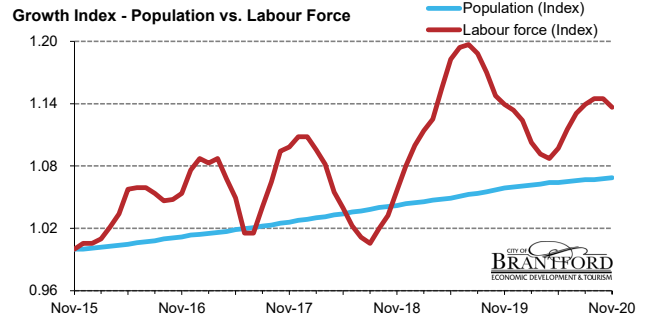
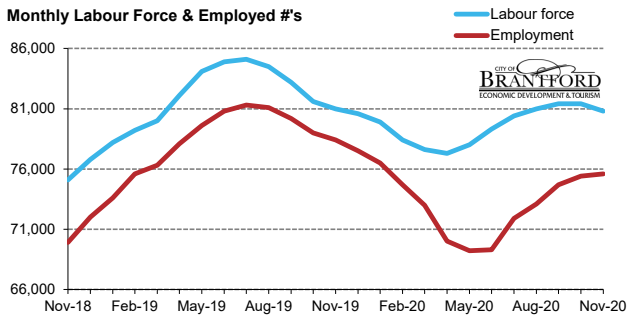


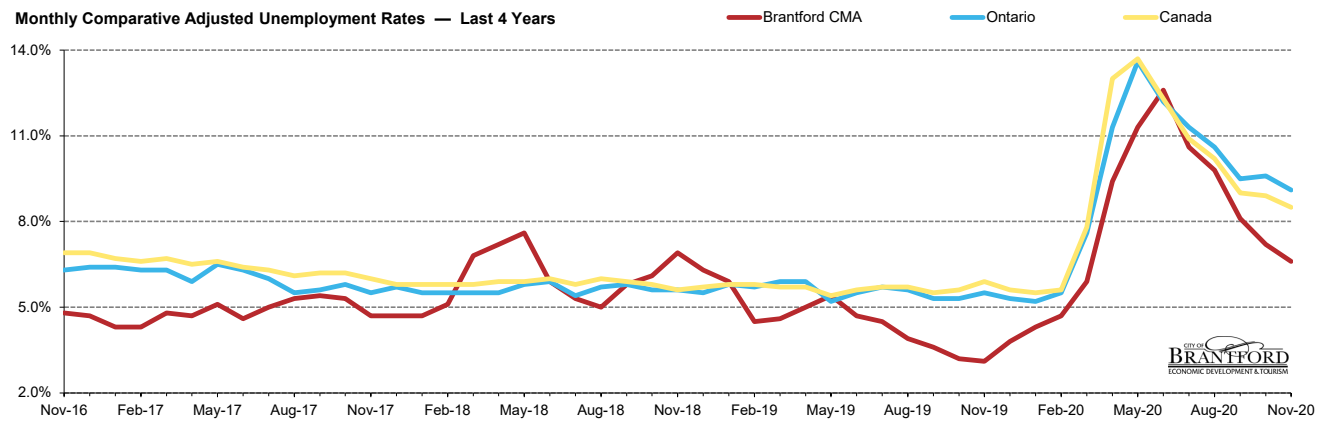


## Local Labour Market Report\*





Brantford CMA	Nov-19	Dec-19	Jan-20	Feb-20	Mar-20	Apr-20	May-20	Jun-20	Jul-20	Aug-20	Sep-20	Oct-20	Nov-20	M/M	Y/Y
<b>Total Population</b>	118,800	118,900	119,000	119,100	119,200	119,400	119,400	119,500	119,600	119,700	119,700	119,800	119,900	100	1,100
<b>Labour Force</b>	81,000	80,600	79,900	78,400	77,600	77,300	78,000	79,300	80,400	81,000	81,400	81,400	80,800	-600	-200
<b>Employed</b>	78,400	77,500	76,500	74,700	73,000	70,000	69,200	69,300	71,900	73,100	74,700	75,400	75,600	200	-2,800
<b>Unemployed</b>	2,500	3,100	3,400	3,700	4,600	7,300	8,800	10,000	8,500	7,900	6,600	5,900	5,300	-600	2,800
<b>Unemploy'm't Rate</b>	3.1%	3.8%	4.3%	4.7%	5.9%	9.4%	11.3%	12.6%	10.6%	9.8%	8.1%	7.2%	6.6%	-0.6	3.5
<b>Participat'n Rate</b>	68.2%	67.8%	67.1%	65.8%	65.1%	64.7%	65.3%	66.4%	67.2%	67.7%	68.0%	67.9%	67.4%	-0.5	-0.8
<b>Employ'm't Rate</b>	66.0%	65.2%	64.3%	62.7%	61.2%	58.6%	58.0%	58.0%	60.1%	61.1%	62.4%	62.9%	63.1%	0.2	-2.9

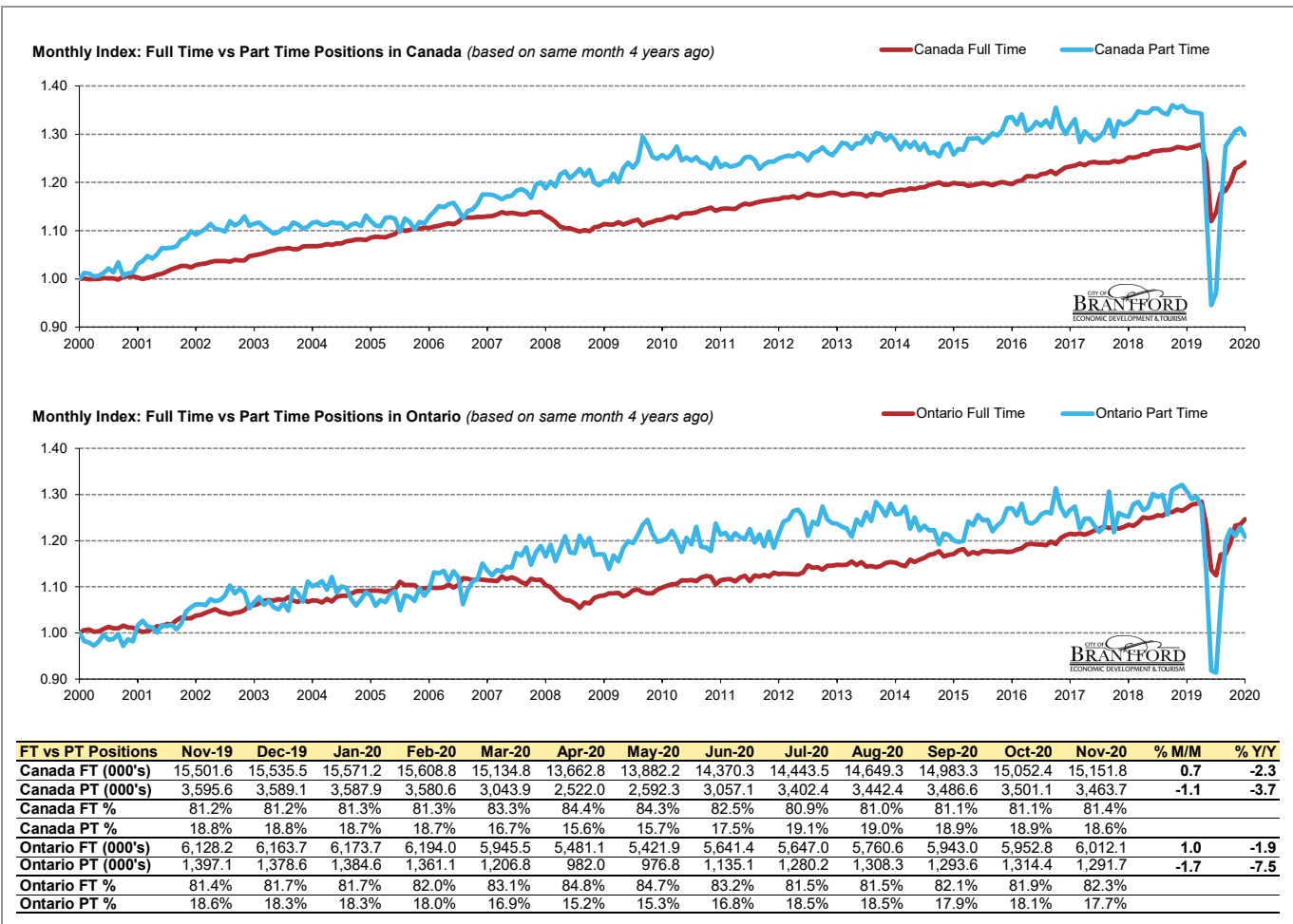
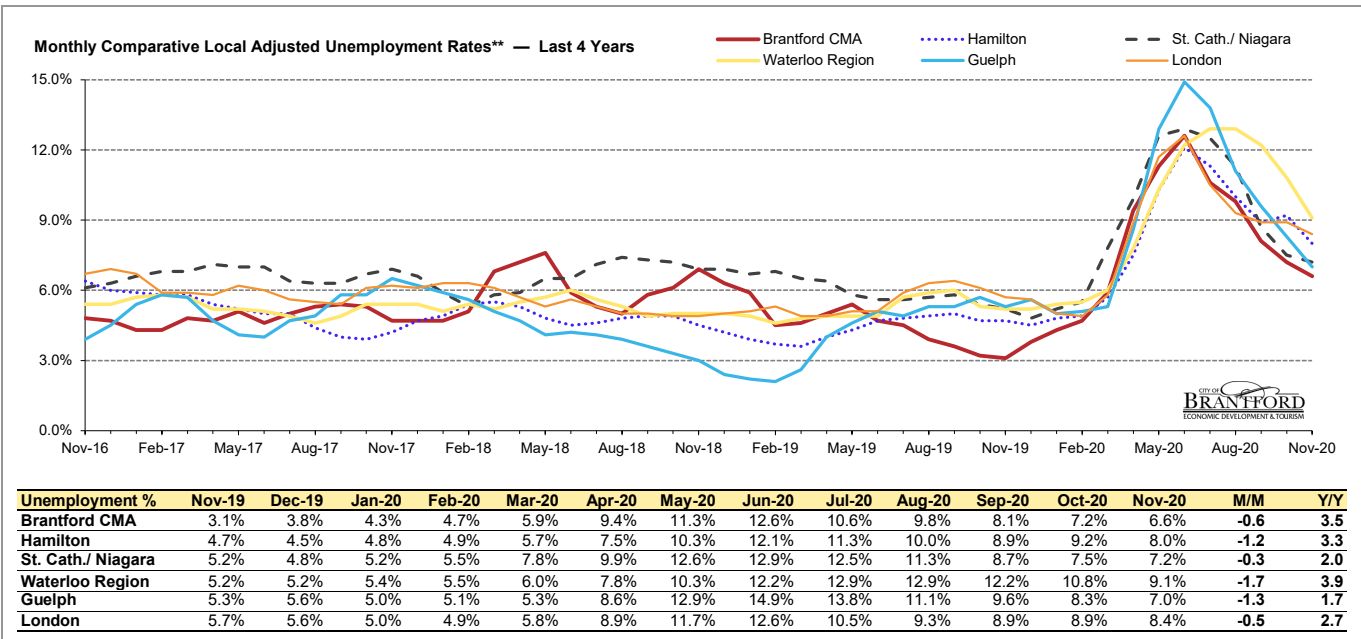


Unemployment %	Nov-19	Dec-19	Jan-20	Feb-20	Mar-20	Apr-20	May-20	Jun-20	Jul-20	Aug-20	Sep-20	Oct-20	Nov-20	M/M	Y/Y
<b>Brantford CMA **</b>	3.1%	3.8%	4.3%	4.7%	5.9%	9.4%	11.3%	12.6%	10.6%	9.8%	8.1%	7.2%	6.6%	-0.6	3.5
<b>Ontario</b>	5.5%	5.3%	5.2%	5.5%	7.6%	11.3%	13.6%	12.2%	11.3%	10.6%	9.5%	9.6%	9.1%	-0.5	3.6
<b>Canada</b>	5.9%	5.6%	5.5%	5.6%	7.8%	13.0%	13.7%	12.3%	10.9%	10.2%	9.0%	8.9%	8.5%	-0.4	2.6

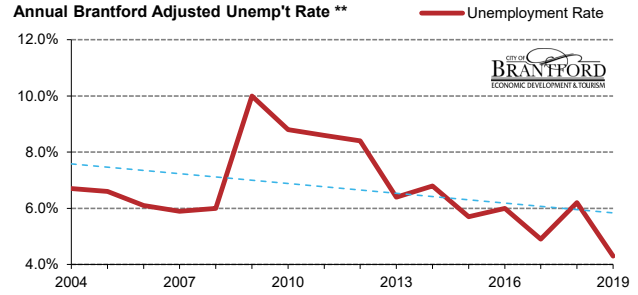
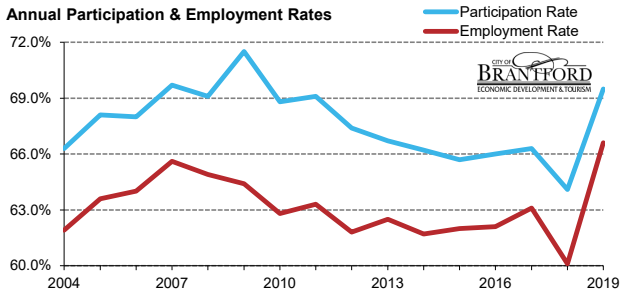
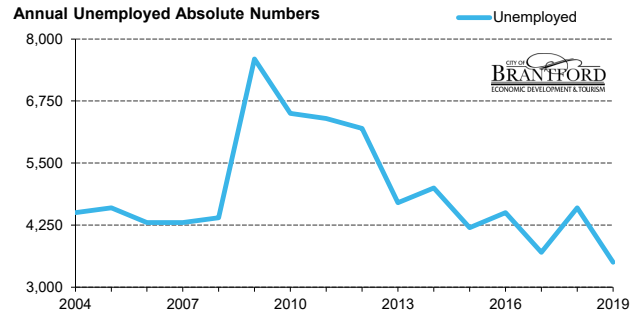
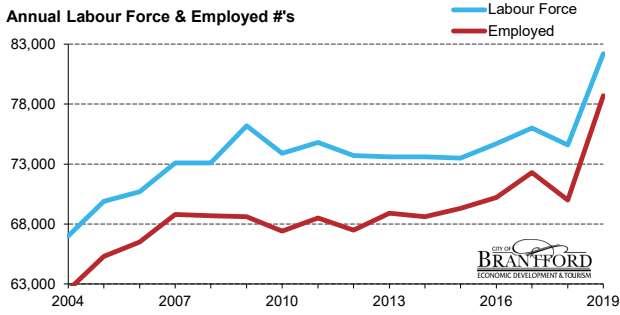
\* Source: Stats Canada. Based on persons of working age, 15 years and over. Statistics Canada must be credited when data from this report is used.

\*\* Monthly municipal rates are reported as 3 month moving averages. All others are reported monthly.

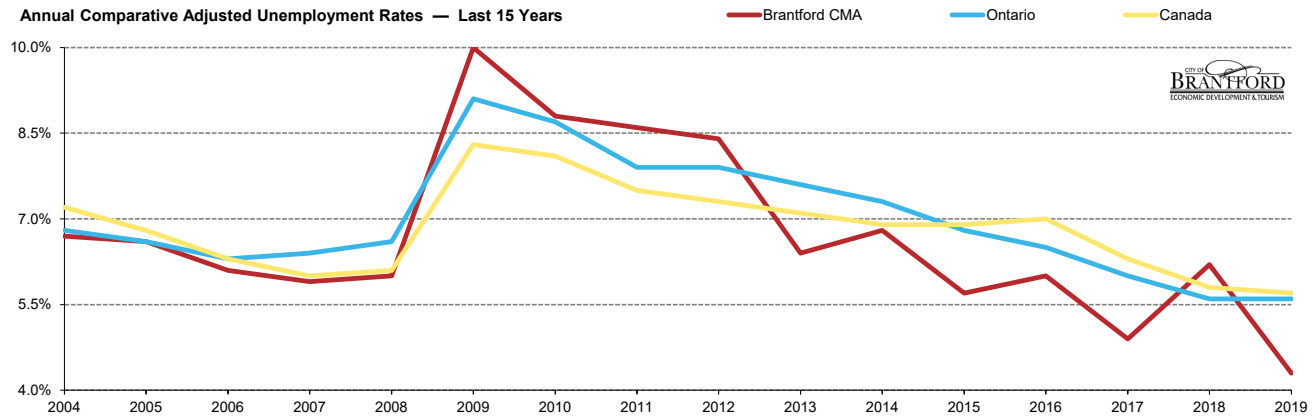
Data for the County of Brant is not reported separately by Stats Canada. Prepared by the City of Brantford's Economic Development Department. Available at [advantagebrantford.ca](http://advantagebrantford.ca)



\* Source: Stats Canada. Based on persons of working age, 15 years and over. **Statistics Canada must be credited when data from this report is used.**  
 \*\* Monthly municipal rates are reported as 3 month moving averages. All others are reported monthly.  
 Data for the County of Brant is not reported separately by Stats Canada. Prepared by the City of Brantford's Economic Development Department. Available at [advantagebrantford.ca](http://advantagebrantford.ca)

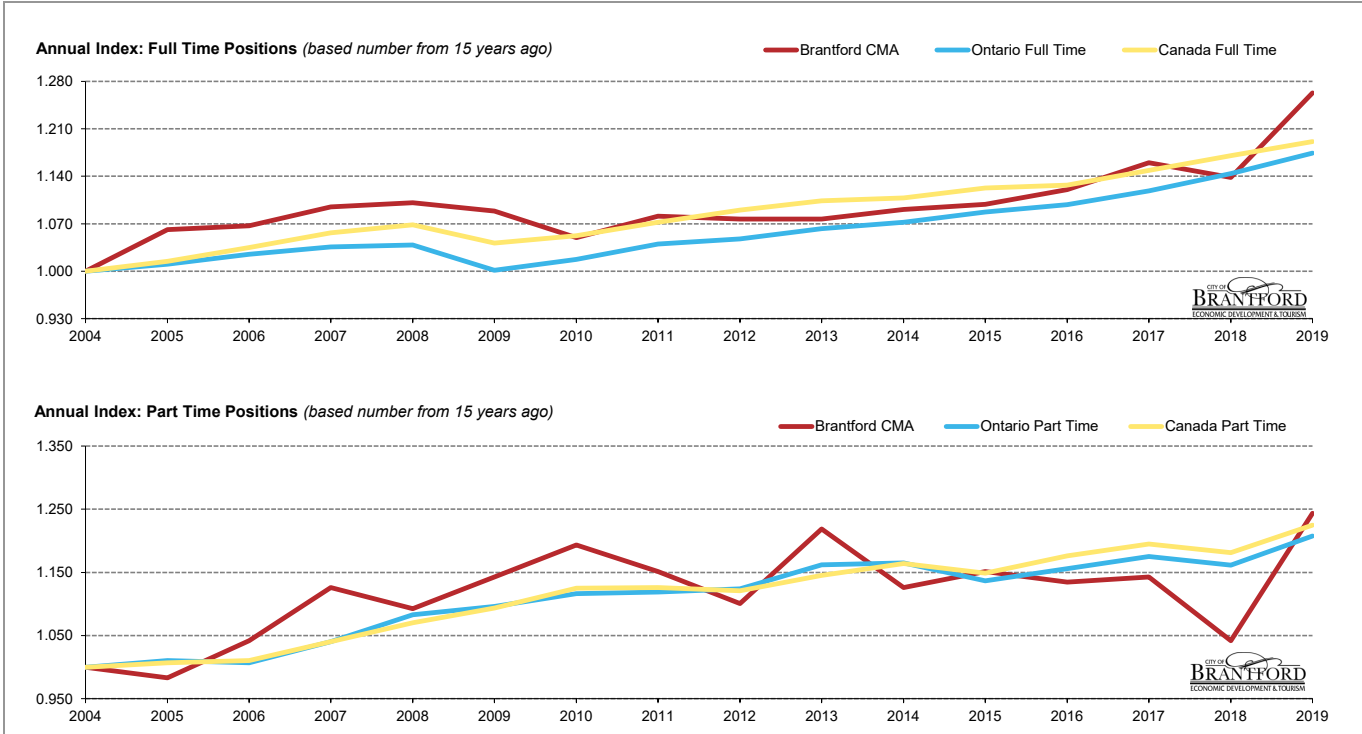
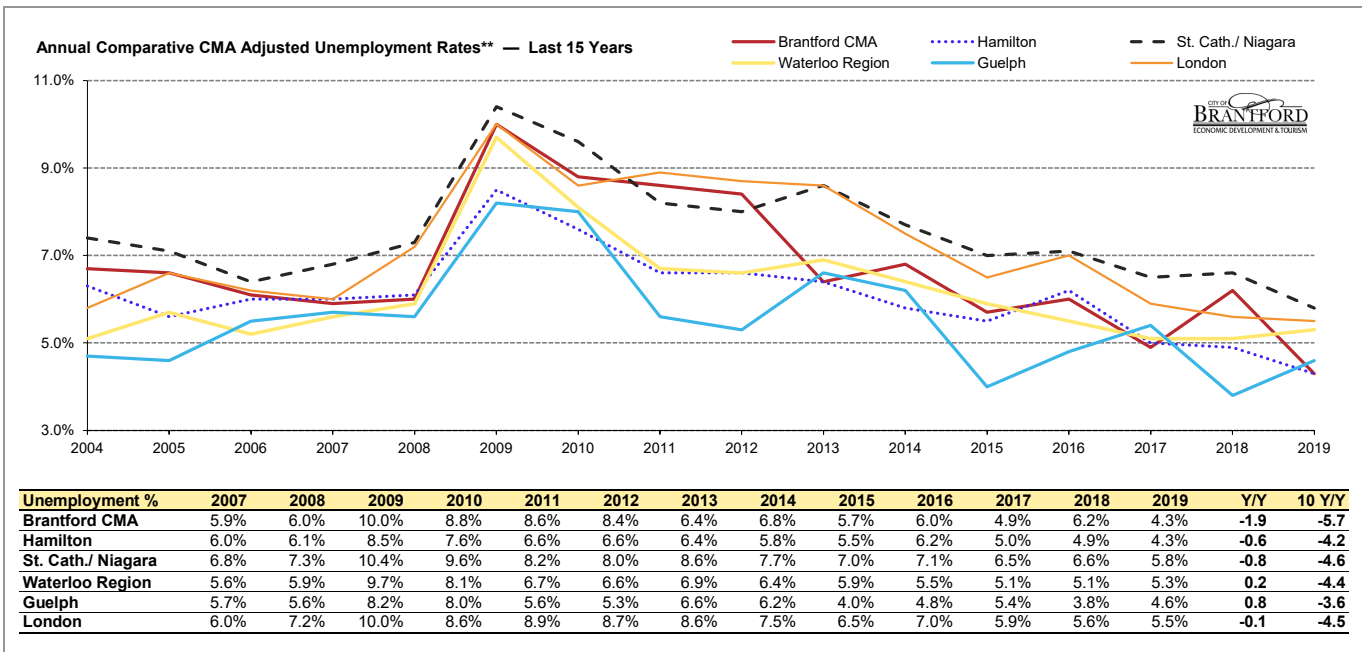


Brantford CMA	2007	2008	2009	2010	2011	2012	2013	2014	2015	2016	2017	2018	2019	Y/Y	10 Y/Y
<b>Total Population</b>	104,900	105,800	106,500	107,400	108,300	109,300	110,300	111,100	111,800	113,100	114,600	116,400	118,200	1,800	11,700
<b>Labour Force</b>	73,100	73,100	76,200	73,900	74,800	73,700	73,600	73,600	73,500	74,700	76,000	74,600	82,200	7,600	6,000
<b>Employed</b>	68,800	68,700	68,600	67,400	68,500	67,500	68,900	68,600	69,300	70,200	72,300	70,000	78,700	8,700	10,100
<b>Unemployed</b>	4,300	4,400	7,600	6,500	6,400	6,200	4,700	5,000	4,200	4,500	3,700	4,600	3,500	-1,100	-4,100
<b>Unemploy't Rate</b>	5.9%	6.0%	10.0%	8.8%	8.6%	8.4%	6.4%	6.8%	5.7%	6.0%	4.9%	6.2%	4.3%	-1.9	-5.7
<b>Participat'n Rate</b>	69.7%	69.1%	71.5%	68.8%	69.1%	67.4%	66.7%	66.2%	65.7%	66.0%	66.3%	64.1%	69.5%	5.4	-2.0
<b>Employ'm't Rate</b>	65.6%	64.9%	64.4%	62.8%	63.3%	61.8%	62.5%	61.7%	62.0%	62.1%	63.1%	60.1%	66.6%	6.5	2.2



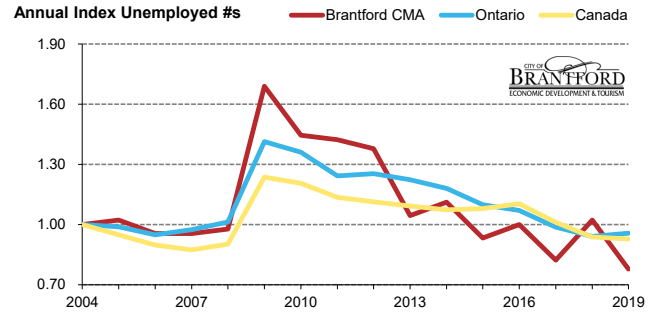
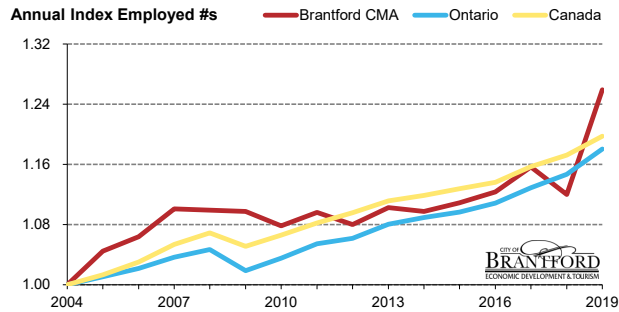
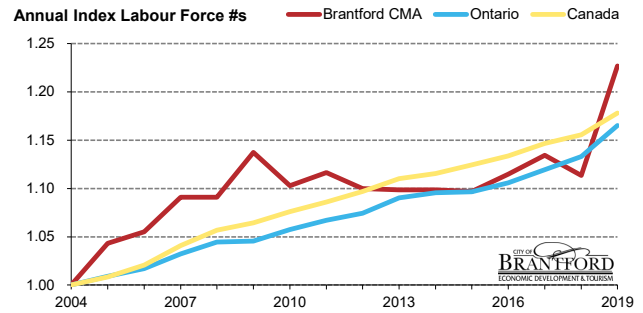
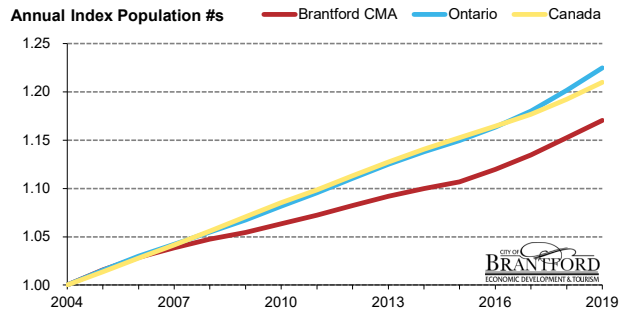
	2007	2008	2009	2010	2011	2012	2013	2014	2015	2016	2017	2018	2019	Y/Y	10 Y/Y
<b>Unemployment %</b>	5.9%	6.0%	10.0%	8.8%	8.6%	8.4%	6.4%	6.8%	5.7%	6.0%	4.9%	6.2%	4.3%	-1.9	-5.7
<b>Brantford CMA **</b>	5.9%	6.0%	10.0%	8.8%	8.6%	8.4%	6.4%	6.8%	5.7%	6.0%	4.9%	6.2%	4.3%	-1.9	-5.7
<b>Ontario</b>	6.4%	6.6%	9.1%	8.7%	7.9%	7.9%	7.6%	7.3%	6.8%	6.5%	6.0%	5.6%	5.6%	0.0	-3.5
<b>Canada</b>	6.0%	6.1%	8.3%	8.1%	7.5%	7.3%	7.1%	6.9%	6.9%	7.0%	6.3%	5.8%	5.7%	-0.1	-2.6

\* Source: Stats Canada. Based on persons of working age, 15 years and over. Statistics Canada must be credited when data from this report is used.  
 \*\* Monthly municipal rates are reported as 3 month moving averages. All others are reported monthly.  
 Data for the County of Brant is not reported separately by Stats Canada. Prepared by the City of Brantford's Economic Development Department. Available at [advantagebrantford.ca](http://advantagebrantford.ca)



FT vs PT Positions	2007	2008	2009	2010	2011	2012	2013	2014	2015	2016	2017	2018	2019	Y/Y %	10 Y/Y %
<b>Canada FT (000)</b>	13,702.1	13,854.7	13,502.6	13,647.2	13,900.9	14,133.2	14,314.2	14,369.9	14,559.3	14,612.2	14,892.8	15,174.8	15,445.1	1.8	14.4
<b>Canada PT (000)</b>	3,067.2	3,155.5	3,225.0	3,317.1	3,320.2	3,304.7	3,376.9	3,432.3	3,387.3	3,467.7	3,523.6	3,482.7	3,610.6	3.7	12.0
<b>Canada FT %</b>	81.7%	81.4%	80.7%	80.4%	80.7%	81.0%	80.9%	80.7%	81.1%	80.8%	80.9%	81.3%	81.1%		
<b>Canada PT %</b>	18.3%	18.6%	19.3%	19.6%	19.3%	19.0%	19.1%	19.3%	18.9%	19.2%	19.1%	18.7%	18.9%		
<b>Ontario FT (000)</b>	5,351.1	5,366.8	5,174.0	5,256.1	5,373.5	5,412.0	5,489.5	5,540.0	5,618.2	5,672.6	5,778.7	5,909.0	6,065.8	2.7	17.2
<b>Ontario PT (000)</b>	1,194.4	1,243.5	1,258.7	1,281.8	1,284.8	1,290.6	1,334.0	1,337.9	1,305.0	1,327.0	1,349.3	1,333.4	1,386.8	4.0	10.2
<b>Ontario FT %</b>	81.8%	81.2%	80.4%	80.4%	80.7%	80.7%	80.4%	80.5%	81.2%	81.0%	81.1%	81.6%	81.4%		
<b>Ontario PT %</b>	18.2%	18.8%	19.6%	19.6%	19.3%	19.3%	19.6%	19.5%	18.8%	19.0%	18.9%	18.4%	18.6%		
<b>Brantford FT (000)</b>	55.4	55.7	55.1	53.1	54.7	54.5	54.5	55.2	55.6	56.7	58.7	57.6	63.9	10.9	16.0
<b>Brantford PT (000)</b>	13.4	13.0	13.6	14.2	13.7	13.1	14.5	13.4	13.7	13.5	13.6	12.4	14.8	19.4	8.8
<b>Brantford FT %</b>	80.5%	81.1%	80.2%	78.9%	80.0%	80.6%	79.0%	80.5%	80.2%	80.8%	81.2%	82.3%	81.2%		
<b>Brantford PT %</b>	19.5%	18.9%	19.8%	21.1%	20.0%	19.4%	21.0%	19.5%	19.8%	19.2%	18.8%	17.7%	18.8%		

\* Source: Stats Canada. Based on persons of working age, 15 years and over. **Statistics Canada must be credited when data from this report is used.**  
 \*\* Monthly municipal rates are reported as 3 month moving averages. All others are reported monthly.  
 Data for the County of Brant is not reported separately by Stats Canada. Prepared by the City of Brantford's Economic Development Department. Available at [advantagebrantford.ca](http://advantagebrantford.ca)

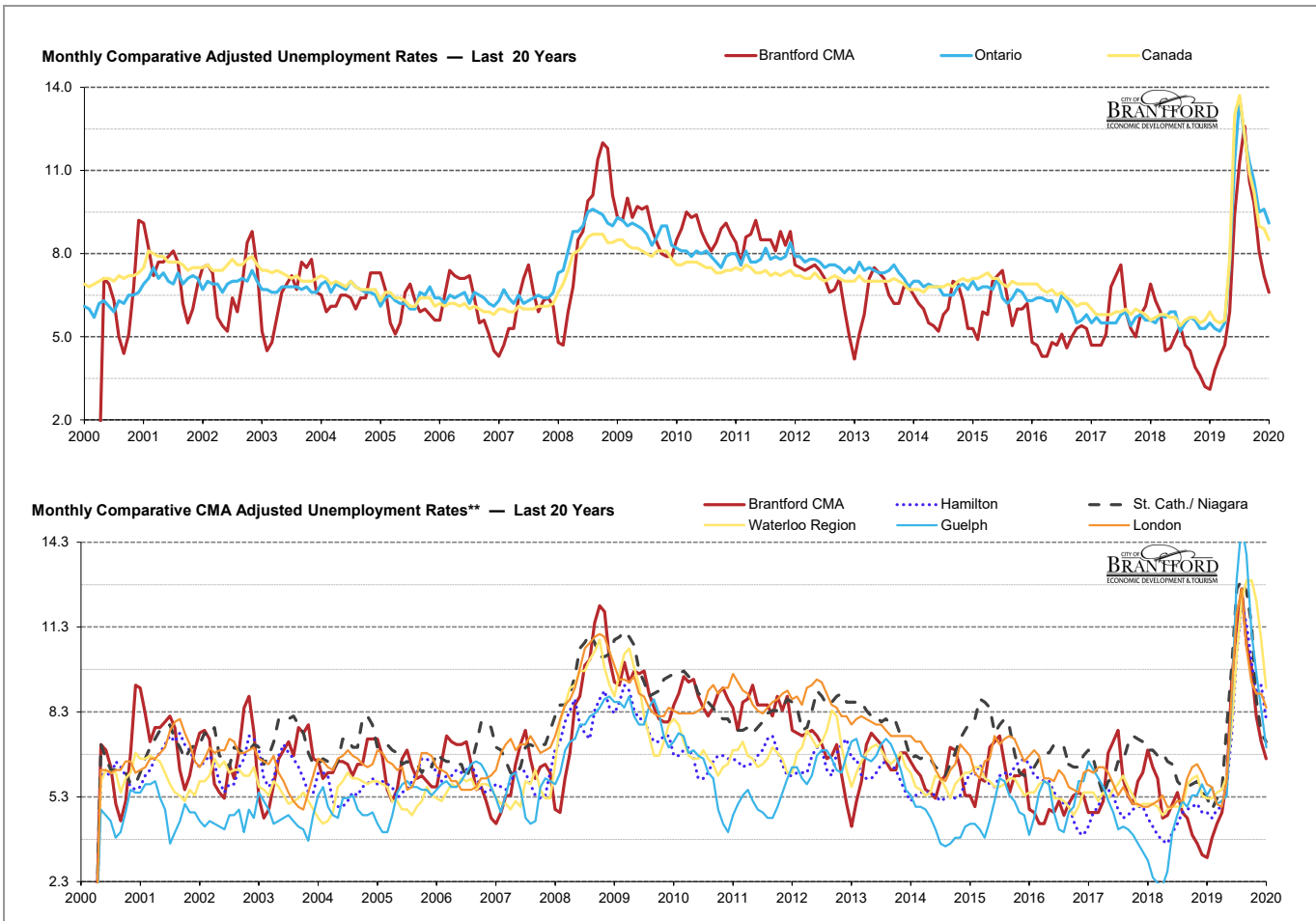


Absolute Numbers		2009	2010	2011	2012	2013	2014	2015	2016	2017	2018	2019	Y/Y	10 Y/Y
Canada	Population (000)	27,203	27,574	27,913	28,283	28,647	28,981	29,280	29,587	29,902	30,290	30,739	449	3,537
Canada	Labour Force (000)	18,250	18,451	18,620	18,810	19,038	19,125	19,278	19,441	19,663	19,813	20,200	387	1,949
Canada	Employed (000)	16,728	16,964	17,221	17,438	17,691	17,802	17,947	18,080	18,416	18,658	19,056	398	2,328
Canada	Unemployed (000)	1,523	1,486	1,399	1,372	1,347	1,322	1,331	1,361	1,247	1,155	1,144	-12	-379
Ontario	Population (000)	10,571	10,712	10,850	10,998	11,142	11,269	11,386	11,523	11,685	11,898	12,130	232	1,559
Ontario	Labour Force (000)	7,080	7,161	7,227	7,276	7,384	7,419	7,426	7,490	7,580	7,673	7,891	218	810
Ontario	Employed (000)	6,433	6,538	6,658	6,703	6,823	6,878	6,923	7,000	7,128	7,242	7,453	210	1,020
Ontario	Unemployed (000)	648	623	569	574	560	541	503	490	452	431	438	7	-210
Brantford CMA	Population (000)	106.5	107.4	108.3	109.3	110.3	111.1	111.8	113.1	114.6	116.4	118.2	1.8	11.7
Brantford CMA	Labour Force (000)	76.2	73.9	74.8	73.7	73.6	73.6	73.5	74.7	76.0	74.6	82.2	7.6	6.0
Brantford CMA	Employed (000)	68.6	67.4	68.5	67.5	68.9	68.6	69.3	70.2	72.3	70.0	78.7	8.7	10.1
Brantford CMA	Unemployed (000)	7.6	6.5	6.4	6.2	4.7	5.0	4.2	4.5	3.7	4.6	3.5	-1.1	-4.1

\* Source: Stats Canada. Based on persons of working age, 15 years and over. Statistics Canada must be credited when data from this report is used.

\*\* Monthly municipal rates are reported as 3 month moving averages. All others are reported monthly.

Data for the County of Brant is not reported separately by Stats Canada. Prepared by the City of Brantford's Economic Development Department. Available at [advantagebrantford.ca](http://advantagebrantford.ca)



\* Source: Stats Canada. Based on persons of working age, 15 years and over. **Statistics Canada must be credited when data from this report is used.**

\*\* Monthly municipal rates are reported as 3 month moving averages. All others are reported monthly.

Data for the County of Brant is not reported separately by Stats Canada. Prepared by the City of Brantford's Economic Development Department. Available at [advantagebrantford.ca](http://advantagebrantford.ca)