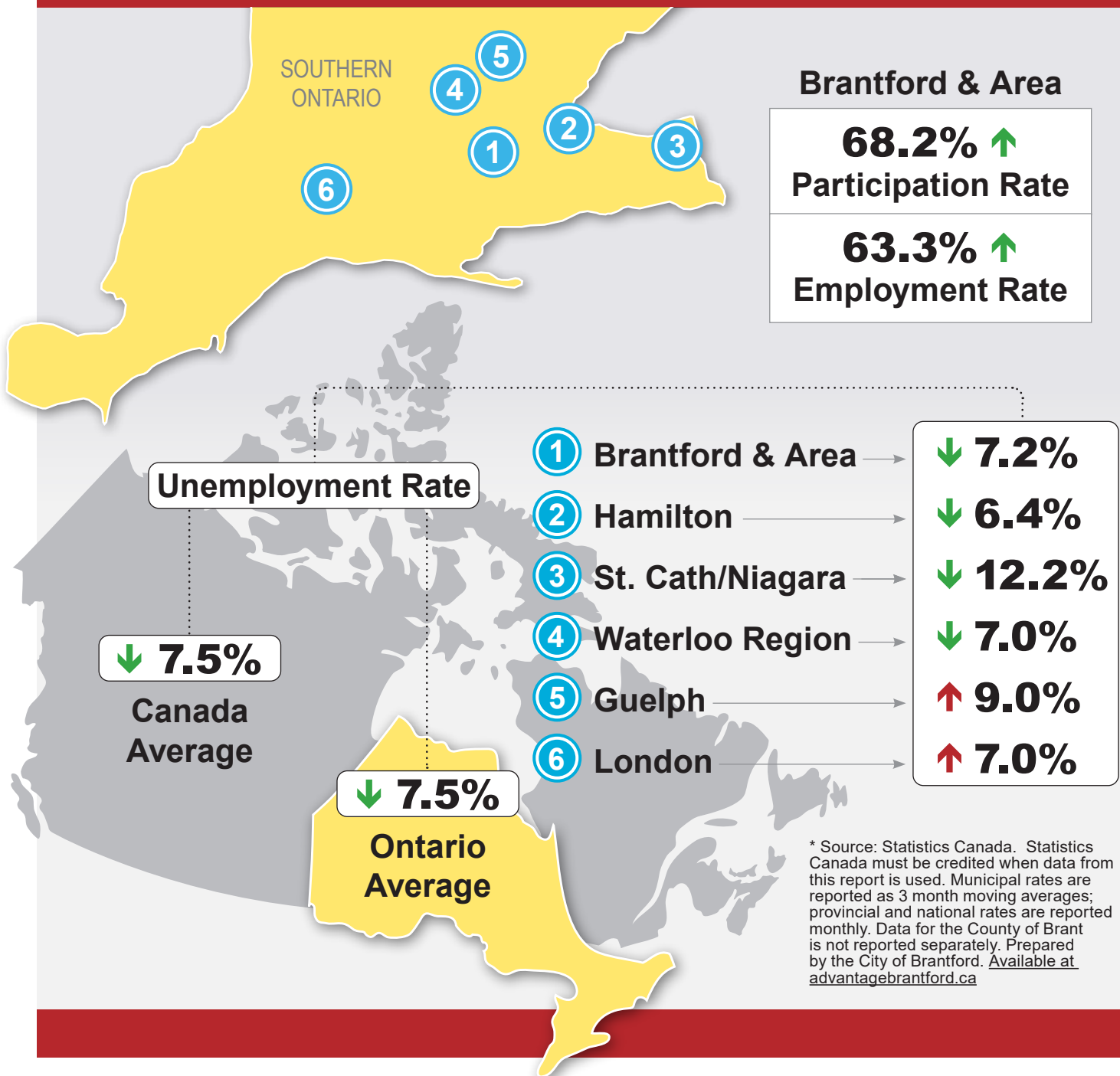
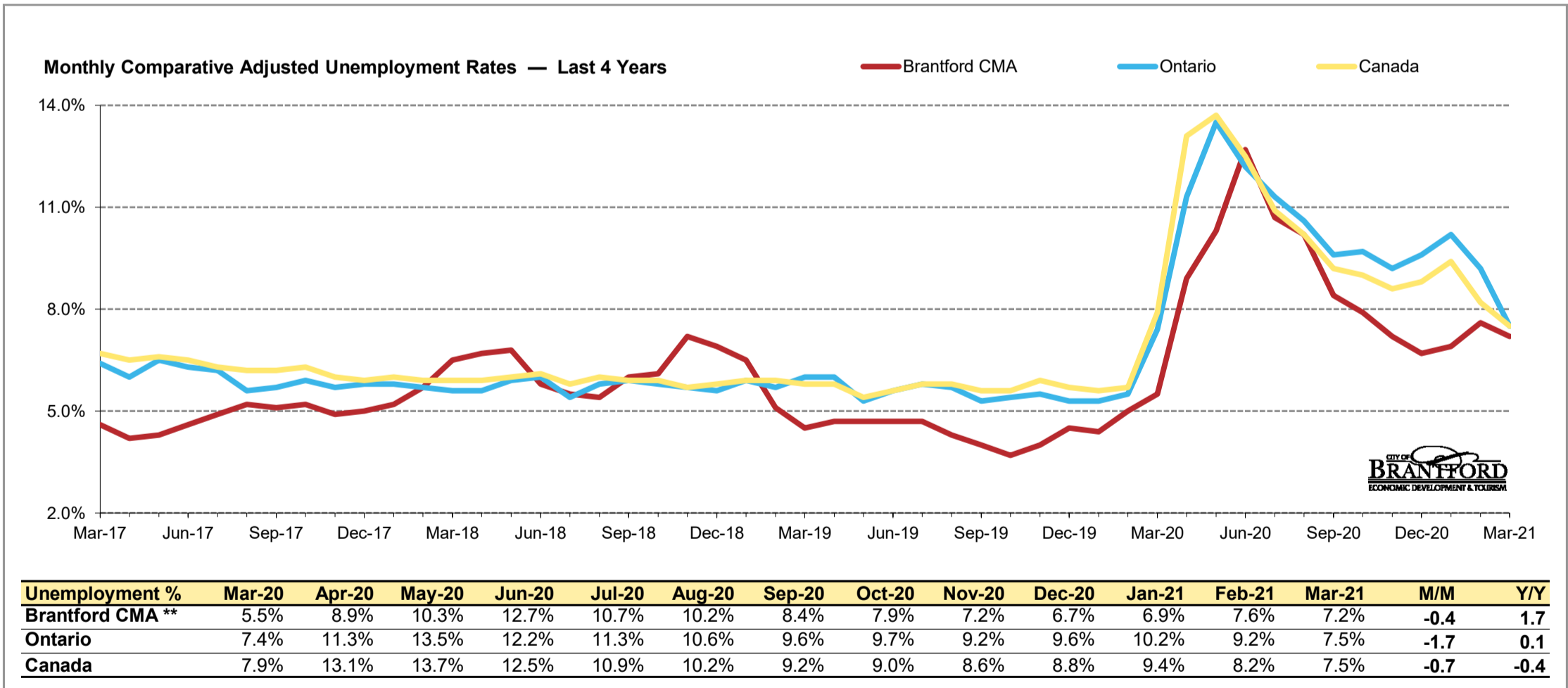
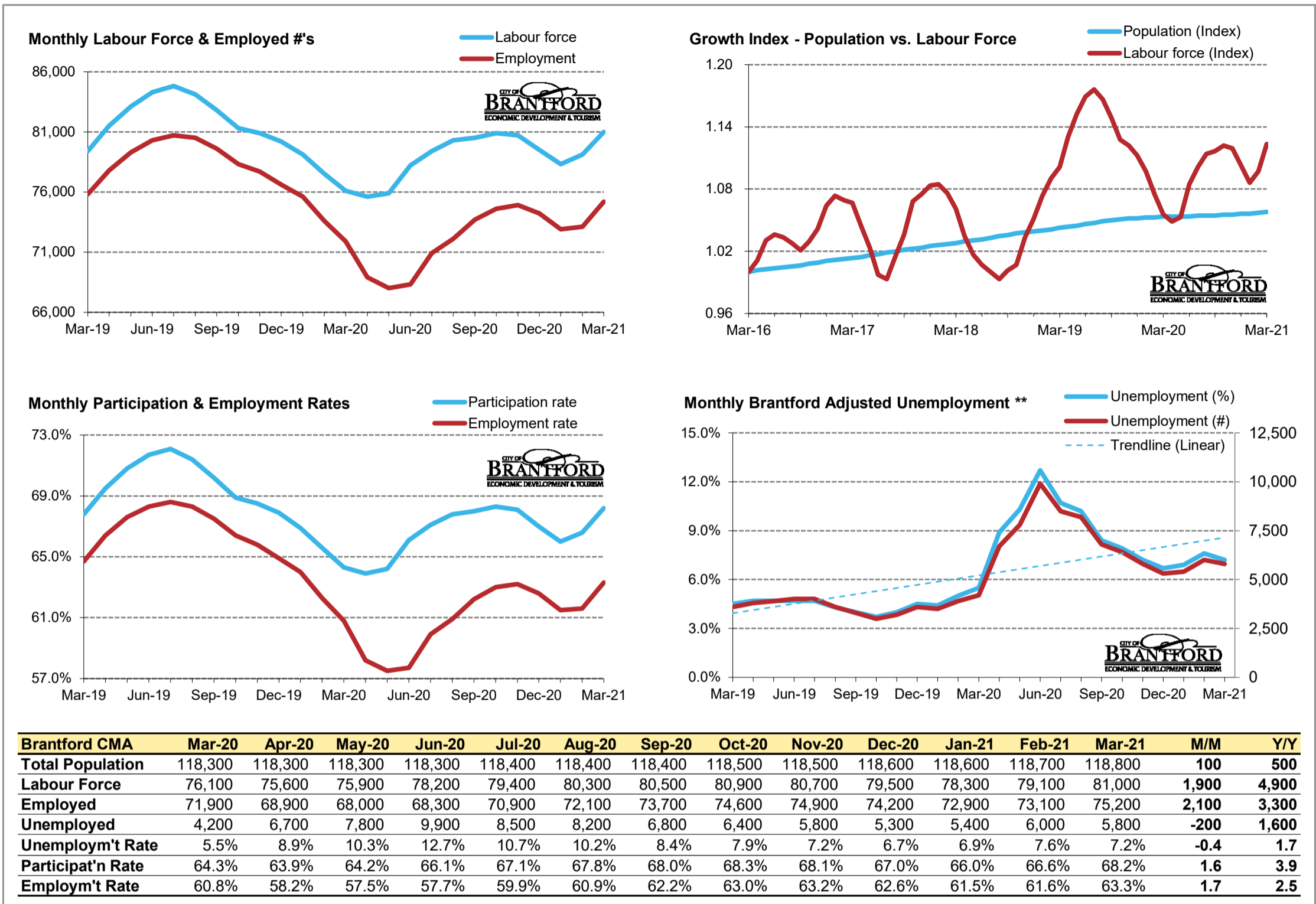




MAR 2021

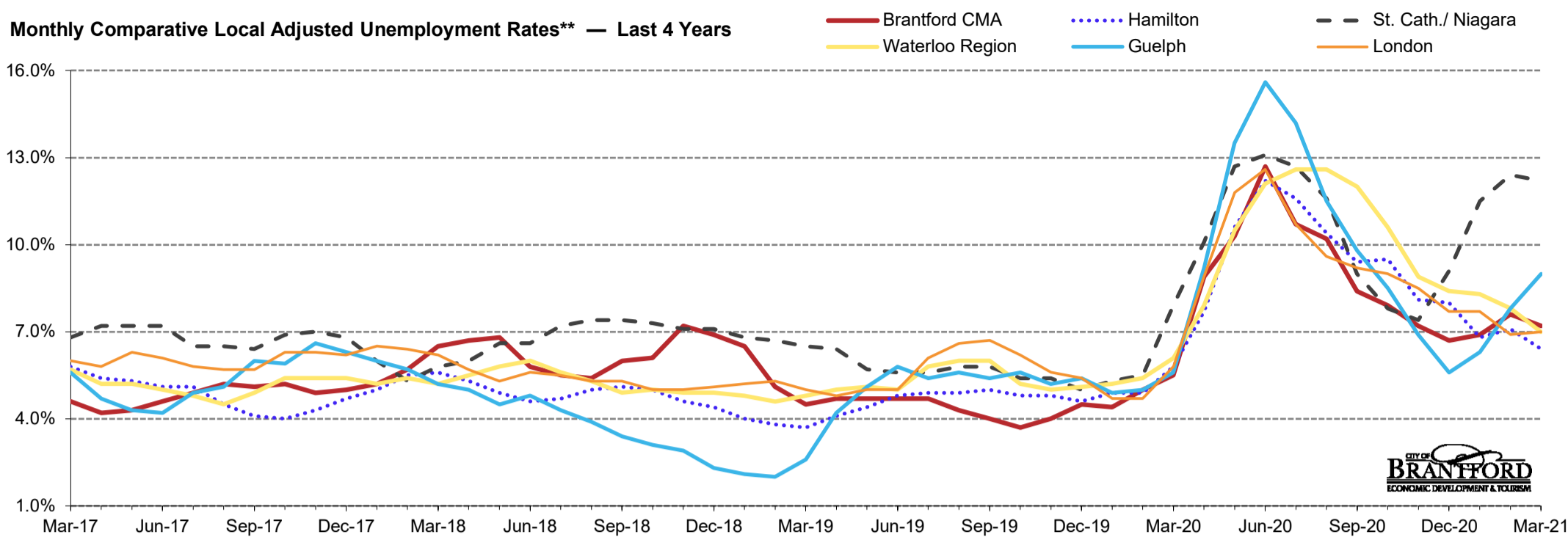
Local Labour Market Report*





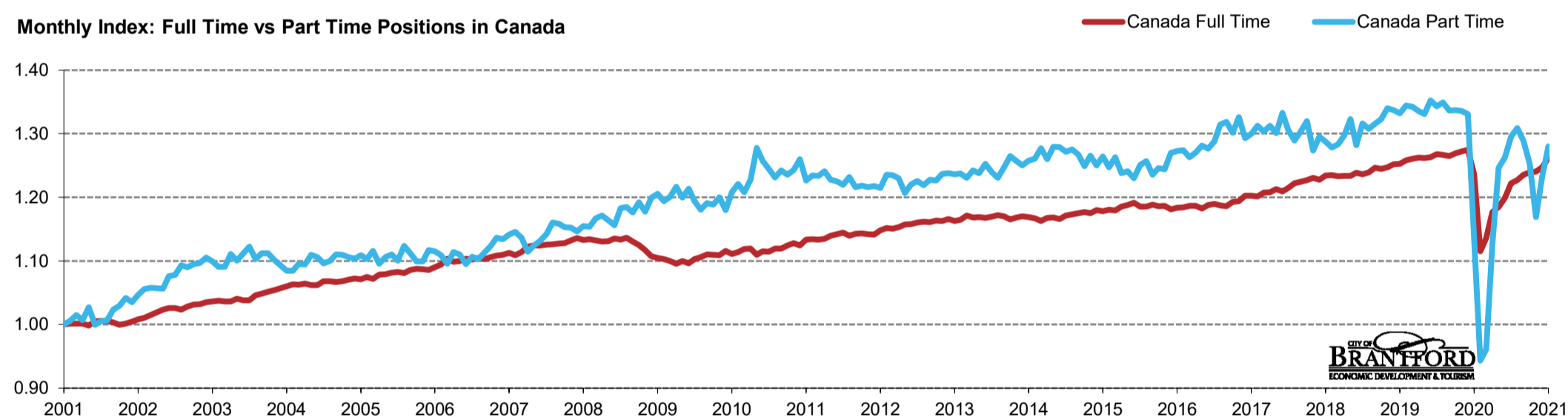
* Source: StatsCan Tables 14-10-0380-01, 14-10-0287-01. Based on persons of working age, 15 years +. Statistics Canada must be credited when data from this report is used.
 ** Monthly municipal rates are reported as 3 month moving averages. All others are reported monthly.
 Data for the County of Brant is not reported separately by Stats Canada. Prepared by the City of Brantford's Economic Development Department. Available at advantagebrantford.ca

Monthly Comparative Local Adjusted Unemployment Rates** — Last 4 Years

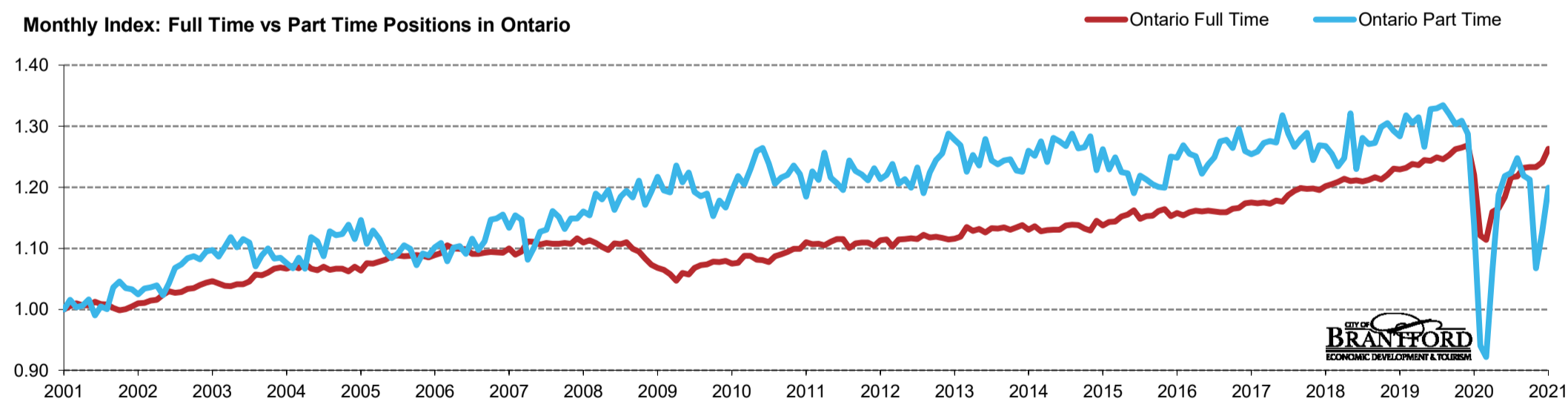


Unemployment %	Mar-20	Apr-20	May-20	Jun-20	Jul-20	Aug-20	Sep-20	Oct-20	Nov-20	Dec-20	Jan-21	Feb-21	Mar-21	M/M	Y/Y
Brantford CMA	5.5%	8.9%	10.3%	12.7%	10.7%	10.2%	8.4%	7.9%	7.2%	6.7%	6.9%	7.6%	7.2%	-0.4	1.7
Hamilton	5.8%	7.7%	10.6%	12.2%	11.6%	10.4%	9.4%	9.5%	8.1%	8.0%	6.8%	7.1%	6.4%	-0.7	0.6
St. Cath./Niagara	7.9%	10.1%	12.7%	13.1%	12.7%	11.6%	9.0%	7.8%	7.4%	9.1%	11.5%	12.4%	12.2%	-0.2	4.3
Waterloo Region	6.1%	7.9%	10.5%	12.1%	12.6%	12.6%	12.0%	10.6%	8.9%	8.4%	8.3%	7.8%	7.0%	-0.8	0.9
Guelph	5.6%	9.2%	13.5%	15.6%	14.2%	11.5%	9.8%	8.5%	6.9%	5.6%	6.3%	7.8%	9.0%	1.2	3.4
London	5.8%	8.9%	11.8%	12.6%	10.7%	9.6%	9.2%	9.0%	8.5%	7.7%	7.7%	6.9%	7.0%	0.1	1.2

Monthly Index: Full Time vs Part Time Positions in Canada



Monthly Index: Full Time vs Part Time Positions in Ontario

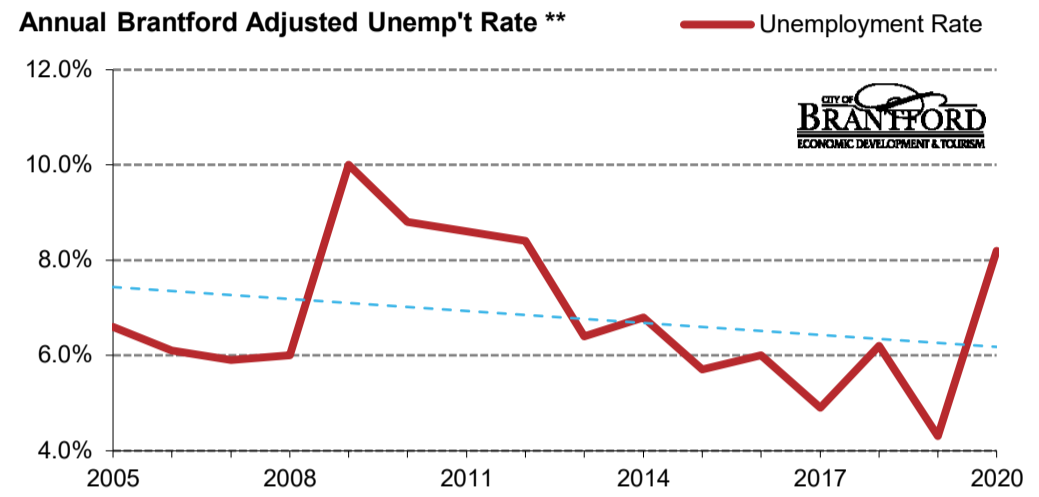
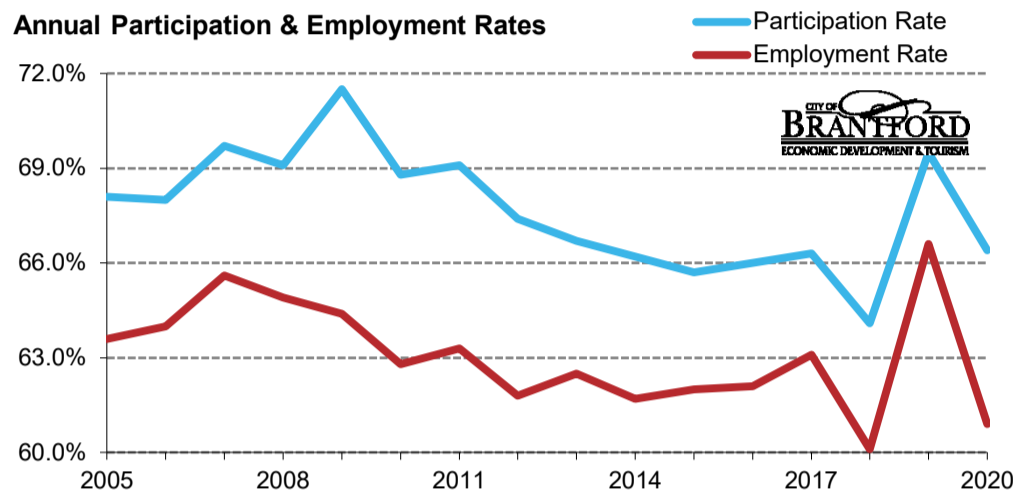
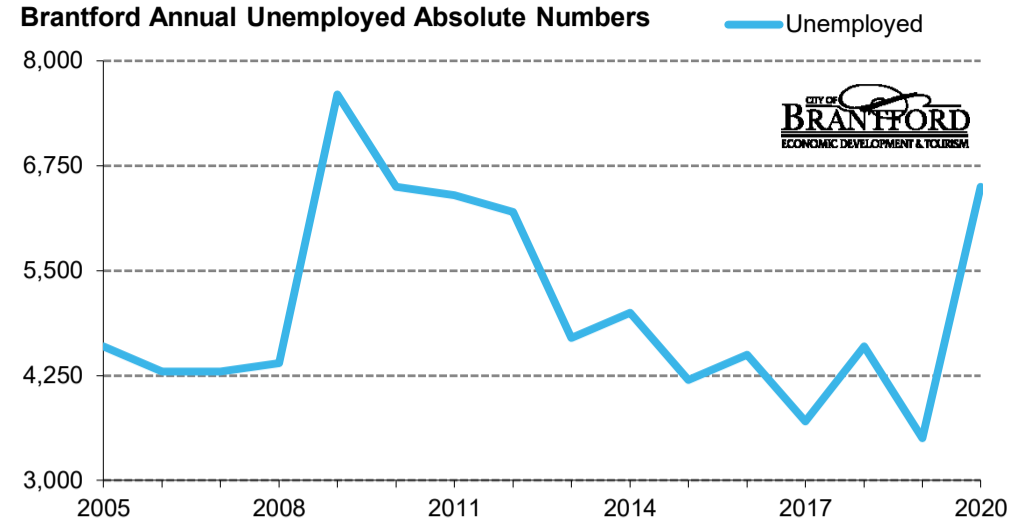
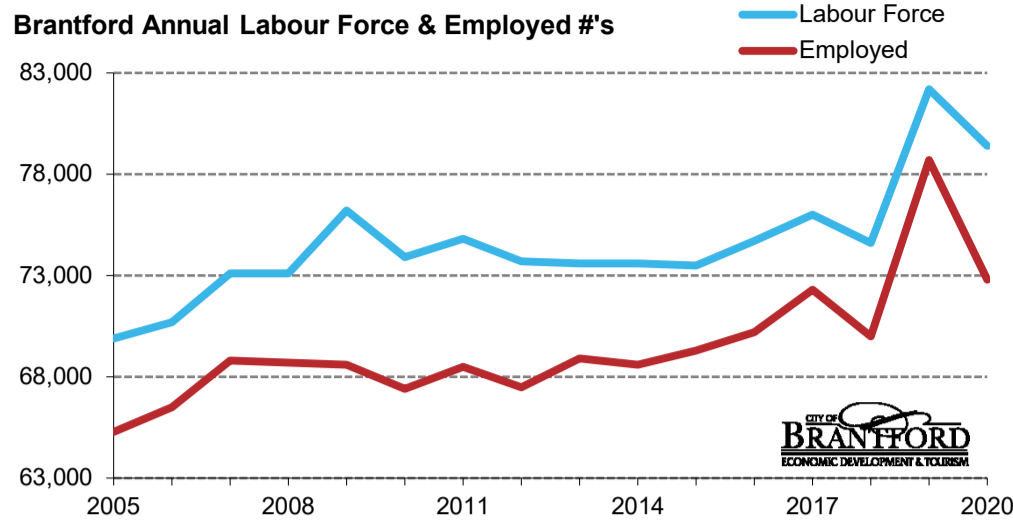


FT vs PT Positions	Mar-20	Apr-20	May-20	Jun-20	Jul-20	Aug-20	Sep-20	Oct-20	Nov-20	Dec-20	Jan-21	Feb-21	Mar-21	% M/M	% Y/Y
Canada FT (000's)	15,086.2	13,606.6	13,861.6	14,359.5	14,454.1	14,626.4	14,909.2	14,967.3	15,077.0	15,119.7	15,132.3	15,220.5	15,395.9	1.2	2.1
Canada PT (000's)	3,047.6	2,535.0	2,582.4	3,026.2	3,348.4	3,390.0	3,479.3	3,515.6	3,460.5	3,365.1	3,139.7	3,310.7	3,438.5	3.9	12.8
Canada FT %	83.2%	84.3%	84.3%	82.6%	81.2%	81.2%	81.1%	81.0%	81.3%	81.8%	82.8%	82.1%	81.7%		
Canada PT %	16.8%	15.7%	15.7%	17.4%	18.8%	18.8%	18.9%	19.0%	18.7%	18.2%	17.2%	17.9%	18.3%		
Ontario FT (000's)	5,905.2	5,423.2	5,389.6	5,610.3	5,638.7	5,728.6	5,885.4	5,891.9	5,959.6	5,966.8	5,965.9	6,003.9	6,110.2	1.8	3.5
Ontario PT (000's)	1,193.0	986.7	966.8	1,115.3	1,245.8	1,278.2	1,283.4	1,308.7	1,278.7	1,272.3	1,119.6	1,181.9	1,257.9	6.4	5.4
Ontario FT %	83.2%	84.6%	84.8%	83.4%	81.9%	81.8%	82.1%	81.8%	82.3%	82.4%	84.2%	83.6%	82.9%		
Ontario PT %	16.8%	15.4%	15.2%	16.6%	18.1%	18.2%	17.9%	18.2%	17.7%	17.6%	15.8%	16.4%	17.1%		

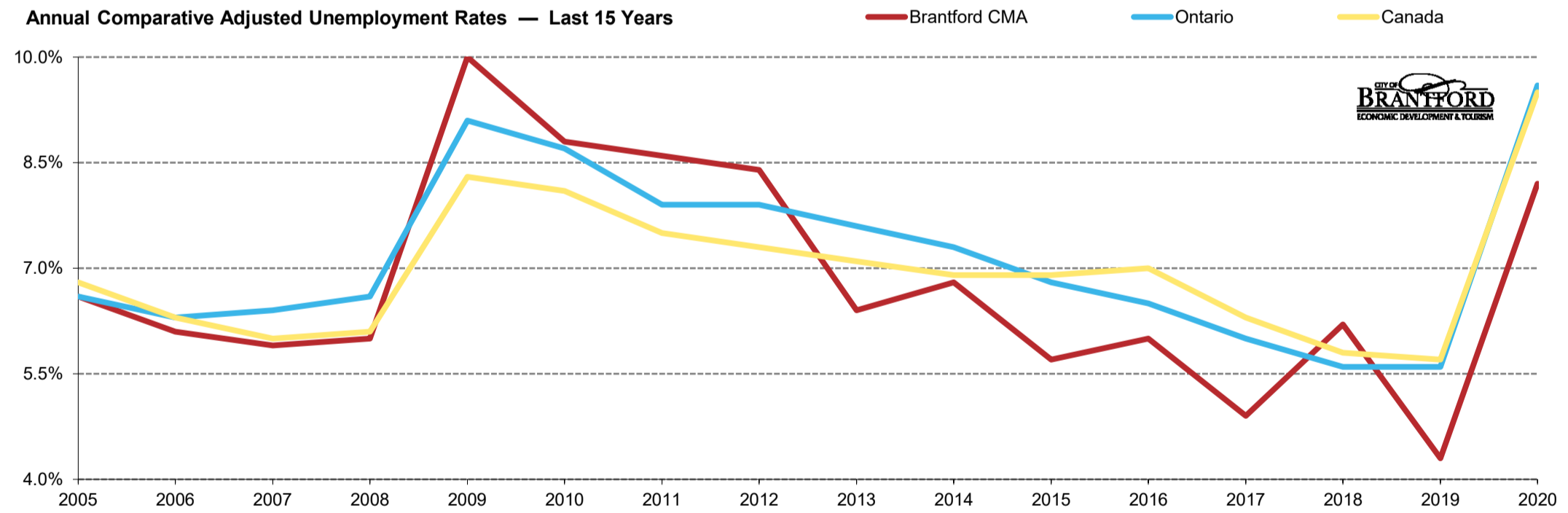
* Source: StatsCan Tables 14-10-0380-01, 14-10-0287-01. Based on persons of working age, 15 years +. Statistics Canada must be credited when data from this report is used.

** Monthly municipal rates are reported as 3 month moving averages. All others are reported monthly.

Data for the County of Brant is not reported separately by Stats Canada. Prepared by the City of Brantford's Economic Development Department. Available at advantagebrantford.ca

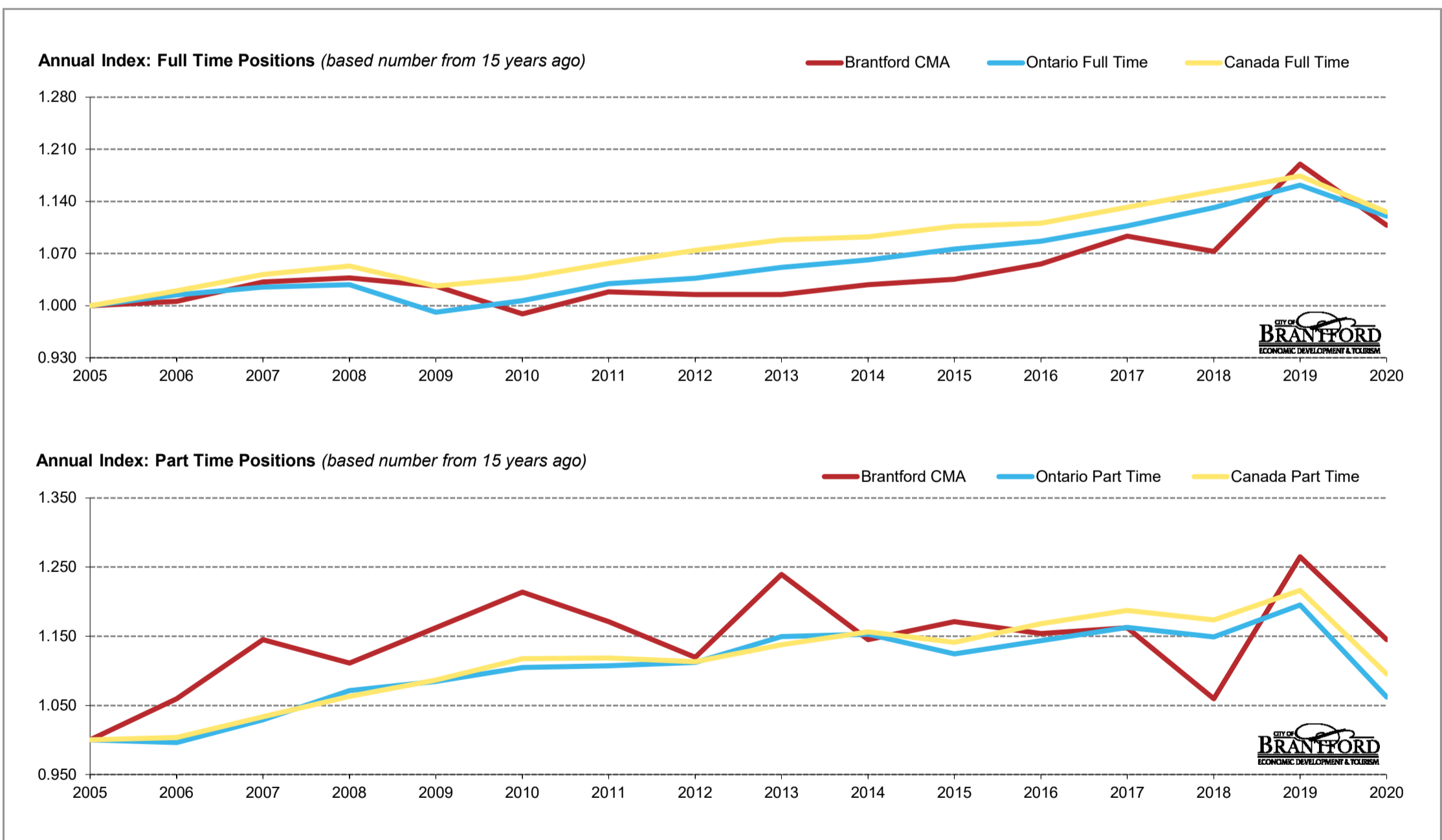
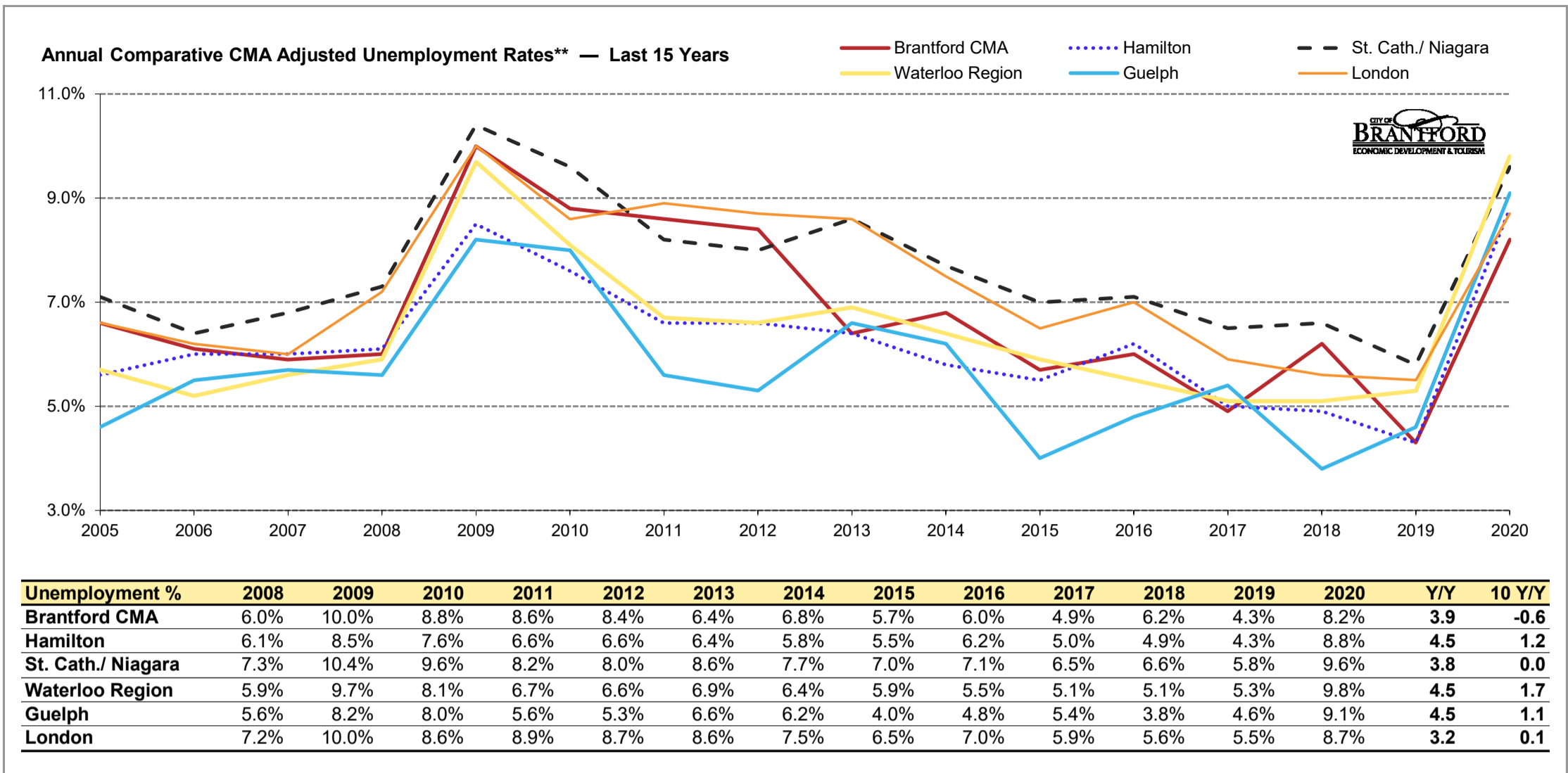


Brantford CMA	2008	2009	2010	2011	2012	2013	2014	2015	2016	2017	2018	2019	2020	Y/Y	10 Y/Y
Total Population	105,800	106,500	107,400	108,300	109,300	110,300	111,100	111,800	113,100	114,600	116,400	118,200	119,600	1,400	12,200
Labour Force	73,100	76,200	73,900	74,800	73,700	73,600	73,600	73,500	74,700	76,000	74,600	82,200	79,400	-2,800	5,500
Employed	68,700	68,600	67,400	68,500	67,500	68,900	68,600	69,300	70,200	72,300	70,000	78,700	72,800	-5,900	5,400
Unemployed	4,400	7,600	6,500	6,400	6,200	4,700	5,000	4,200	4,500	3,700	4,600	3,500	6,500	3,000	0
Unemployment Rate	6.0%	10.0%	8.8%	8.6%	8.4%	6.4%	6.8%	5.7%	6.0%	4.9%	6.2%	4.3%	8.2%	3.9	-0.6
Participat'n Rate	69.1%	71.5%	68.8%	69.1%	67.4%	66.7%	66.2%	65.7%	66.0%	66.3%	64.1%	69.5%	66.4%	-3.1	-2.4
Employment Rate	64.9%	64.4%	62.8%	63.3%	61.8%	62.5%	61.7%	62.0%	62.1%	63.1%	60.1%	66.6%	60.9%	-5.7	-1.9



Unemployment %	2008	2009	2010	2011	2012	2013	2014	2015	2016	2017	2018	2019	2020	Y/Y	10 Y/Y
Brantford CMA **	6.0%	10.0%	8.8%	8.6%	8.4%	6.4%	6.8%	5.7%	6.0%	4.9%	6.2%	4.3%	8.2%	3.9	-0.6
Ontario	6.6%	9.1%	8.7%	7.9%	7.9%	7.6%	7.3%	6.8%	6.5%	6.0%	5.6%	5.6%	9.6%	4.0	0.9
Canada	6.1%	8.3%	8.1%	7.5%	7.3%	7.1%	6.9%	6.9%	7.0%	6.3%	5.8%	5.7%	9.5%	3.8	1.4

* Source: StatsCan Tables 14-10-0090-01, 14-10-0018-01, 14-10-0096-01. Based on persons of working age, 15 years+. Statistics Canada must be credited when this data is used.
 ** Monthly municipal rates are reported as 3 month moving averages. All others are reported monthly.
 Data for the County of Brant is not reported separately by Stats Canada. Prepared by the City of Brantford's Economic Development Department. Available at advantagebrantford.ca

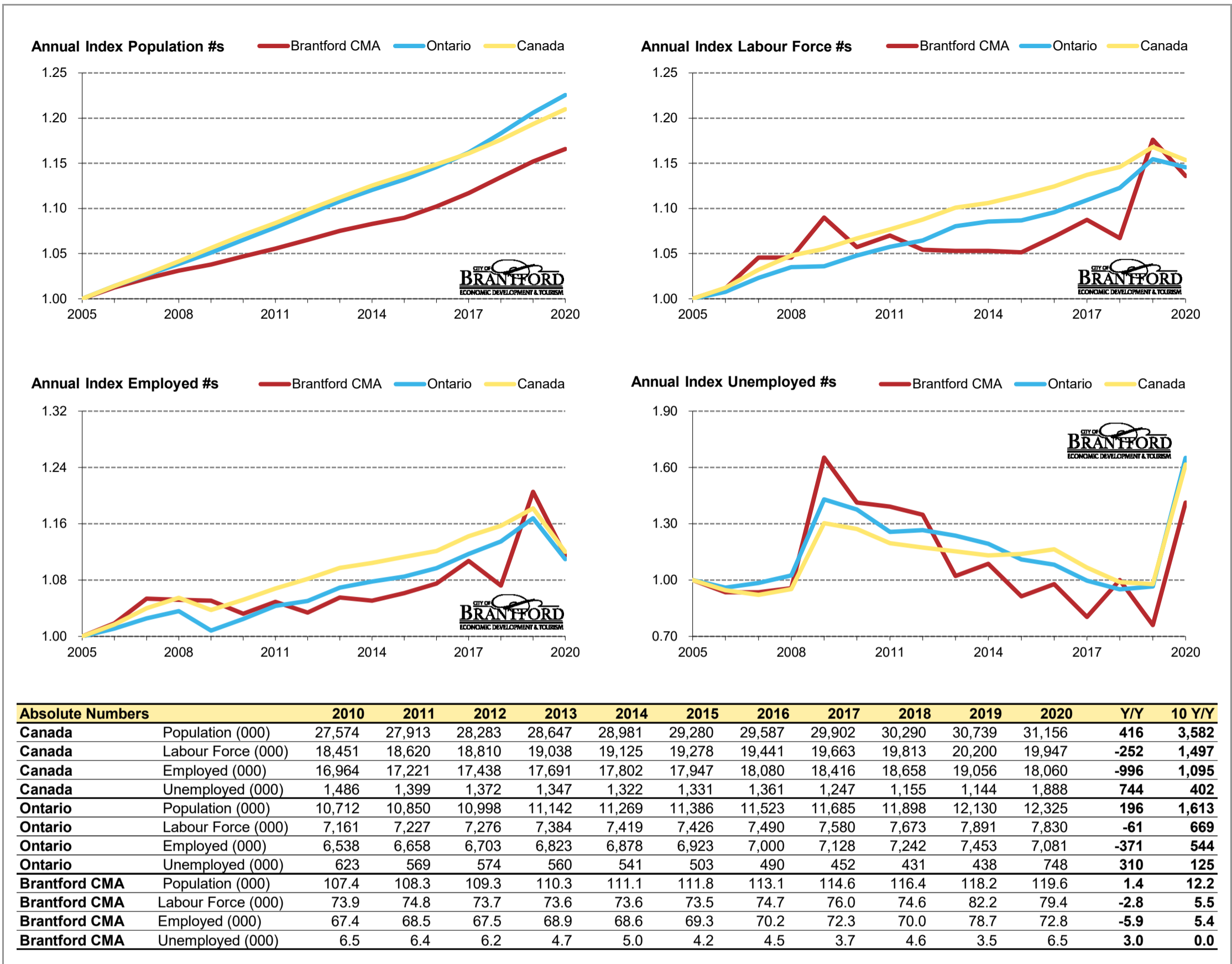


FT vs PT Positions	2008	2009	2010	2011	2012	2013	2014	2015	2016	2017	2018	2019	2020	Y/Y %	10 Y/Y %
Canada FT (000)	13,854.7	13,502.6	13,647.2	13,900.9	14,133.2	14,314.2	14,369.9	14,559.3	14,612.2	14,892.8	15,174.8	15,445.1	14,808.6	-4.1	8.5
Canada PT (000)	3,155.5	3,225.0	3,317.1	3,320.2	3,304.7	3,376.9	3,432.3	3,387.3	3,467.7	3,523.6	3,482.7	3,610.6	3,250.9	-10.0	-2.0
Canada FT %	81.4%	80.7%	80.4%	80.7%	81.0%	80.9%	80.7%	81.1%	80.8%	80.9%	81.3%	81.1%	82.0%		
Canada PT %	18.6%	19.3%	19.6%	19.3%	19.0%	19.1%	19.3%	18.9%	19.2%	19.1%	18.7%	18.9%	18.0%		
Ontario FT (000)	5,366.8	5,174.0	5,256.1	5,373.5	5,412.0	5,489.5	5,540.0	5,618.2	5,672.6	5,778.7	5,909.0	6,065.8	5,848.8	-3.6	11.3
Ontario PT (000)	1,243.5	1,258.7	1,281.8	1,284.8	1,290.6	1,334.0	1,337.9	1,305.0	1,327.0	1,349.3	1,333.4	1,386.8	1,232.6	-11.1	-3.8
Ontario FT %	81.2%	80.4%	80.4%	80.7%	80.7%	80.4%	80.5%	81.2%	81.0%	81.1%	81.6%	81.4%	82.6%		
Ontario PT %	18.8%	19.6%	19.6%	19.3%	19.3%	19.6%	19.5%	18.8%	19.0%	18.9%	18.4%	18.6%	17.4%		
Brantford FT (000)	55.7	55.1	53.1	54.7	54.5	54.5	55.2	55.6	56.7	58.7	57.6	63.9	59.5	-6.9	12.1
Brantford PT (000)	13.0	13.6	14.2	13.7	13.1	14.5	13.4	13.7	13.5	13.6	12.4	14.8	13.4	-9.5	-5.6
Brantford FT %	81.1%	80.2%	78.9%	80.0%	80.6%	79.0%	80.5%	80.2%	80.8%	81.2%	82.3%	81.2%	81.6%		
Brantford PT %	18.9%	19.8%	21.1%	20.0%	19.4%	21.0%	19.5%	19.8%	19.2%	18.8%	17.7%	18.8%	18.4%		

* Source: StatsCan Tables 14-10-0090-01, 14-10-0018-01, 14-10-0096-01. Based on persons of working age, 15 years+. **Statistics Canada must be credited when this data is used.**

** Monthly municipal rates are reported as 3 month moving averages. All others are reported monthly.

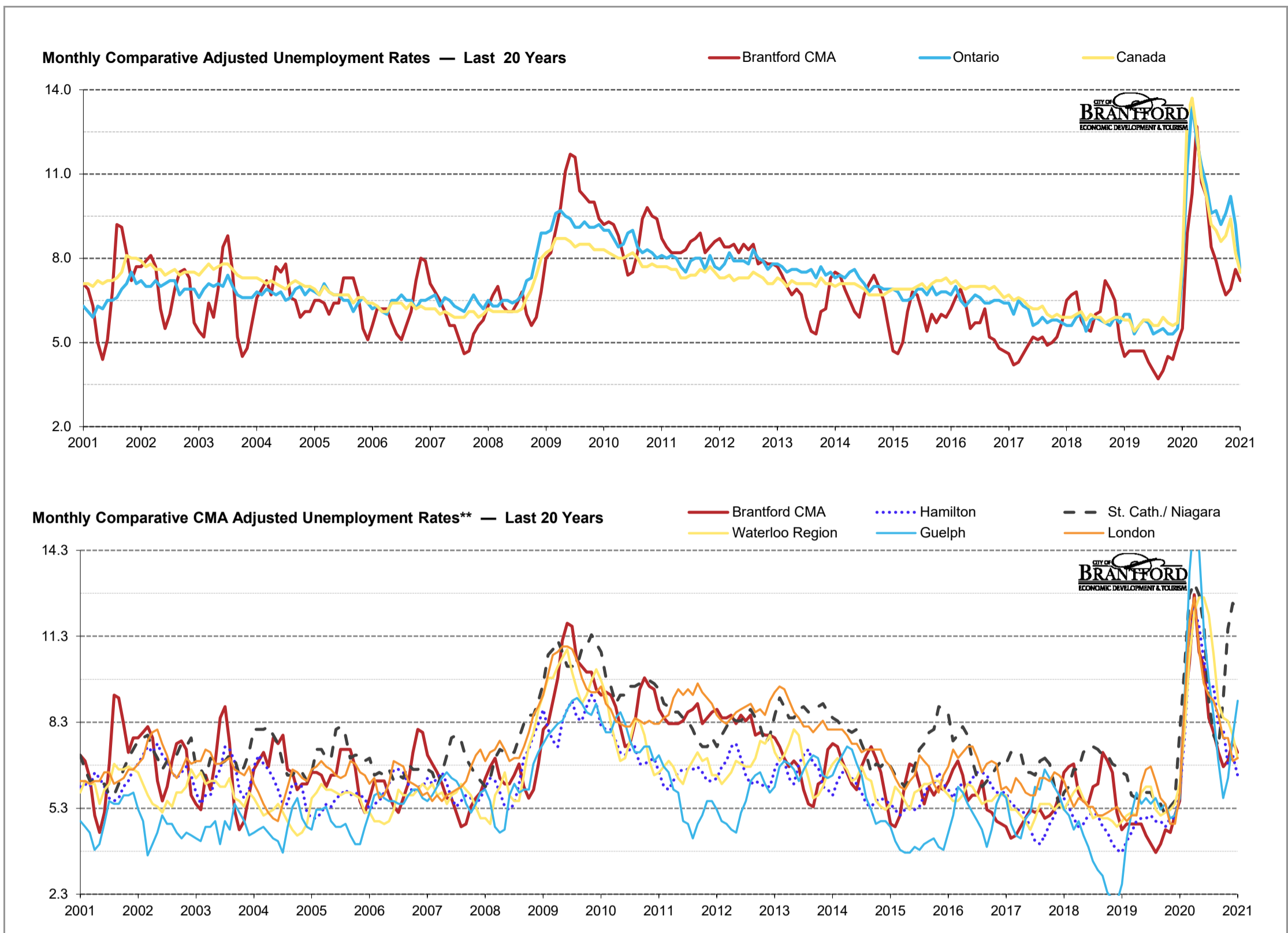
Data for the County of Brant is not reported separately by Stats Canada. Prepared by the City of Brantford's Economic Development Department. Available at advantagebrantford.ca



* Source: StatsCan Tables 14-10-0090-01, 14-10-0018-01, 14-10-0096-01. Based on persons of working age, 15 years+. Statistics Canada must be credited when this data is used.

** Monthly municipal rates are reported as 3 month moving averages. All others are reported monthly.

Data for the County of Brant is not reported separately by Stats Canada. Prepared by the City of Brantford's Economic Development Department. Available at advantagebrantford.ca



* Source: StatsCan Tables 14-10-0294-01, 14-10-0380-01, 14-10-0287-01. Based on persons of working age, 15 years +. **Statistics Canada must be credited when this data is used.**

** Monthly municipal rates are reported as 3 month moving averages. All others are reported monthly.

Data for the County of Brant is not reported separately by Stats Canada. Prepared by the City of Brantford's Economic Development Department. Available at advantagebrantford.ca