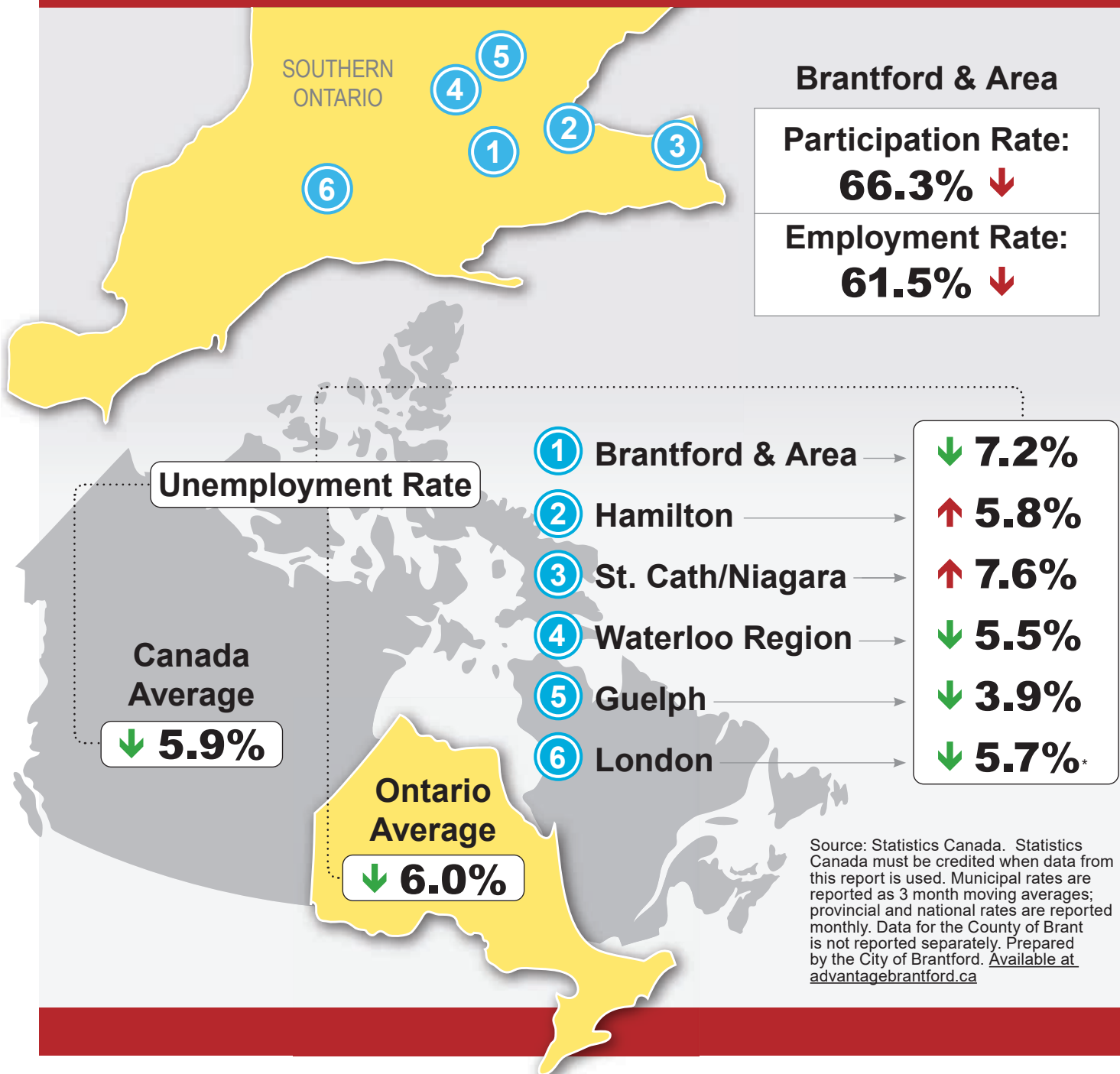
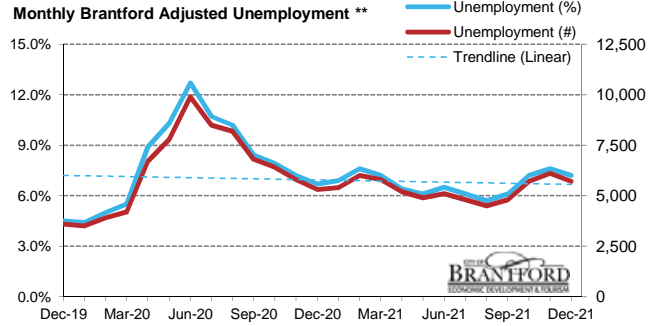
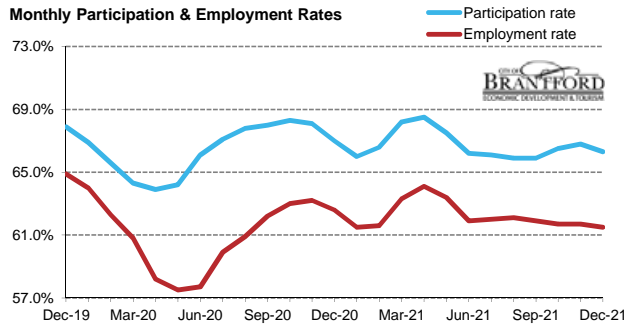
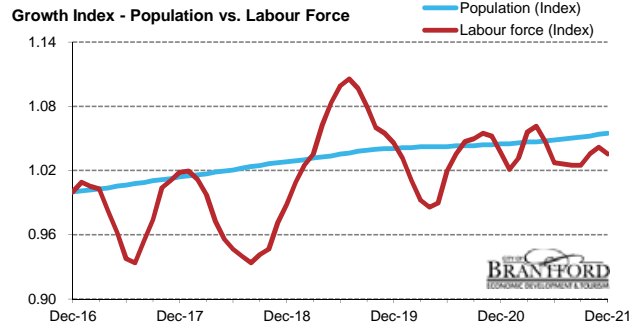
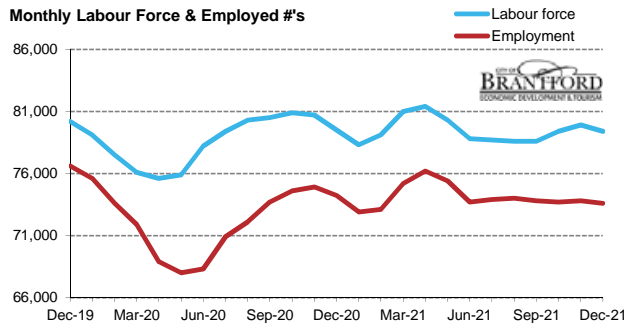




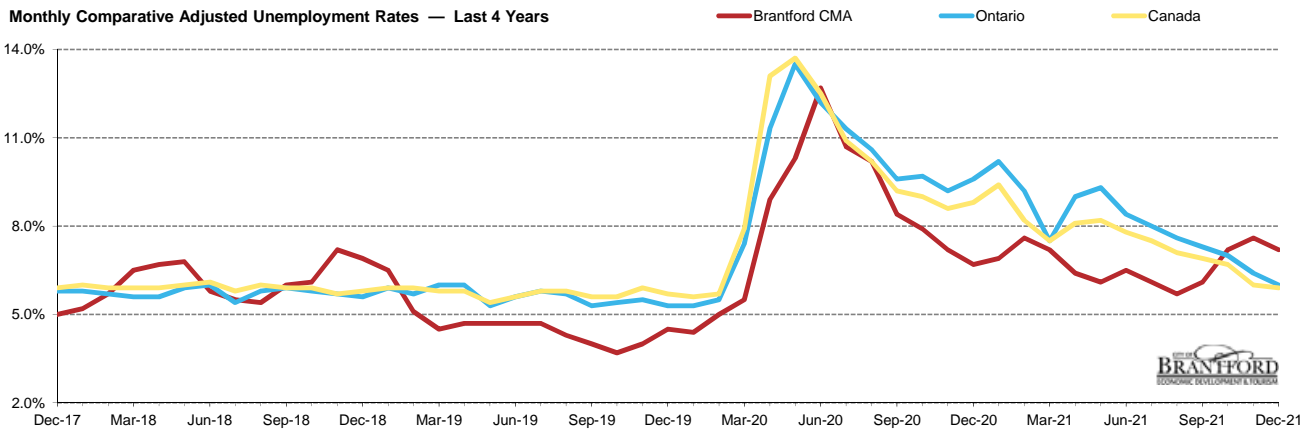
Local Labour Market Report*





Brantford CMA	Dec-20	Jan-21	Feb-21	Mar-21	Apr-21	May-21	Jun-21	Jul-21	Aug-21	Sep-21	Oct-21	Nov-21	Dec-21	M/M	Y/Y
Total Population	118,600	118,600	118,700	118,800	118,800	118,900	119,000	119,100	119,200	119,300	119,400	119,600	119,700	100	1,100
Labour Force	79,500	78,300	79,100	81,000	81,400	80,300	78,800	78,700	78,600	78,600	79,400	79,900	79,400	-500	-100
Employed	74,200	72,900	73,100	75,200	76,200	75,400	73,700	73,900	74,000	73,800	73,700	73,800	73,600	-200	-600
Unemployed	5,300	5,400	6,000	5,800	5,200	4,900	5,100	4,800	4,500	4,800	5,700	6,100	5,700	-400	400
Unemploy't Rate	6.7%	6.9%	7.6%	7.2%	6.4%	6.1%	6.5%	6.1%	5.7%	6.1%	7.2%	7.6%	7.2%	-0.4	0.5
Participat'n Rate	67.0%	66.0%	66.6%	68.2%	68.5%	67.5%	66.2%	66.1%	65.9%	65.9%	66.5%	66.8%	66.3%	-0.5	-0.7
Employ'm't Rate	62.6%	61.5%	61.6%	63.3%	64.1%	63.4%	61.9%	62.0%	62.1%	61.9%	61.7%	61.7%	61.5%	-0.2	-1.1

Monthly Comparative Adjusted Unemployment Rates — Last 4 Years



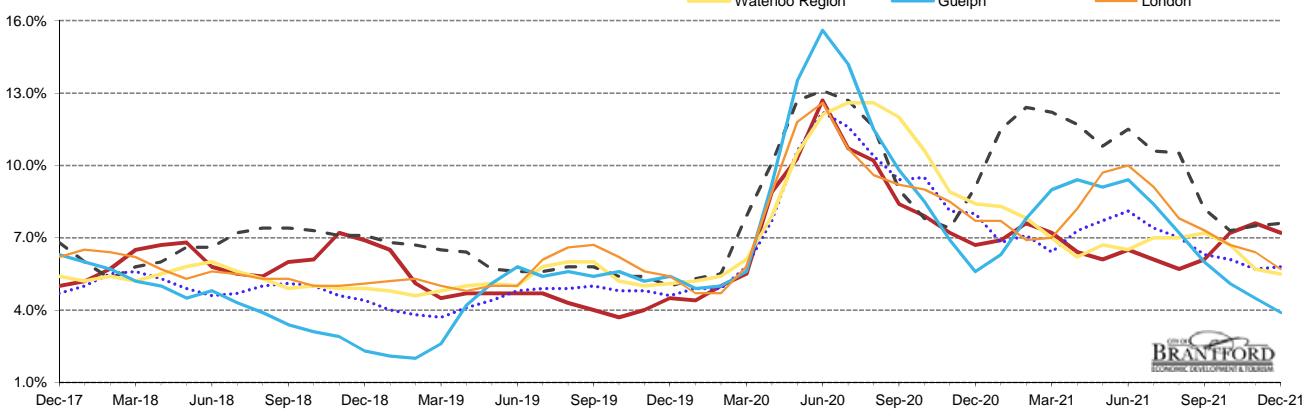
Unemployment %	Dec-20	Jan-21	Feb-21	Mar-21	Apr-21	May-21	Jun-21	Jul-21	Aug-21	Sep-21	Oct-21	Nov-21	Dec-21	M/M	Y/Y
Brantford CMA **	6.7%	6.9%	7.6%	7.2%	6.4%	6.1%	6.5%	6.1%	5.7%	6.1%	7.2%	7.6%	7.2%	-0.4	0.5
Ontario	9.6%	10.2%	9.2%	7.5%	9.0%	9.3%	8.4%	8.0%	7.6%	7.3%	7.0%	6.4%	6.0%	-0.4	-3.6
Canada	8.8%	9.4%	8.2%	7.5%	8.1%	8.2%	7.8%	7.5%	7.1%	6.9%	6.7%	6.0%	5.9%	-0.1	-2.9

* Source: StatsCan Tables 14-10-0380-01, 14-10-0287-01. Based on persons of working age, 15 years +. Statistics Canada must be credited when data from this report is used.

** Monthly municipal rates are reported as 3 month moving averages. All others are reported monthly.

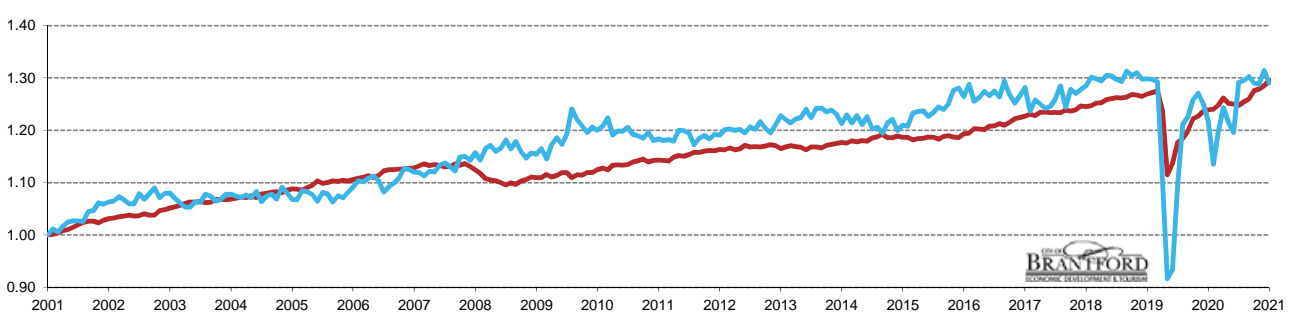
Data for the County of Brant is not reported separately by Stats Canada. Prepared by the City of Brantford's Economic Development Department. Available at advantagebrantford.ca

Monthly Comparative Local Adjusted Unemployment Rates** — Last 4 Years

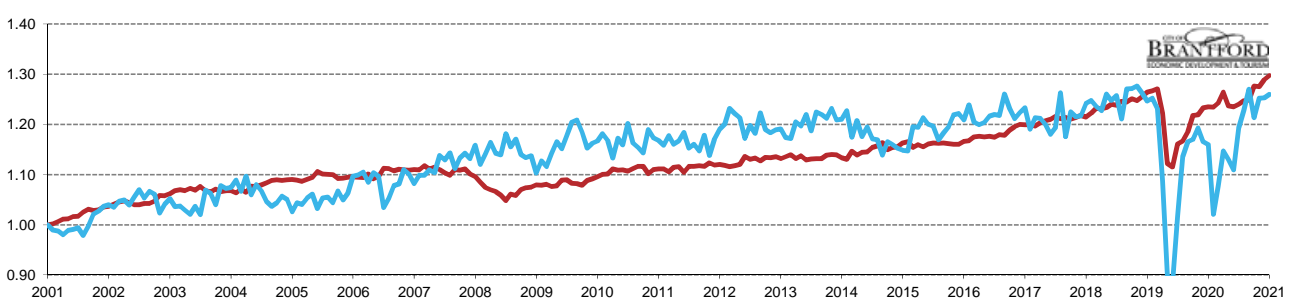


Unemployment %	Dec-20	Jan-21	Feb-21	Mar-21	Apr-21	May-21	Jun-21	Jul-21	Aug-21	Sep-21	Oct-21	Nov-21	Dec-21	M/M	Y/Y
Brantford CMA	6.7%	6.9%	7.6%	7.2%	6.4%	6.1%	6.5%	6.1%	5.7%	6.1%	7.2%	7.6%	7.2%	-0.4	0.5
Hamilton	8.0%	6.8%	7.1%	6.4%	7.3%	7.7%	8.1%	7.4%	7.0%	6.3%	6.1%	5.7%	5.8%	0.1	-2.2
St. Cath./Niagara	9.1%	11.5%	12.4%	12.2%	11.7%	10.8%	11.5%	10.6%	10.5%	8.2%	7.3%	7.5%	7.6%	0.1	-1.5
Waterloo Region	8.4%	8.3%	7.8%	7.0%	6.2%	6.7%	6.5%	7.0%	7.0%	7.2%	6.7%	5.7%	5.5%	-0.2	-2.9
Guelph	5.6%	6.3%	7.8%	9.0%	9.4%	9.1%	9.4%	8.4%	7.2%	6.0%	5.1%	4.5%	3.9%	-0.6	-1.7
London	7.7%	7.7%	6.9%	7.0%	8.2%	9.7%	10.0%	9.1%	7.8%	7.3%	6.7%	6.4%	5.7%	-0.7	-2.0

Monthly Index: Full Time vs Part Time Positions in Canada



Monthly Index: Full Time vs Part Time Positions in Ontario

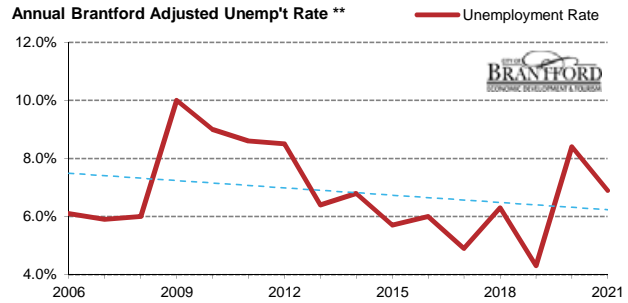
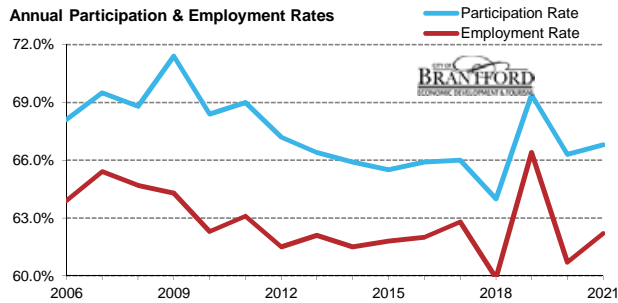
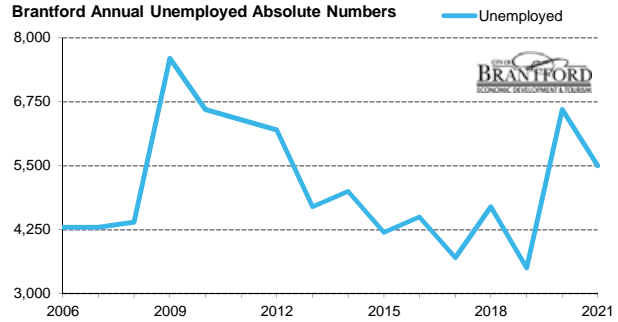
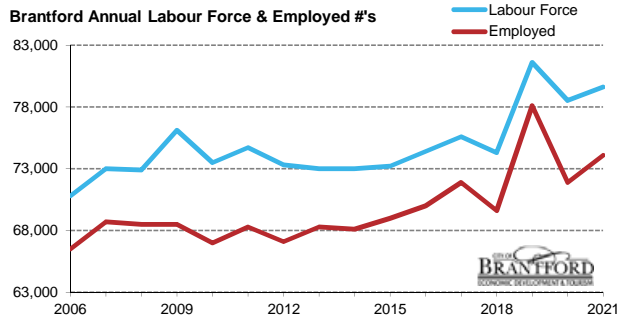


FT vs PT Positions	Dec-20	Jan-21	Feb-21	Mar-21	Apr-21	May-21	Jun-21	Jul-21	Aug-21	Sep-21	Oct-21	Nov-21	Dec-21	% M/M	% Y/Y
Canada FT (000's)	15,119.7	15,132.3	15,220.5	15,395.9	15,266.5	15,252.7	15,219.5	15,302.5	15,371.0	15,564.6	15,601.0	15,680.9	15,803.4	0.8	4.5
Canada PT (000's)	3,365.1	3,139.7	3,310.7	3,438.5	3,360.7	3,306.5	3,570.4	3,581.4	3,603.1	3,566.6	3,561.4	3,635.2	3,567.5	-1.9	6.0
Canada FT %	81.8%	82.8%	82.1%	81.7%	82.0%	82.2%	81.0%	81.0%	81.0%	81.4%	81.4%	81.2%	81.6%		
Canada PT %	18.2%	17.2%	17.9%	18.3%	18.0%	17.8%	19.0%	19.0%	19.0%	18.6%	18.6%	18.8%	18.4%		
Ontario FT (000's)	5,966.8	5,965.9	6,003.9	6,110.2	5,976.2	5,967.1	5,991.8	6,025.7	6,033.1	6,168.6	6,163.2	6,230.4	6,270.1	0.6	5.1
Ontario PT (000's)	1,272.3	1,119.6	1,181.9	1,257.9	1,239.2	1,216.7	1,308.9	1,347.4	1,393.1	1,331.2	1,373.5	1,374.3	1,381.7	0.5	8.6
Ontario FT %	82.4%	84.2%	83.6%	82.9%	82.8%	83.1%	82.1%	81.7%	81.2%	82.3%	81.8%	81.9%	81.9%		
Ontario PT %	17.6%	15.8%	16.4%	17.1%	17.2%	16.9%	17.9%	18.3%	18.8%	17.7%	18.2%	18.1%	18.1%		

* Source: StatsCan Tables 14-10-0380-01, 14-10-0287-01. Based on persons of working age, 15 years +. Statistics Canada must be credited when data from this report is used.

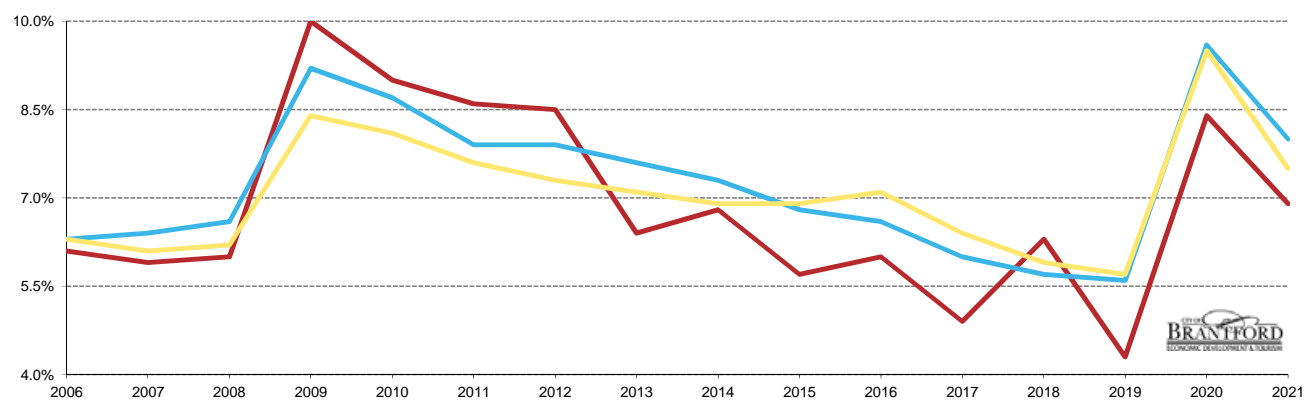
** Monthly municipal rates are reported as 3 month moving averages. All others are reported monthly.

Data for the County of Brant is not reported separately by Stats Canada. Prepared by the City of Brantford's Economic Development Department. Available at advantagebrantford.ca



Brantford CMA	2009	2010	2011	2012	2013	2014	2015	2016	2017	2018	2019	2020	2021	Y/Y	10 Y/Y
Total Population	106,600	107,500	108,300	109,100	109,900	110,800	111,700	112,900	114,500	116,100	117,600	118,400	119,200	800	10,900
Labour Force	76,100	73,500	74,700	73,300	73,000	73,000	73,200	74,400	75,600	74,300	81,600	78,500	79,600	1,100	4,900
Employed	68,500	67,000	68,300	67,100	68,300	68,100	69,000	70,000	71,900	69,600	78,100	71,900	74,100	2,200	5,800
Unemployed	7,600	6,600	6,400	6,200	4,700	5,000	4,200	4,500	3,700	4,700	3,500	6,600	5,500	-1,100	-900
Unemployment Rate	10.0%	9.0%	8.6%	8.5%	6.4%	6.8%	5.7%	6.0%	4.9%	6.3%	4.3%	8.4%	6.9%	-1.5	-1.7
Participat'n Rate	71.4%	68.4%	69.0%	67.2%	66.4%	65.9%	65.5%	65.9%	66.0%	64.0%	69.4%	66.3%	66.8%	0.5	-2.2
Employment Rate	64.3%	62.3%	63.1%	61.5%	62.1%	61.5%	61.8%	62.0%	62.8%	59.9%	66.4%	60.7%	62.2%	1.5	-0.9

Annual Comparative Adjusted Unemployment Rates — Last 15 Years

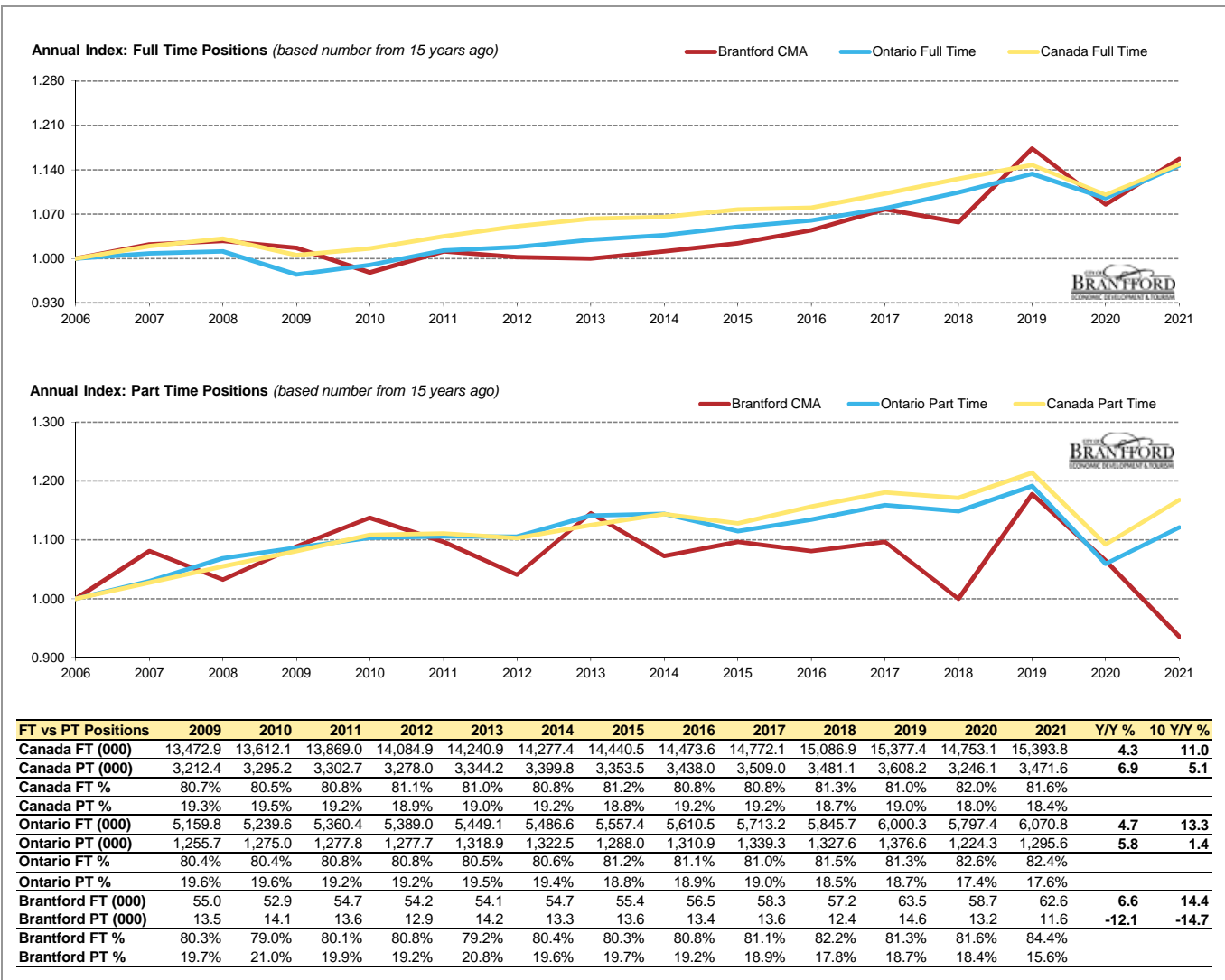
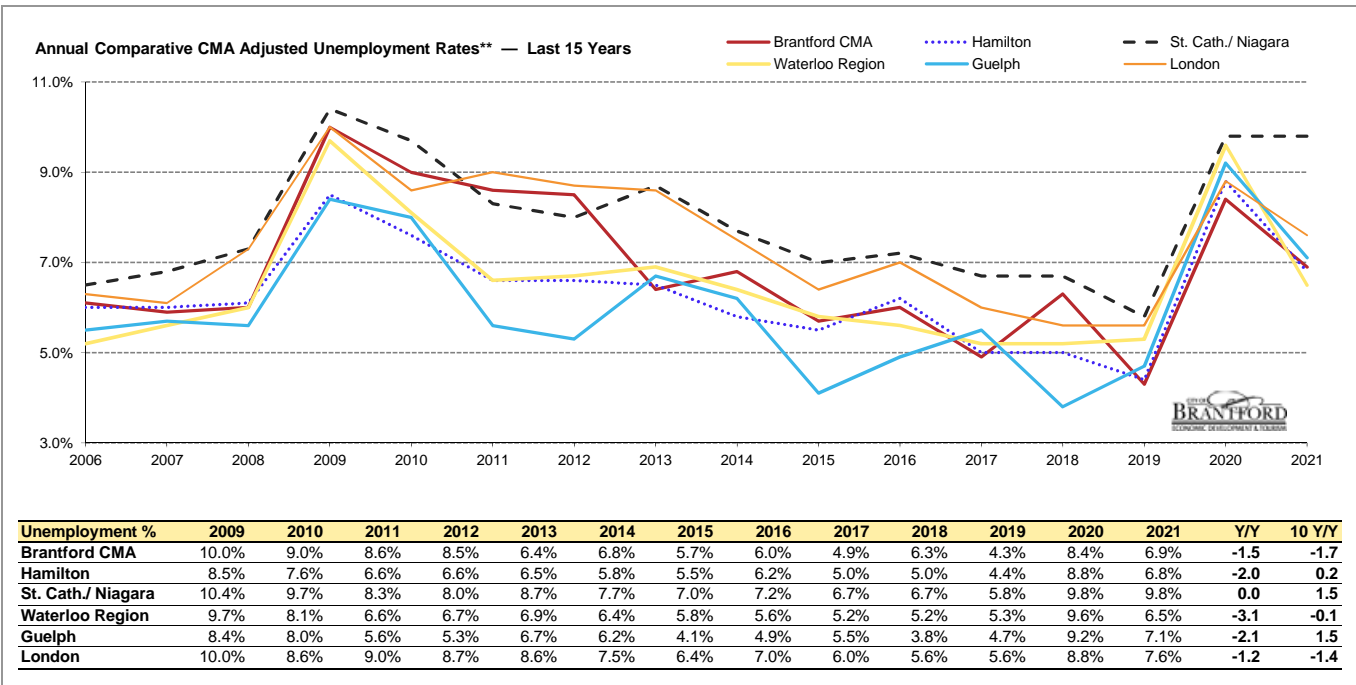


Unemployment %	2009	2010	2011	2012	2013	2014	2015	2016	2017	2018	2019	2020	2021	Y/Y	10 Y/Y
Brantford CMA **	10.0%	9.0%	8.6%	8.5%	6.4%	6.8%	5.7%	6.0%	4.9%	6.3%	4.3%	8.4%	6.9%	-1.5	-1.7
Ontario	9.2%	8.7%	7.9%	7.9%	7.6%	7.3%	6.8%	6.6%	6.0%	5.7%	5.6%	9.6%	8.0%	-1.6	0.1
Canada	8.4%	8.1%	7.6%	7.3%	7.1%	6.9%	6.9%	7.1%	6.4%	5.9%	5.7%	9.5%	7.5%	-2.0	-0.1

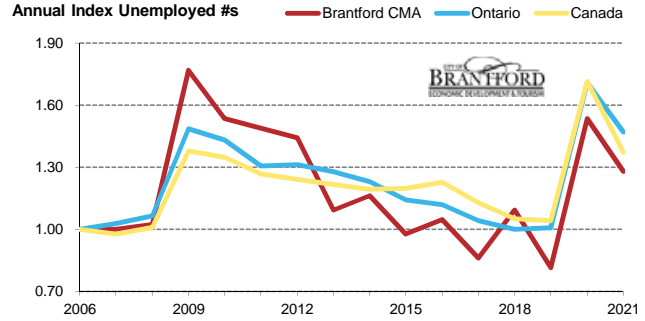
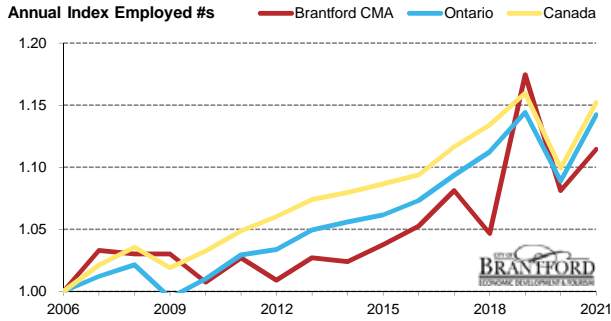
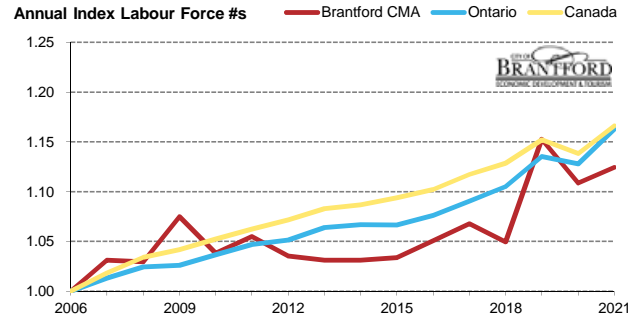
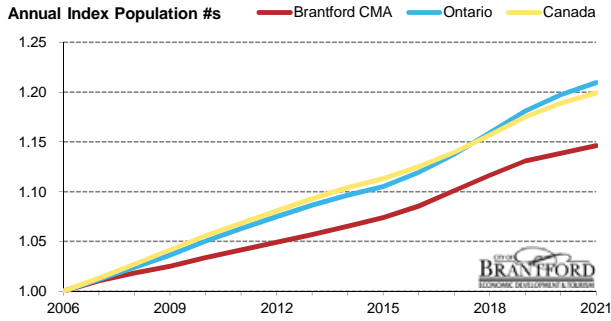
* Source: StatsCan Tables 14-10-0090-01, 14-10-0018-01, 14-10-0096-01, 14-10-0385-01, 14-10-0393-01. Based on persons of working age, 15 years+.

** Monthly municipal rates are reported as 3 month moving averages. All others are reported monthly. | Statistics Canada must be credited when this data is used.

Data for the County of Brant is not reported separately by Stats Canada. Prepared by the City of Brantford's Economic Development Department. Available at advantagebrantford.ca



* Source: StatsCan Tables 14-10-0090-01, 14-10-0018-01, 14-10-0096-01, 14-10-0385-01, 14-10-0393-01. Based on persons of working age, 15 years+.
 ** Monthly municipal rates are reported as 3 month moving averages. All others are reported monthly. | Statistics Canada must be credited when this data is used.
 Data for the County of Brant is not reported separately by Stats Canada. Prepared by the City of Brantford's Economic Development Department. Available at advantagebrantford.ca

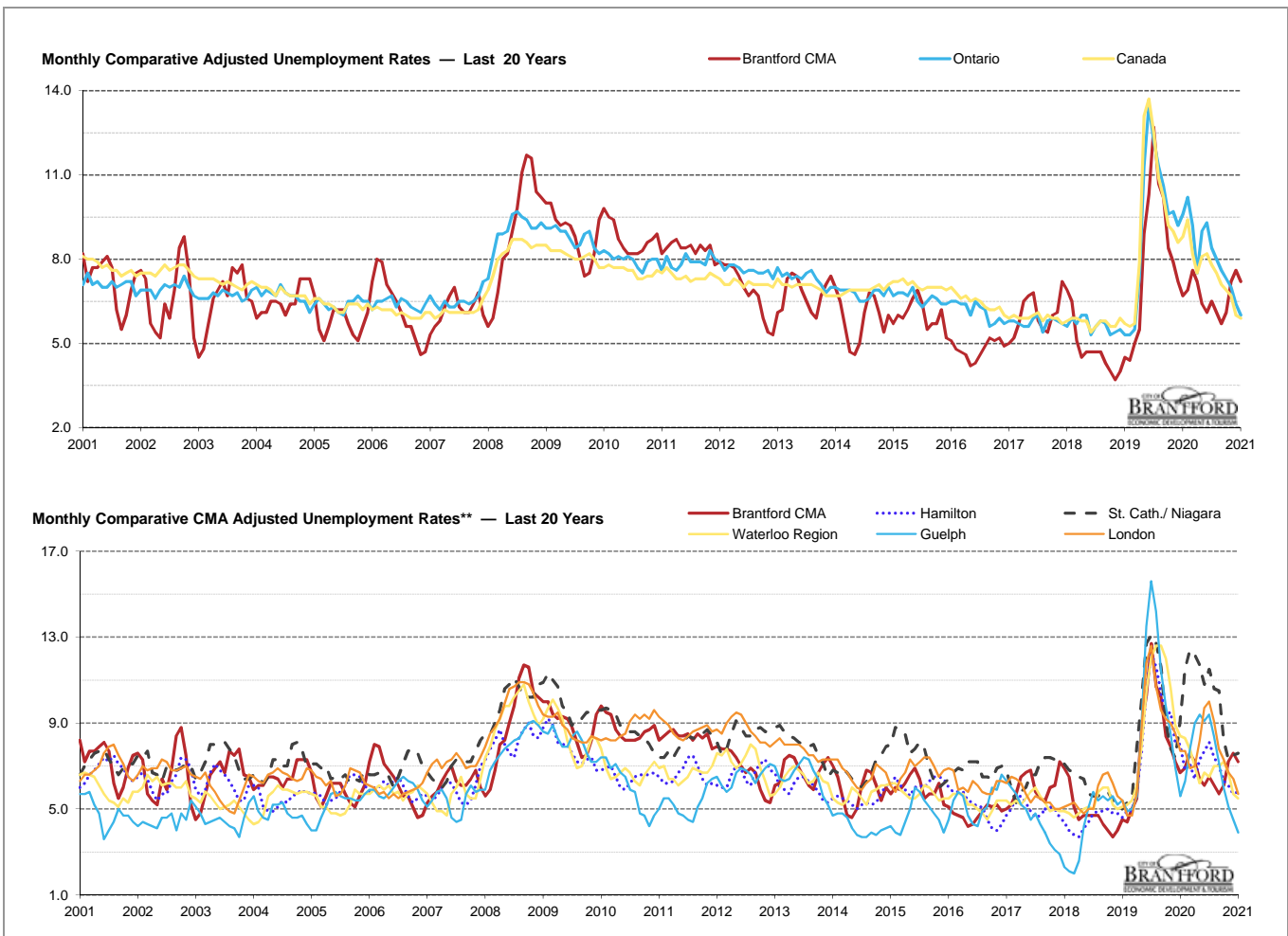


Absolute Numbers		2011	2012	2013	2014	2015	2016	2017	2018	2019	2020	2021	Y/Y	10 Y/Y
Canada	Population (000)	27,905	28,231	28,547	28,844	29,076	29,386	29,764	30,221	30,695	31,053	31,326	274	3,421
Canada	Labour Force (000)	18,575	18,737	18,933	18,998	19,121	19,270	19,530	19,732	20,140	19,897	20,385	489	1,811
Canada	Employed (000)	17,172	17,363	17,585	17,677	17,794	17,912	18,281	18,568	18,986	17,999	18,865	866	1,694
Canada	Unemployed (000)	1,403	1,375	1,348	1,320	1,327	1,359	1,249	1,164	1,154	1,897	1,520	-378	117
Ontario	Population (000)	10,845	10,969	11,085	11,187	11,278	11,422	11,607	11,828	12,051	12,218	12,341	123	1,496
Ontario	Labour Force (000)	7,207	7,239	7,325	7,345	7,343	7,409	7,507	7,609	7,816	7,766	8,007	241	800
Ontario	Employed (000)	6,638	6,667	6,768	6,809	6,845	6,921	7,053	7,173	7,377	7,022	7,366	345	728
Ontario	Unemployed (000)	569	572	557	536	498	488	454	436	439	744	640	-104	71
Brantford CMA	Population (000)	108.3	109.1	109.9	110.8	111.7	112.9	114.5	116.1	117.6	118.4	119.2	0.8	10.9
Brantford CMA	Labour Force (000)	74.7	73.3	73.0	73.0	73.2	74.4	75.6	74.3	81.6	78.5	79.6	1.1	4.9
Brantford CMA	Employed (000)	68.3	67.1	68.3	68.1	69.0	70.0	71.9	69.6	78.1	71.9	74.1	2.2	5.8
Brantford CMA	Unemployed (000)	6.4	6.2	4.7	5.0	4.2	4.5	3.7	4.7	3.5	6.6	5.5	-1.1	-0.9

* Source: StatsCan Tables 14-10-0090-01, 14-10-0018-01, 14-10-0096-01, 14-10-0385-01, 14-10-0393-01. Based on persons of working age, 15 years+.

** Monthly municipal rates are reported as 3 month moving averages. All others are reported monthly. | Statistics Canada must be credited when this data is used.

Data for the County of Brant is not reported separately by Stats Canada. Prepared by the City of Brantford's Economic Development Department. Available at advantagebrantford.ca



* Source: StatsCan Tables 14-10-0090-01, 14-10-0018-01, 14-10-0096-01, 14-10-0385-01, 14-10-0393-01. Based on persons of working age, 15 years+.
 ** Monthly municipal rates are reported as 3 month moving averages. All others are reported monthly. | Statistics Canada must be credited when this data is used.
 Data for the County of Brant is not reported separately by Stats Canada. Prepared by the City of Brantford's Economic Development Department. Available at advantagebrantford.ca