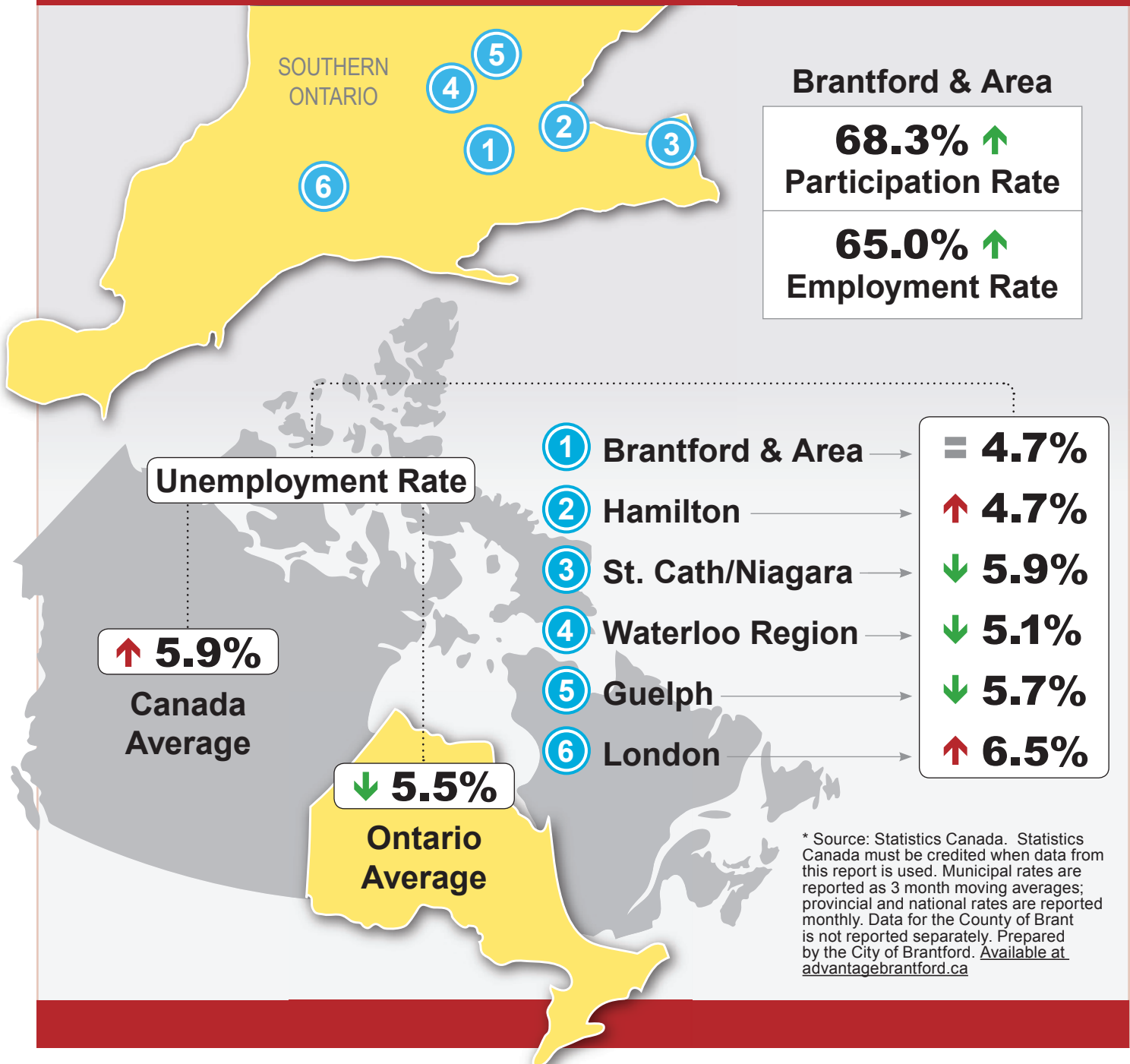
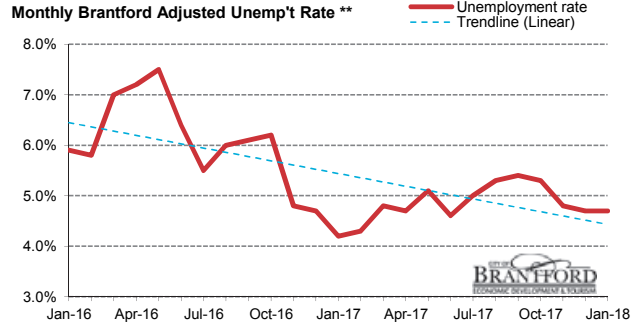
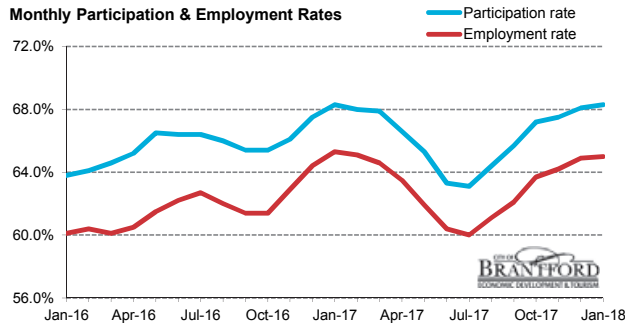
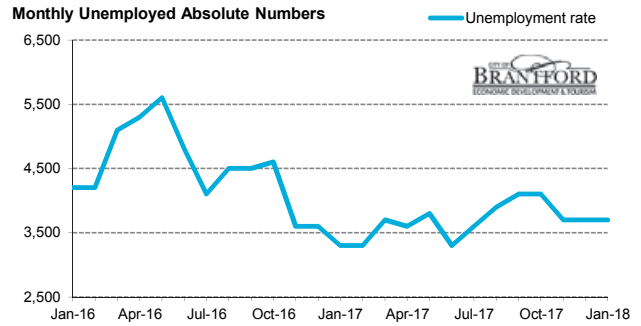
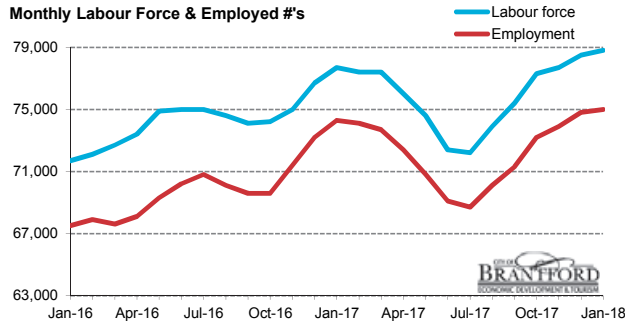




# JAN 2018

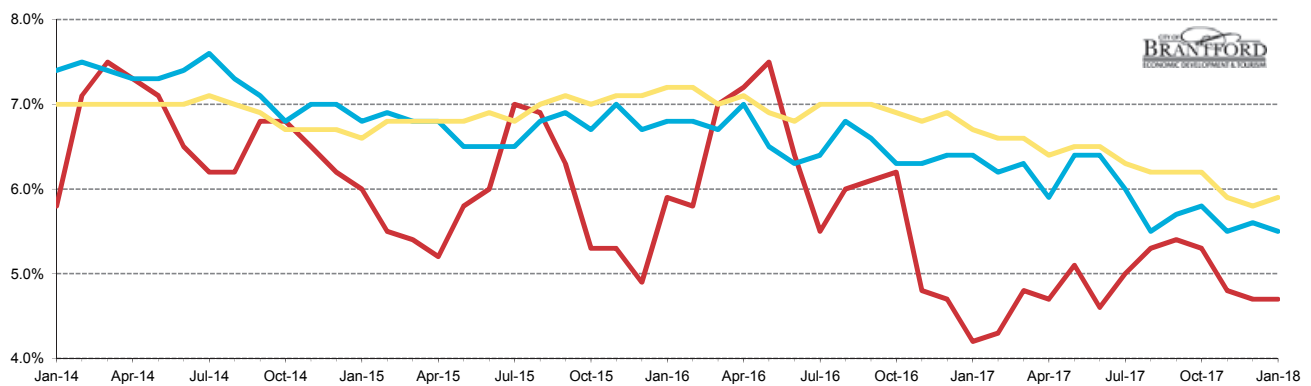
## Local Labour Market Report\*





Brantford CMA	Jan-17	Feb-17	Mar-17	Apr-17	May-17	Jun-17	Jul-17	Aug-17	Sep-17	Oct-17	Nov-17	Dec-17	Jan-18	M/M	Y/Y
<b>Total Population</b>	113,800	113,900	114,000	114,100	114,300	114,400	114,500	114,700	114,800	115,000	115,100	115,300	115,400	100	1,600
<b>Labour Force</b>	77,700	77,400	77,400	76,000	74,600	72,400	72,200	73,900	75,400	77,300	77,700	78,500	78,800	300	1,100
<b>Employed</b>	74,300	74,100	73,700	72,400	70,800	69,100	68,700	70,100	71,300	73,200	73,900	74,800	75,000	200	700
<b>Unemployed</b>	3,300	3,300	3,700	3,600	3,800	3,300	3,600	3,900	4,100	4,100	3,700	3,700	3,700	0	400
<b>Unemploy'm't Rate</b>	4.2%	4.3%	4.8%	4.7%	5.1%	4.6%	5.0%	5.3%	5.4%	5.3%	4.8%	4.7%	4.7%	0.0	0.5
<b>Participat'n Rate</b>	68.3%	68.0%	67.9%	66.6%	65.3%	63.3%	63.1%	64.4%	65.7%	67.2%	67.5%	68.1%	68.3%	0.2	0.0
<b>Employ'm't Rate</b>	65.3%	65.1%	64.6%	63.5%	61.9%	60.4%	60.0%	61.1%	62.1%	63.7%	64.2%	64.9%	65.0%	0.1	-0.3

Monthly Comparative Adjusted Unemployment Rates — Last 4 Years



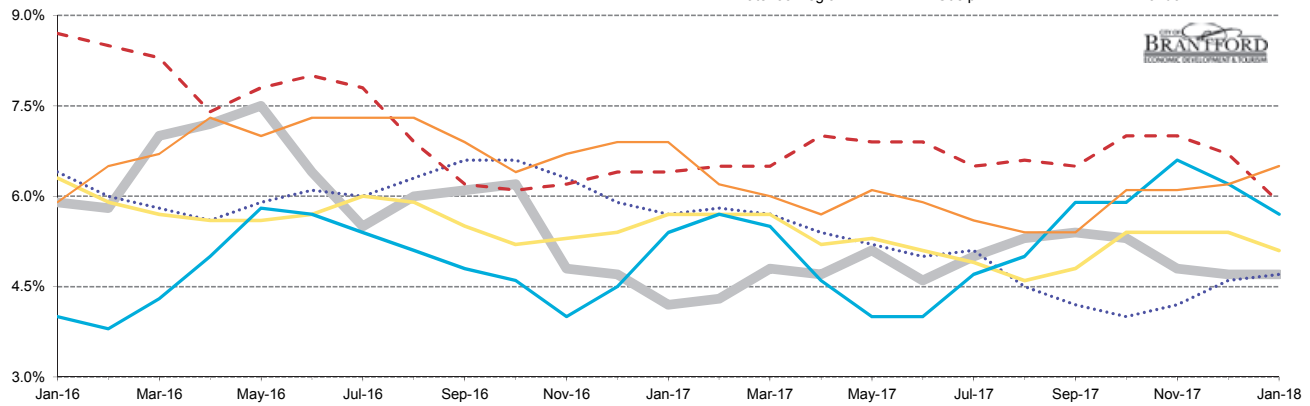
Unemployment %	Jan-17	Feb-17	Mar-17	Apr-17	May-17	Jun-17	Jul-17	Aug-17	Sep-17	Oct-17	Nov-17	Dec-17	Jan-18	M/M	Y/Y
<b>Brantford CMA **</b>	4.2%	4.3%	4.8%	4.7%	5.1%	4.6%	5.0%	5.3%	5.4%	5.3%	4.8%	4.7%	4.7%	0.0	0.5
<b>Ontario</b>	6.4%	6.2%	6.3%	5.9%	6.4%	6.4%	6.0%	5.5%	5.7%	5.8%	5.5%	5.6%	5.5%	-0.1	-0.9
<b>Canada</b>	6.7%	6.6%	6.6%	6.4%	6.5%	6.5%	6.3%	6.2%	6.2%	6.2%	5.9%	5.8%	5.9%	0.1	-0.8

\* Source: Stats Canada. Based on persons of working age, 15 years and over. Statistics Canada must be credited when data from this report is used.

\*\* Monthly municipal rates are reported as 3 month moving averages. All others are reported monthly.

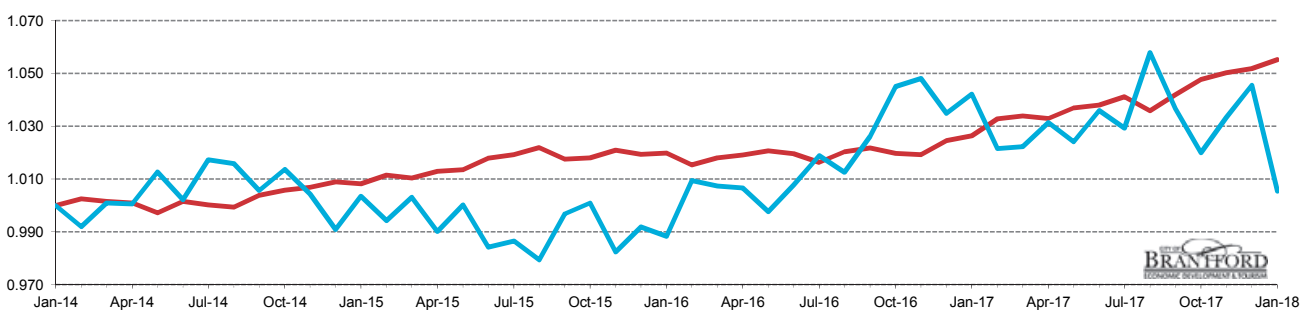
Data for the County of Brant is not reported separately by Stats Canada. Prepared by the City of Brantford's Economic Development Department. Available at [advantagebrantford.ca](http://advantagebrantford.ca)

Monthly Comparative Local Adjusted Unemployment Rates\*\* — Last 2 Years

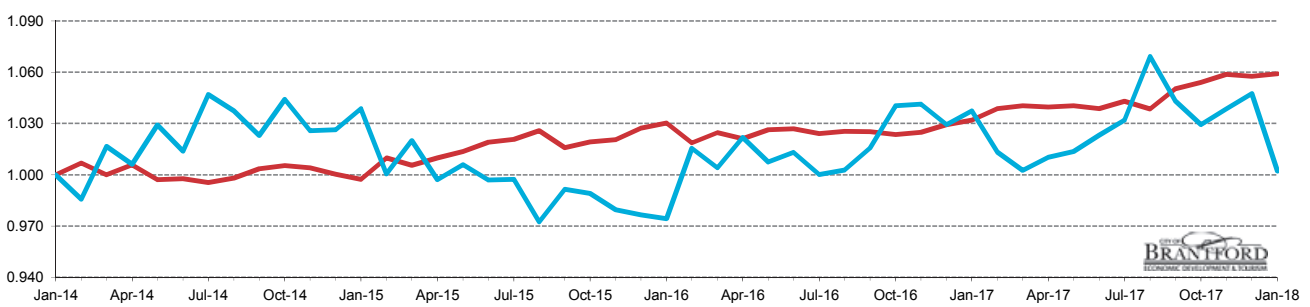


Unemployment %	Jan-17	Feb-17	Mar-17	Apr-17	May-17	Jun-17	Jul-17	Aug-17	Sep-17	Oct-17	Nov-17	Dec-17	Jan-18	M/M	Y/Y
<b>Brantford CMA</b>	4.2%	4.3%	4.8%	4.7%	5.1%	4.6%	5.0%	5.3%	5.4%	5.3%	4.8%	4.7%	4.7%	0.0	0.5
<b>Hamilton</b>	5.7%	5.8%	5.7%	5.4%	5.2%	5.0%	5.1%	4.5%	4.2%	4.0%	4.2%	4.6%	4.7%	0.1	-1.0
<b>St. Cath./Niagara</b>	6.4%	6.5%	6.5%	7.0%	6.9%	6.9%	6.5%	6.6%	6.5%	7.0%	7.0%	6.7%	5.9%	-0.8	-0.5
<b>Waterloo Region</b>	5.7%	5.7%	5.7%	5.2%	5.3%	5.1%	4.9%	4.6%	4.8%	5.4%	5.4%	5.4%	5.1%	-0.3	-0.6
<b>Guelph</b>	5.4%	5.7%	5.5%	4.6%	4.0%	4.0%	4.7%	5.0%	5.9%	5.9%	6.6%	6.2%	5.7%	-0.5	0.3
<b>London</b>	6.9%	6.2%	6.0%	5.7%	6.1%	5.9%	5.6%	5.4%	5.4%	6.1%	6.1%	6.2%	6.5%	0.3	-0.4

Monthly Index: Full Time vs Part Time Positions in Canada (based on same month 4 years ago)



Monthly Index: Full Time vs Part Time Positions in Ontario (based on same month 4 years ago)

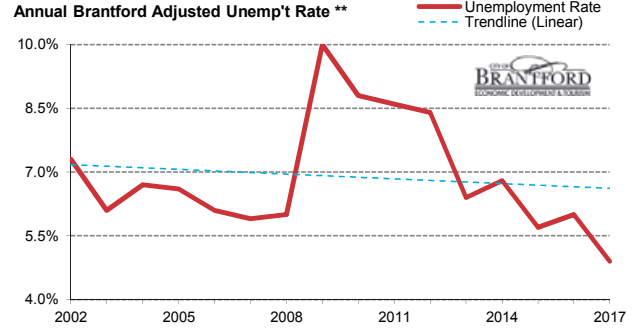
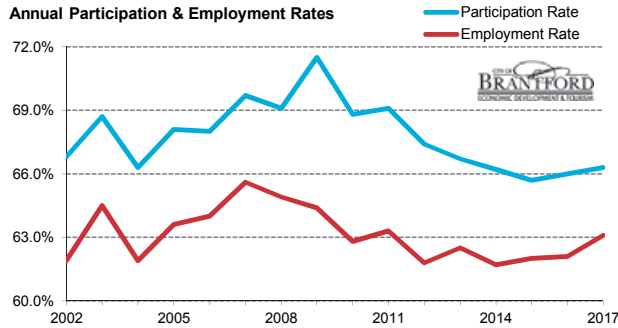
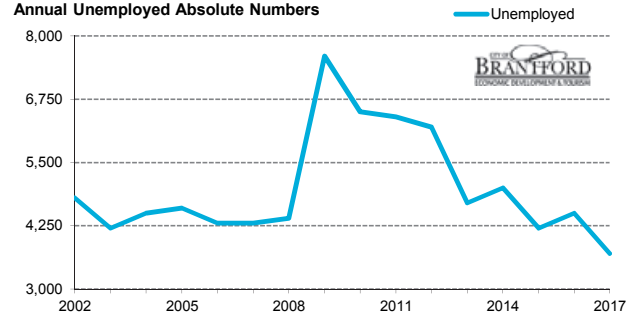
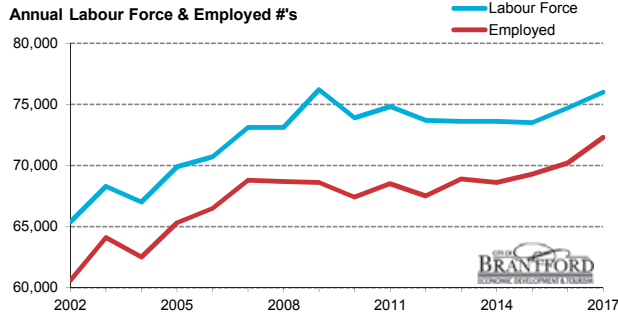


FT vs PT Positions	Jan-17	Feb-17	Mar-17	Apr-17	May-17	Jun-17	Jul-17	Aug-17	Sep-17	Oct-17	Nov-17	Dec-17	Jan-18	% M/M	% Y/Y
<b>Canada FT (000's)</b>	14,709.6	14,801.5	14,817.5	14,803.2	14,860.8	14,875.5	14,921.1	14,845.9	14,931.1	15,016.0	15,051.5	15,074.7	15,123.7	0.3	2.8
<b>Canada PT (000's)</b>	3,558.8	3,488.5	3,491.1	3,522.2	3,497.3	3,537.6	3,515.1	3,612.9	3,540.3	3,483.2	3,528.8	3,570.4	3,433.4	-3.8	-3.5
<b>Canada FT %</b>	80.5%	80.9%	80.9%	80.8%	80.9%	80.8%	80.9%	80.4%	80.8%	81.2%	81.0%	80.9%	81.5%		
<b>Canada PT %</b>	19.5%	19.1%	19.1%	19.2%	19.1%	19.2%	19.1%	19.6%	19.2%	18.8%	19.0%	19.1%	18.5%		
<b>Ontario FT (000's)</b>	5,709.4	5,747.3	5,755.9	5,751.6	5,755.7	5,747.2	5,770.5	5,745.4	5,811.3	5,832.0	5,857.2	5,851.4	5,859.9	0.1	2.6
<b>Ontario PT (000's)</b>	1,359.2	1,327.6	1,313.6	1,323.5	1,328.1	1,340.5	1,352.0	1,400.8	1,366.9	1,348.7	1,360.6	1,372.4	1,313.1	-4.3	-3.4
<b>Ontario FT %</b>	80.8%	81.2%	81.4%	81.3%	81.3%	81.1%	81.0%	80.4%	81.0%	81.2%	81.1%	81.0%	81.7%		
<b>Ontario PT %</b>	19.2%	18.8%	18.6%	18.7%	18.7%	18.9%	19.0%	19.6%	19.0%	18.8%	18.9%	19.0%	18.3%		

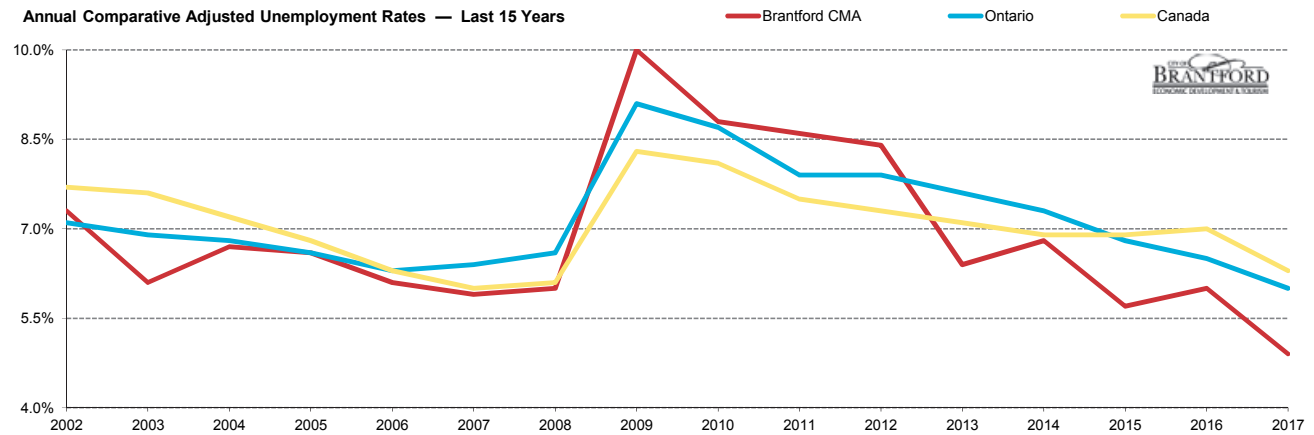
\* Source: Stats Canada. Based on persons of working age, 15 years and over. Statistics Canada must be credited when data from this report is used.

\*\* Monthly municipal rates are reported as 3 month moving averages. All others are reported monthly.

Data for the County of Brant is not reported separately by Stats Canada. Prepared by the City of Brantford's Economic Development Department. Available at [advantagebrantford.ca](http://advantagebrantford.ca)



Brantford CMA	2005	2006	2007	2008	2009	2010	2011	2012	2013	2014	2015	2016	2017	Y/Y	10 Y/Y
Total Population	102,600	103,900	104,900	105,800	106,500	107,400	108,300	109,300	110,300	111,100	111,800	113,100	114,600	1,500	9,700
Labour Force	69,900	70,700	73,100	73,100	76,200	73,900	74,800	73,700	73,600	73,600	73,500	74,700	76,000	1,300	2,900
Employed	65,300	66,500	68,800	68,700	68,600	67,400	68,500	67,500	68,900	68,600	69,300	70,200	72,300	2,100	3,500
Unemployed	4,600	4,300	4,300	4,400	7,600	6,500	6,400	6,200	4,700	5,000	4,200	4,500	3,700	-800	-600
Unemployment Rate	6.6%	6.1%	5.9%	6.0%	10.0%	8.8%	8.6%	8.4%	6.4%	6.8%	5.7%	6.0%	4.9%	-1.1	-1.0
Participat'n Rate	68.1%	68.0%	69.7%	69.1%	71.5%	68.8%	69.1%	67.4%	66.7%	66.2%	65.7%	66.0%	66.3%	0.3	-3.4
Employment Rate	63.6%	64.0%	65.6%	64.9%	64.4%	62.8%	63.3%	61.8%	62.5%	61.7%	62.0%	62.1%	63.1%	1.0	-2.5



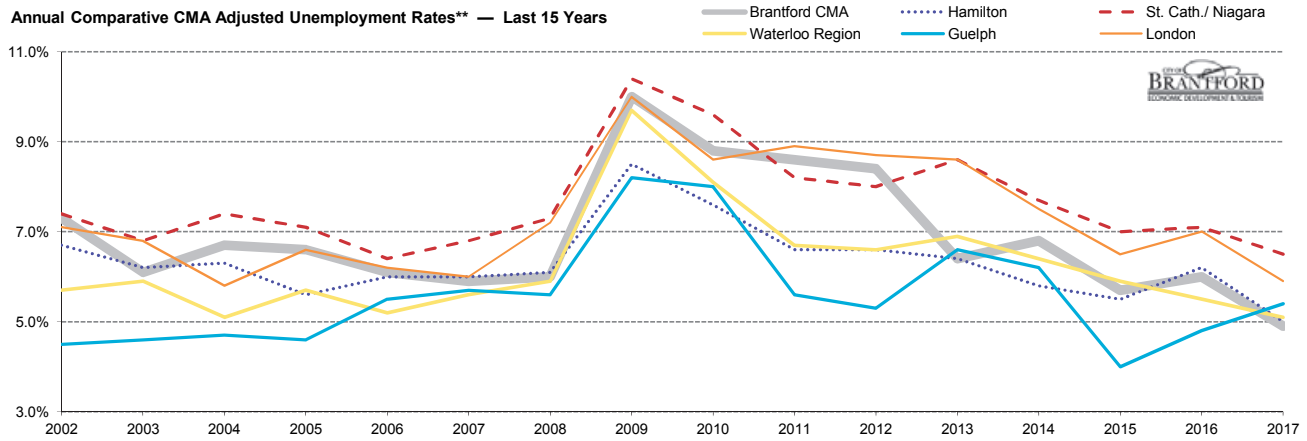
Unemployment %	2005	2006	2007	2008	2009	2010	2011	2012	2013	2014	2015	2016	2017	Y/Y	10 Y/Y
Brantford CMA **	6.6%	6.1%	5.9%	6.0%	10.0%	8.8%	8.6%	8.4%	6.4%	6.8%	5.7%	6.0%	4.9%	-1.1	-1.0
Ontario	6.6%	6.3%	6.4%	6.6%	9.1%	8.7%	7.9%	7.9%	7.6%	7.3%	6.8%	6.5%	6.0%	-0.5	-0.4
Canada	6.8%	6.3%	6.0%	6.1%	8.3%	8.1%	7.5%	7.3%	7.1%	6.9%	6.9%	7.0%	6.3%	-0.7	0.3

\* Source: Stats Canada. Based on persons of working age, 15 years and over. Statistics Canada must be credited when data from this report is used.

\*\* Monthly municipal rates are reported as 3 month moving averages. All others are reported monthly.

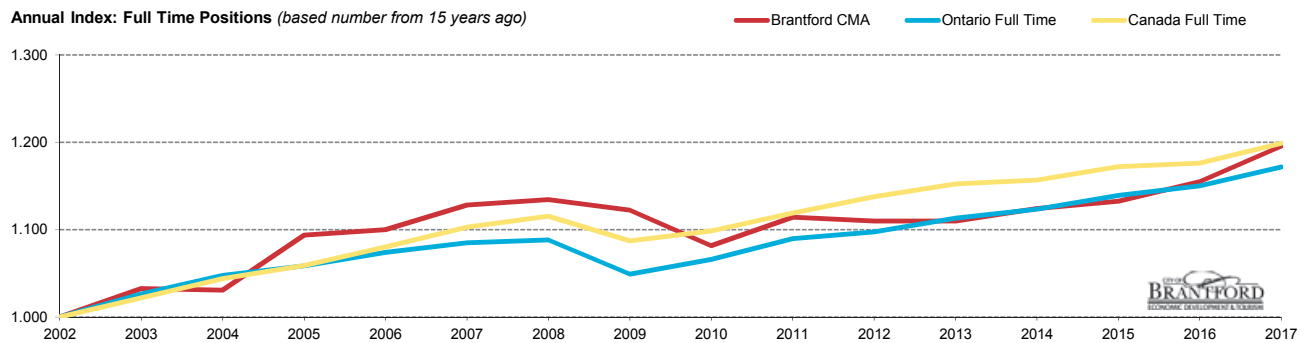
Data for the County of Brant is not reported separately by Stats Canada. Prepared by the City of Brantford's Economic Development Department. Available at [advantagebrantford.ca](http://advantagebrantford.ca)

Annual Comparative CMA Adjusted Unemployment Rates\*\* — Last 15 Years

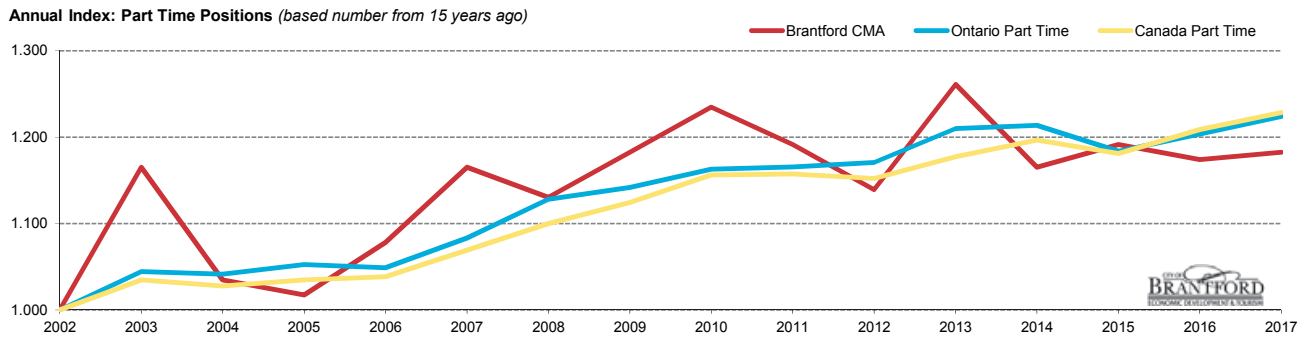


Unemployment %	2005	2006	2007	2008	2009	2010	2011	2012	2013	2014	2015	2016	2017	Y/Y	10 Y/Y
<b>Brantford CMA</b>	6.6%	6.1%	5.9%	6.0%	10.0%	8.8%	8.6%	8.4%	6.4%	6.8%	5.7%	6.0%	4.9%	-1.1	-1.0
<b>Hamilton</b>	5.6%	6.0%	6.0%	6.1%	8.5%	7.6%	6.6%	6.6%	6.4%	5.8%	5.5%	6.2%	5.0%	-1.2	-1.0
<b>St. Cath./Niagara</b>	7.1%	6.4%	6.8%	7.3%	10.4%	9.6%	8.2%	8.0%	8.6%	7.7%	7.0%	7.1%	6.5%	-0.6	-0.3
<b>Waterloo Region</b>	5.7%	5.2%	5.6%	5.9%	9.7%	8.1%	6.7%	6.6%	6.9%	6.4%	5.9%	5.5%	5.1%	-0.4	-0.5
<b>Guelph</b>	4.6%	5.5%	5.7%	5.6%	8.2%	8.0%	5.6%	5.3%	6.6%	6.2%	4.0%	4.8%	5.4%	0.6	-0.3
<b>London</b>	6.6%	6.2%	6.0%	7.2%	10.0%	8.6%	8.9%	8.7%	8.6%	7.5%	6.5%	7.0%	5.9%	-1.1	-0.1

Annual Index: Full Time Positions (based number from 15 years ago)



Annual Index: Part Time Positions (based number from 15 years ago)

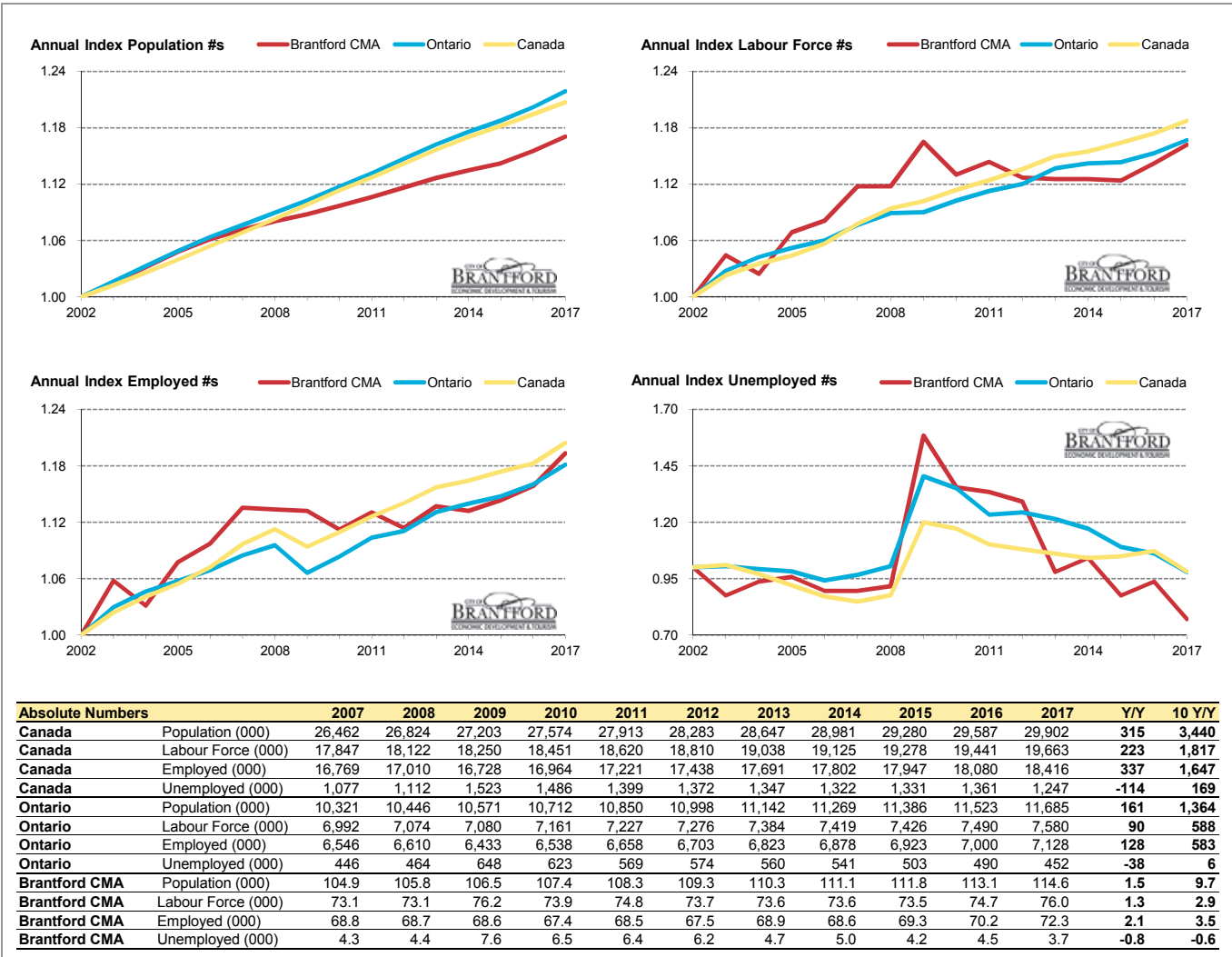


FT vs PT Positions	2005	2006	2007	2008	2009	2010	2011	2012	2013	2014	2015	2016	2017	Y/Y %	10 Y/Y %
<b>Canada FT (000)</b>	13,155.3	13,416.8	13,702.1	13,854.7	13,502.6	13,647.2	13,900.9	14,133.2	14,314.2	14,369.9	14,559.3	14,612.2	14,892.8	1.9	8.7
<b>Canada PT (000)</b>	2,968.2	2,979.2	3,067.2	3,155.5	3,225.0	3,317.1	3,320.2	3,304.7	3,376.9	3,432.3	3,387.3	3,467.7	3,523.6	1.6	14.9
<b>Canada FT %</b>	81.6%	81.8%	81.7%	81.4%	80.7%	80.4%	80.7%	81.0%	80.9%	80.7%	81.1%	80.8%	80.9%		
<b>Canada PT %</b>	18.4%	18.2%	18.3%	18.6%	19.3%	19.6%	19.3%	19.0%	19.1%	19.3%	18.9%	19.2%	19.1%		
<b>Ontario FT (000)</b>	5,220.6	5,296.2	5,351.1	5,366.8	5,174.0	5,256.1	5,373.5	5,412.0	5,489.5	5,540.0	5,618.2	5,672.6	5,778.7	1.9	8.0
<b>Ontario PT (000)</b>	1,160.4	1,156.1	1,194.4	1,243.5	1,258.7	1,281.8	1,284.8	1,290.6	1,334.0	1,337.9	1,305.0	1,327.0	1,349.3	1.7	13.0
<b>Ontario FT %</b>	81.8%	82.1%	81.8%	81.2%	80.4%	80.4%	80.7%	80.7%	80.4%	80.5%	81.2%	81.0%	81.1%		
<b>Ontario PT %</b>	18.2%	17.9%	18.2%	18.8%	19.6%	19.6%	19.3%	19.3%	19.6%	19.5%	18.8%	19.0%	18.9%		
<b>Brantford FT (000)</b>	53.7	54.0	55.4	55.7	55.1	53.1	54.7	54.5	54.5	55.2	55.6	56.7	58.7	3.5	6.0
<b>Brantford PT (000)</b>	11.7	12.4	13.4	13.0	13.6	14.2	13.7	13.1	14.5	13.4	13.7	13.5	13.6	0.7	1.5
<b>Brantford FT %</b>	82.1%	81.3%	80.5%	81.1%	80.2%	78.9%	80.0%	80.6%	79.0%	80.5%	80.2%	80.8%	81.2%		
<b>Brantford PT %</b>	17.9%	18.7%	19.5%	18.9%	19.8%	21.1%	20.0%	19.4%	21.0%	19.5%	19.8%	19.2%	18.8%		

\* Source: Stats Canada. Based on persons of working age, 15 years and over. Statistics Canada must be credited when data from this report is used.

\*\* Monthly municipal rates are reported as 3 month moving averages. All others are reported monthly.

Data for the County of Brant is not reported separately by Stats Canada. Prepared by the City of Brantford's Economic Development Department. Available at [advantagebrantford.ca](http://advantagebrantford.ca)



\* Source: Stats Canada. Based on persons of working age, 15 years and over. Statistics Canada must be credited when data from this report is used.

\*\* Monthly municipal rates are reported as 3 month moving averages. All others are reported monthly.

Data for the County of Brant is not reported separately by Stats Canada. Prepared by the City of Brantford's Economic Development Department. Available at [advantagebrantford.ca](http://advantagebrantford.ca)