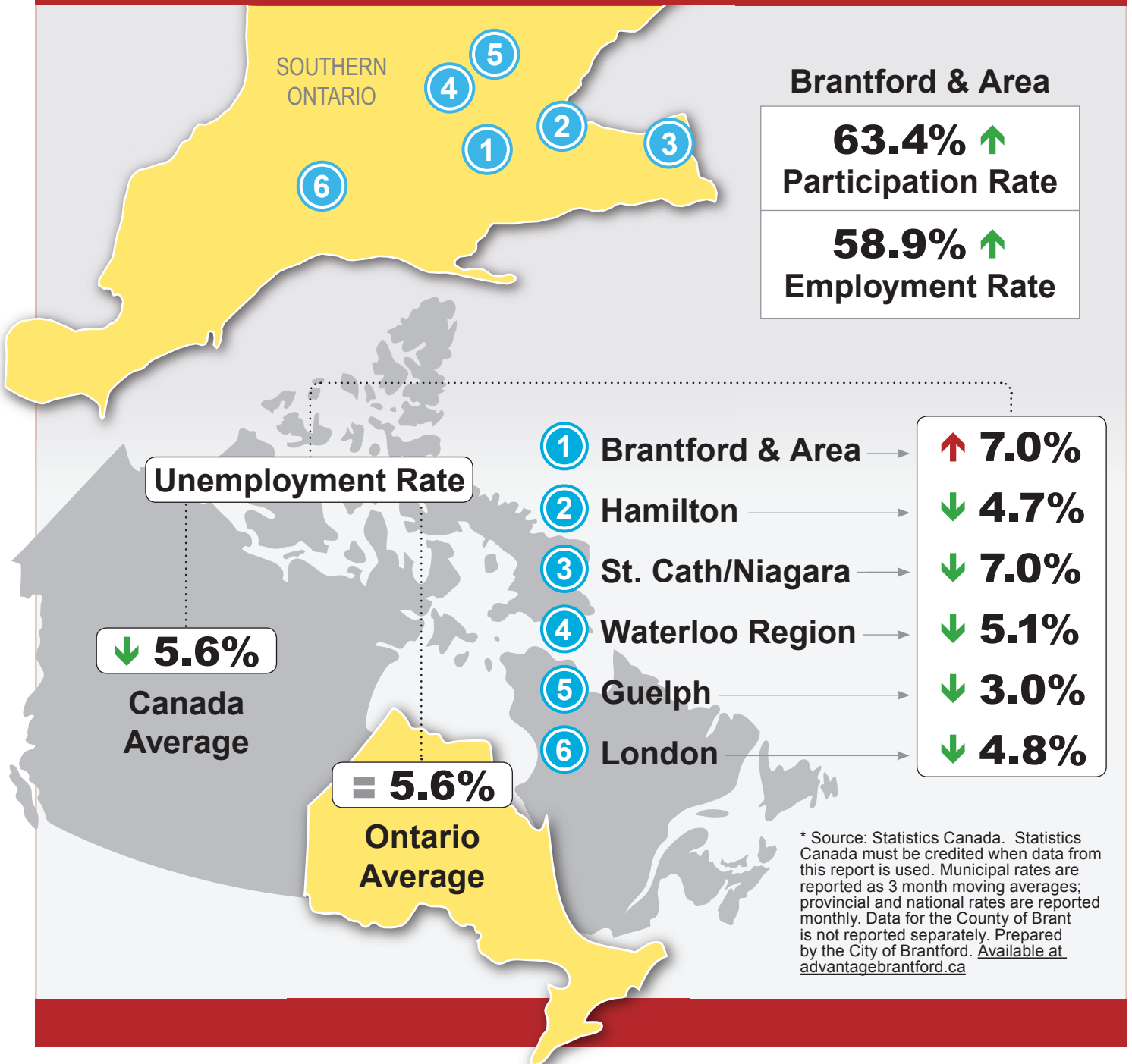
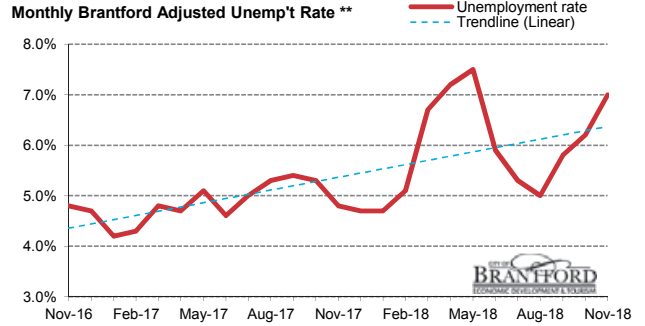
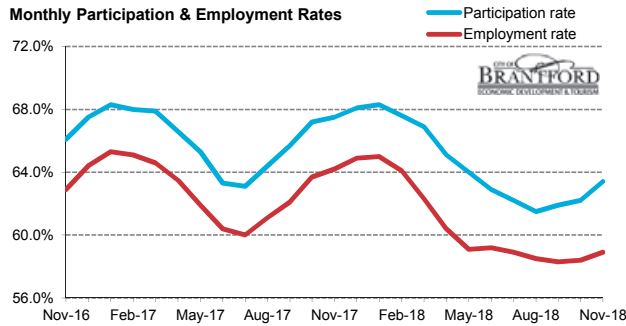
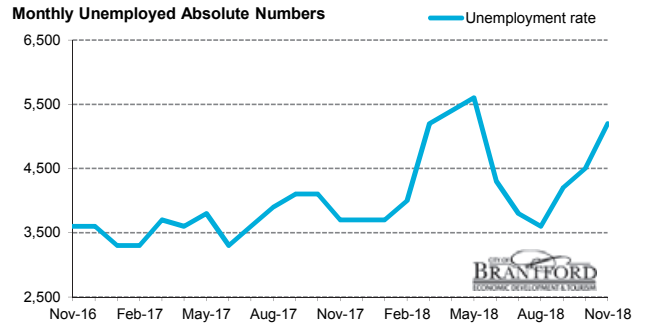
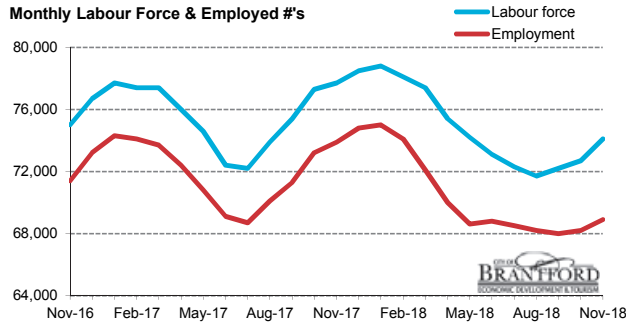


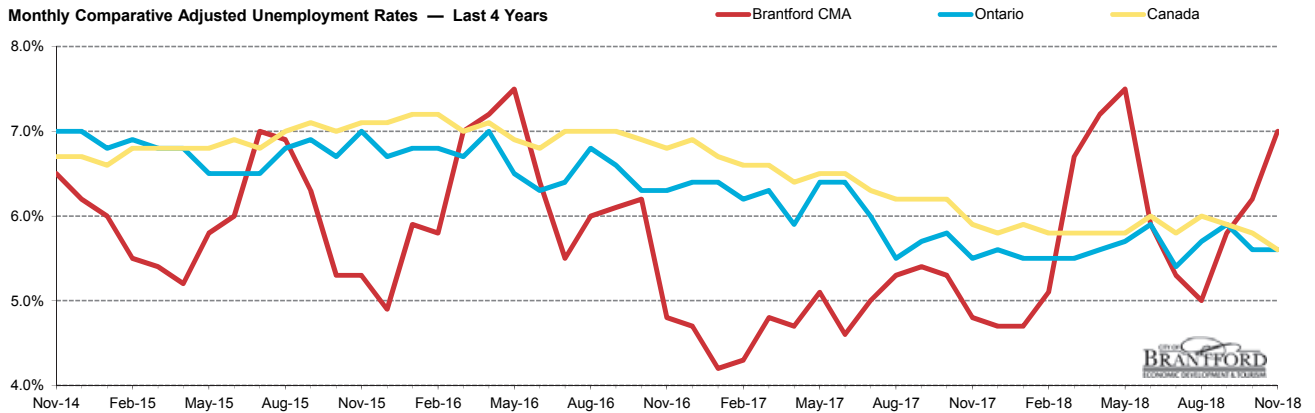
Local Labour Market Report*





Brantford CMA	Nov-17	Dec-17	Jan-18	Feb-18	Mar-18	Apr-18	May-18	Jun-18	Jul-18	Aug-18	Sep-18	Oct-18	Nov-18	M/M	Y/Y
Total Population	115,100	115,300	115,400	115,600	115,700	115,900	116,000	116,200	116,300	116,500	116,700	116,800	116,900	100	1,800
Labour Force	77,700	78,500	78,800	78,100	77,400	75,400	74,200	73,100	72,300	71,700	72,200	72,700	74,100	1,400	-3,600
Employed	73,900	74,800	75,000	74,100	72,100	70,000	68,600	68,800	68,500	68,200	68,000	68,200	68,900	700	-5,000
Unemployed	3,700	3,700	3,700	4,000	5,200	5,400	5,600	4,300	3,800	3,600	4,200	4,500	5,200	700	1,500
Unemploy'm't Rate	4.8%	4.7%	4.7%	5.1%	6.7%	7.2%	7.5%	5.9%	5.3%	5.0%	5.8%	6.2%	7.0%	0.8	2.2
Participat'n Rate	67.5%	68.1%	68.3%	67.6%	66.9%	65.1%	64.0%	62.9%	62.2%	61.5%	61.9%	62.2%	63.4%	1.2	-4.1
Employ'm't Rate	64.2%	64.9%	65.0%	64.1%	62.3%	60.4%	59.1%	59.2%	58.9%	58.5%	58.3%	58.4%	58.9%	0.5	-5.3

Monthly Comparative Adjusted Unemployment Rates — Last 4 Years



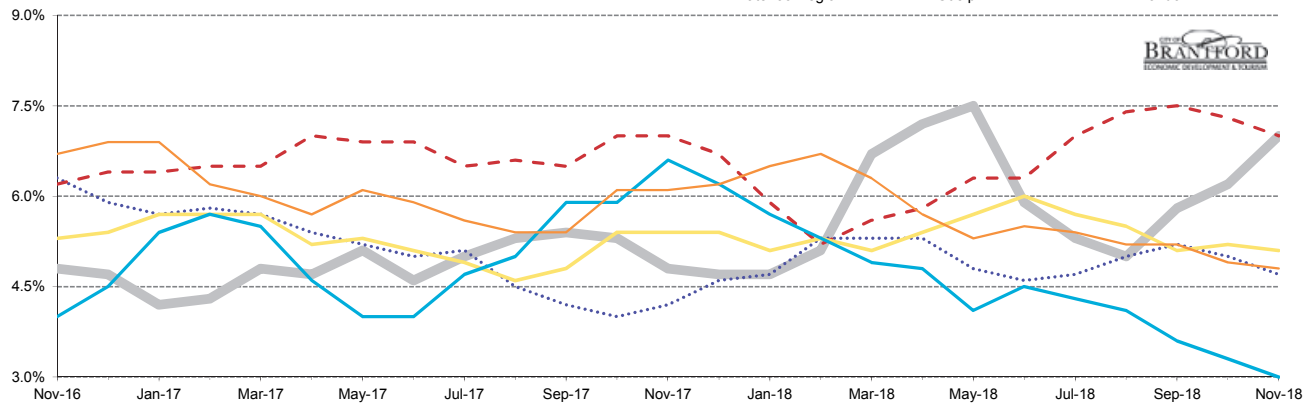
Unemployment %	Nov-17	Dec-17	Jan-18	Feb-18	Mar-18	Apr-18	May-18	Jun-18	Jul-18	Aug-18	Sep-18	Oct-18	Nov-18	M/M	Y/Y
Brantford CMA **	4.8%	4.7%	4.7%	5.1%	6.7%	7.2%	7.5%	5.9%	5.3%	5.0%	5.8%	6.2%	7.0%	0.8	2.2
Ontario	5.5%	5.6%	5.5%	5.5%	5.5%	5.6%	5.7%	5.9%	5.4%	5.7%	5.9%	5.6%	5.6%	0.0	0.1
Canada	5.9%	5.8%	5.9%	5.8%	5.8%	5.8%	5.8%	6.0%	5.8%	6.0%	5.9%	5.8%	5.6%	-0.2	-0.3

* Source: Stats Canada. Based on persons of working age, 15 years and over. Statistics Canada must be credited when data from this report is used.

** Monthly municipal rates are reported as 3 month moving averages. All others are reported monthly.

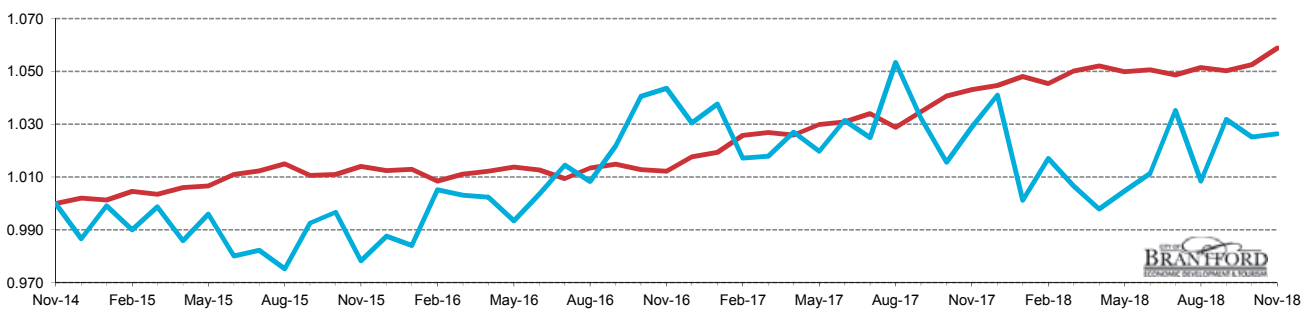
Data for the County of Brant is not reported separately by Stats Canada. Prepared by the City of Brantford's Economic Development Department. Available at advantagebrantford.ca

Monthly Comparative Local Adjusted Unemployment Rates** — Last 2 Years

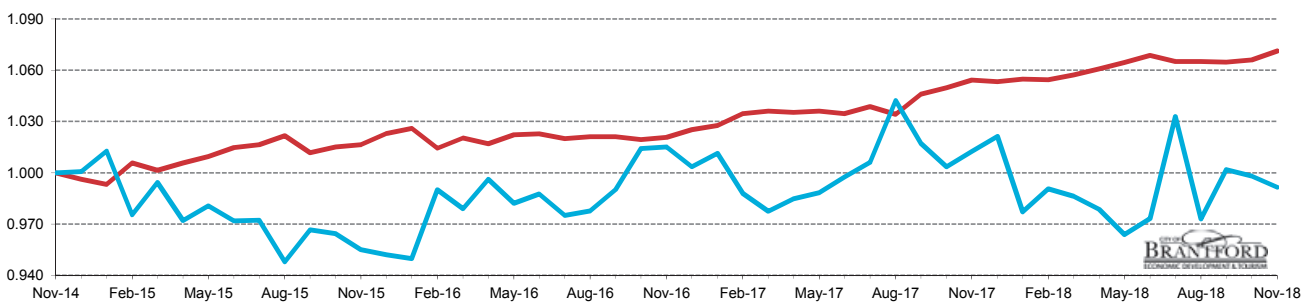


Unemployment %	Nov-17	Dec-17	Jan-18	Feb-18	Mar-18	Apr-18	May-18	Jun-18	Jul-18	Aug-18	Sep-18	Oct-18	Nov-18	M/M	Y/Y
Brantford CMA	4.8%	4.7%	4.7%	5.1%	6.7%	7.2%	7.5%	5.9%	5.3%	5.0%	5.8%	6.2%	7.0%	0.8	2.2
Hamilton	4.2%	4.6%	4.7%	5.3%	5.3%	5.3%	4.8%	4.6%	4.7%	5.0%	5.2%	5.0%	4.7%	-0.3	0.5
St. Cath./Niagara	7.0%	6.7%	5.9%	5.2%	5.6%	5.8%	6.3%	6.3%	7.0%	7.4%	7.5%	7.3%	7.0%	-0.3	0.0
Waterloo Region	5.4%	5.4%	5.1%	5.3%	5.1%	5.4%	5.7%	6.0%	5.7%	5.5%	5.1%	5.2%	5.1%	-0.1	-0.3
Guelph	6.6%	6.2%	5.7%	5.3%	4.9%	4.8%	4.1%	4.5%	4.3%	4.1%	3.6%	3.3%	3.0%	-0.3	-3.6
London	6.1%	6.2%	6.5%	6.7%	6.3%	5.7%	5.3%	5.5%	5.4%	5.2%	5.2%	4.9%	4.8%	-0.1	-1.3

Monthly Index: Full Time vs Part Time Positions in Canada (based on same month 4 years ago)



Monthly Index: Full Time vs Part Time Positions in Ontario (based on same month 4 years ago)

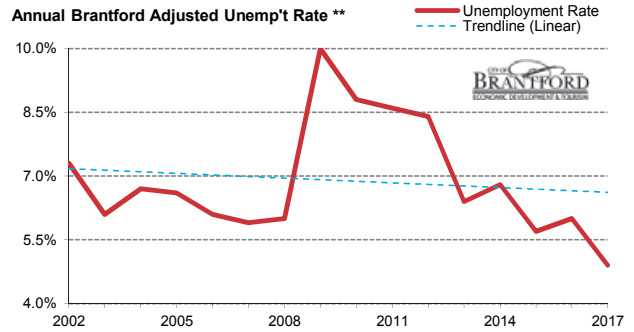
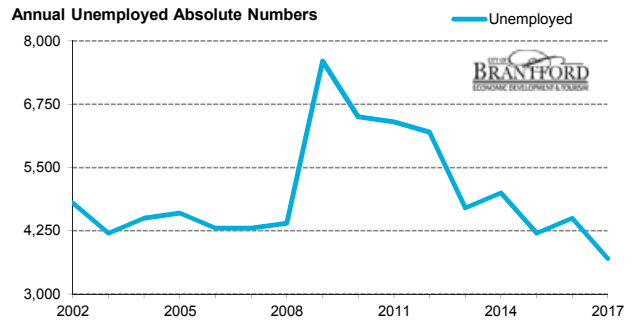
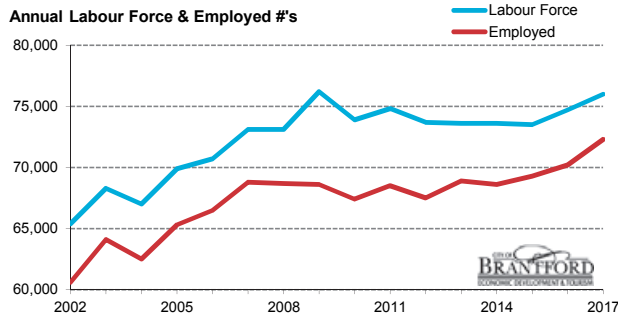


FT vs PT Positions	Nov-17	Dec-17	Jan-18	Feb-18	Mar-18	Apr-18	May-18	Jun-18	Jul-18	Aug-18	Sep-18	Oct-18	Nov-18	% M/M	% Y/Y
Canada FT (000's)	15,051.5	15,074.7	15,123.7	15,084.4	15,152.7	15,181.5	15,150.5	15,159.6	15,131.6	15,172.0	15,155.1	15,189.0	15,278.9	0.6	1.5
Canada PT (000's)	3,528.8	3,570.4	3,433.4	3,488.1	3,452.2	3,422.2	3,445.8	3,468.5	3,550.5	3,458.5	3,538.7	3,516.1	3,520.2	0.1	-0.2
Canada FT %	81.0%	80.9%	81.5%	81.2%	81.4%	81.6%	81.5%	81.4%	81.0%	81.4%	81.1%	81.2%	81.3%		
Canada PT %	19.0%	19.1%	18.5%	18.8%	18.6%	18.4%	18.5%	18.6%	19.0%	18.6%	18.9%	18.8%	18.7%		
Ontario FT (000's)	5,857.2	5,851.4	5,859.9	5,857.4	5,873.7	5,893.2	5,914.1	5,936.5	5,916.9	5,917.3	5,914.6	5,922.1	5,951.1	0.5	1.6
Ontario PT (000's)	1,360.6	1,372.4	1,313.1	1,331.2	1,325.5	1,315.2	1,295.3	1,307.9	1,388.2	1,307.5	1,346.4	1,341.4	1,332.5	-0.7	-2.1
Ontario FT %	81.1%	81.0%	81.7%	81.5%	81.6%	81.8%	82.0%	81.9%	81.0%	81.9%	81.5%	81.5%	81.7%		
Ontario PT %	18.9%	19.0%	18.3%	18.5%	18.4%	18.2%	18.0%	18.1%	19.0%	18.1%	18.5%	18.5%	18.3%		

* Source: Stats Canada. Based on persons of working age, 15 years and over. Statistics Canada must be credited when data from this report is used.

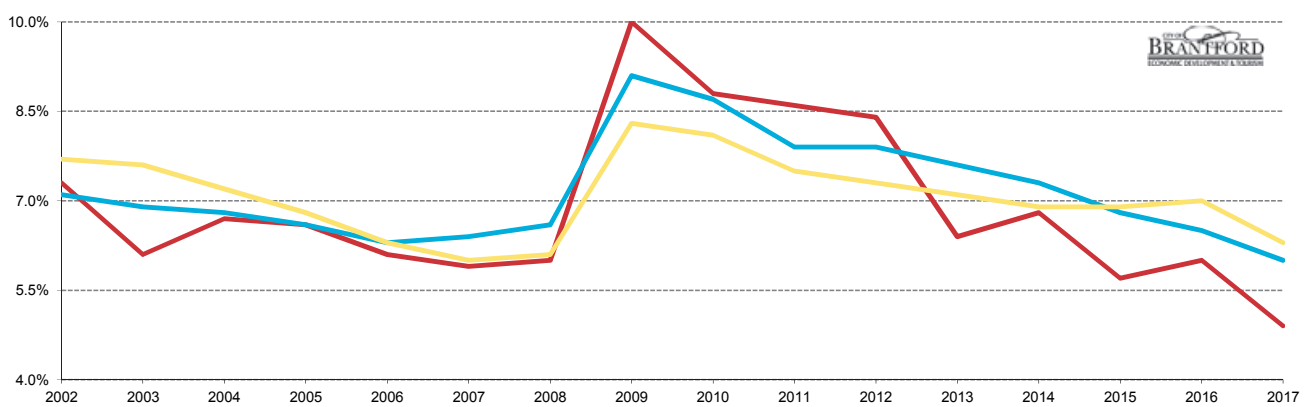
** Monthly municipal rates are reported as 3 month moving averages. All others are reported monthly.

Data for the County of Brant is not reported separately by Stats Canada. Prepared by the City of Brantford's Economic Development Department. Available at advantagebrantford.ca



Brantford CMA	2005	2006	2007	2008	2009	2010	2011	2012	2013	2014	2015	2016	2017	Y/Y	10 Y/Y
Total Population	102,600	103,900	104,900	105,800	106,500	107,400	108,300	109,300	110,300	111,100	111,800	113,100	114,600	1,500	9,700
Labour Force	69,900	70,700	73,100	73,100	76,200	73,900	74,800	73,700	73,600	73,600	73,500	74,700	76,000	1,300	2,900
Employed	65,300	66,500	68,800	68,700	68,600	67,400	68,500	67,500	68,900	68,600	69,300	70,200	72,300	2,100	3,500
Unemployed	4,600	4,300	4,300	4,400	7,600	6,500	6,400	6,200	4,700	5,000	4,200	4,500	3,700	-800	-600
Unemployment Rate	6.6%	6.1%	5.9%	6.0%	10.0%	8.8%	8.6%	8.4%	6.4%	6.8%	5.7%	6.0%	4.9%	-1.1	-1.0
Participat'n Rate	68.1%	68.0%	69.7%	69.1%	71.5%	68.8%	69.1%	67.4%	66.7%	66.2%	65.7%	66.0%	66.3%	0.3	-3.4
Employment Rate	63.6%	64.0%	65.6%	64.9%	64.4%	62.8%	63.3%	61.8%	62.5%	61.7%	62.0%	62.1%	63.1%	1.0	-2.5

Annual Comparative Adjusted Unemployment Rates — Last 15 Years



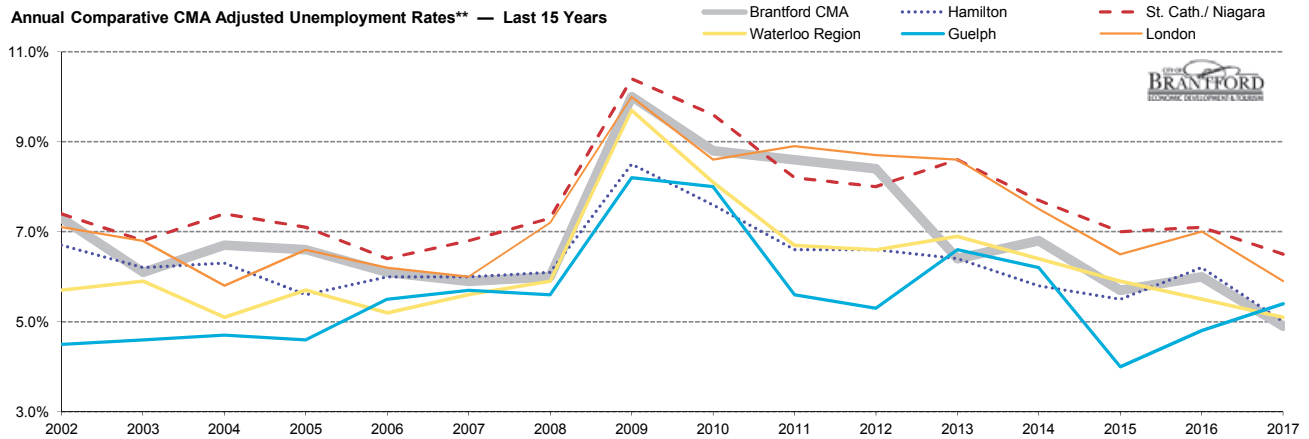
Unemployment %	2005	2006	2007	2008	2009	2010	2011	2012	2013	2014	2015	2016	2017	Y/Y	10 Y/Y
Brantford CMA **	6.6%	6.1%	5.9%	6.0%	10.0%	8.8%	8.6%	8.4%	6.4%	6.8%	5.7%	6.0%	4.9%	-1.1	-1.0
Ontario	6.6%	6.3%	6.4%	6.6%	9.1%	8.7%	7.9%	7.9%	7.6%	7.3%	6.8%	6.5%	6.0%	-0.5	-0.4
Canada	6.8%	6.3%	6.0%	6.1%	8.3%	8.1%	7.5%	7.3%	7.1%	6.9%	6.9%	7.0%	6.3%	-0.7	0.3

* Source: Stats Canada. Based on persons of working age, 15 years and over. Statistics Canada must be credited when data from this report is used.

** Monthly municipal rates are reported as 3 month moving averages. All others are reported monthly.

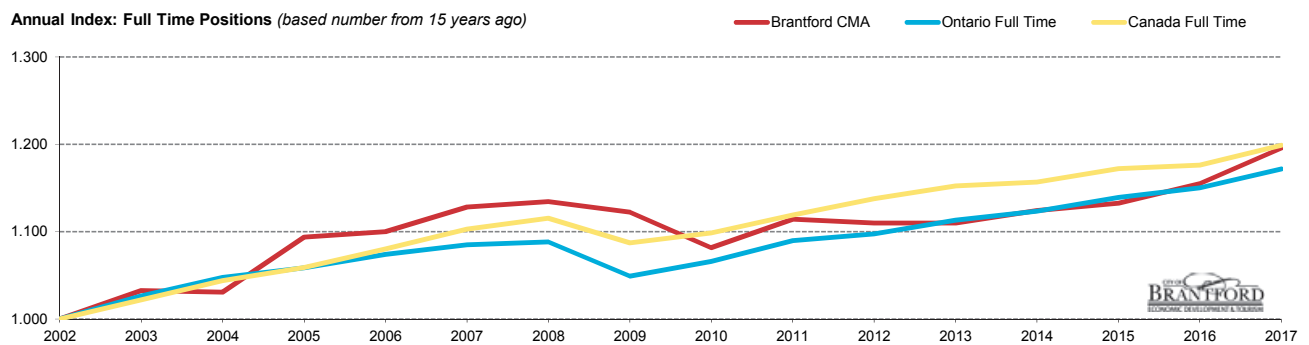
Data for the County of Brant is not reported separately by Stats Canada. Prepared by the City of Brantford's Economic Development Department. Available at advantagebrantford.ca

Annual Comparative CMA Adjusted Unemployment Rates** — Last 15 Years

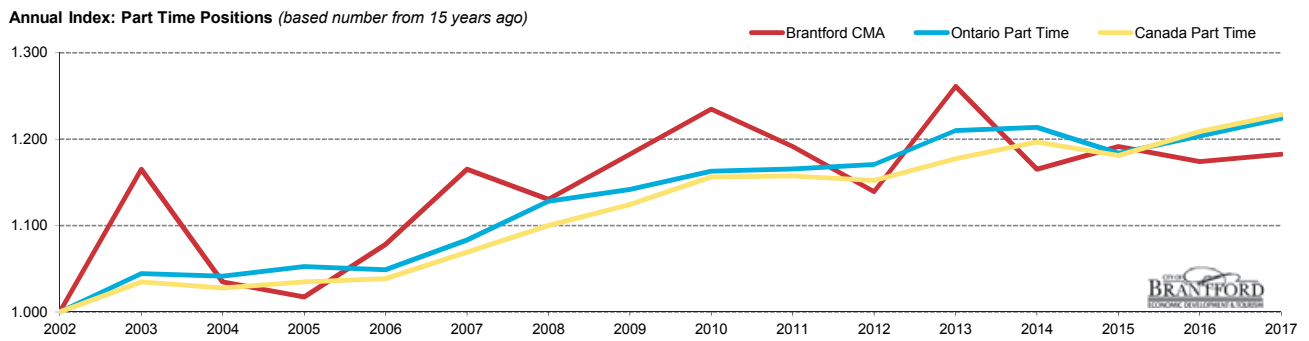


Unemployment %	2005	2006	2007	2008	2009	2010	2011	2012	2013	2014	2015	2016	2017	Y/Y	10 Y/Y
Brantford CMA	6.6%	6.1%	5.9%	6.0%	10.0%	8.8%	8.6%	8.4%	6.4%	6.8%	5.7%	6.0%	4.9%	-1.1	-1.0
Hamilton	5.6%	6.0%	6.0%	6.1%	8.5%	7.6%	6.6%	6.6%	6.4%	5.8%	5.5%	6.2%	5.0%	-1.2	-1.0
St. Cath./Niagara	7.1%	6.4%	6.8%	7.3%	10.4%	9.6%	8.2%	8.0%	8.6%	7.7%	7.0%	7.1%	6.5%	-0.6	-0.3
Waterloo Region	5.7%	5.2%	5.6%	5.9%	9.7%	8.1%	6.7%	6.6%	6.9%	6.4%	5.9%	5.5%	5.1%	-0.4	-0.5
Guelph	4.6%	5.5%	5.7%	5.6%	8.2%	8.0%	5.6%	5.3%	6.6%	6.2%	4.0%	4.8%	5.4%	0.6	-0.3
London	6.6%	6.2%	6.0%	7.2%	10.0%	8.6%	8.9%	8.7%	8.6%	7.5%	6.5%	7.0%	5.9%	-1.1	-0.1

Annual Index: Full Time Positions (based number from 15 years ago)



Annual Index: Part Time Positions (based number from 15 years ago)

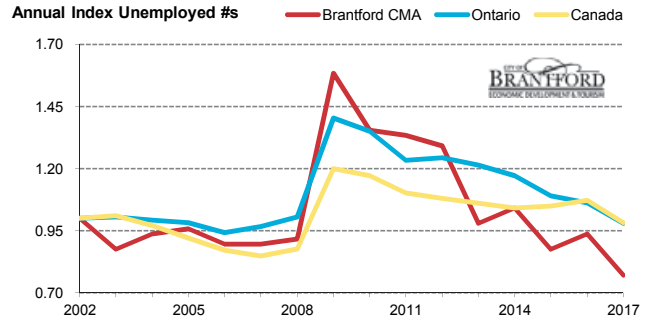
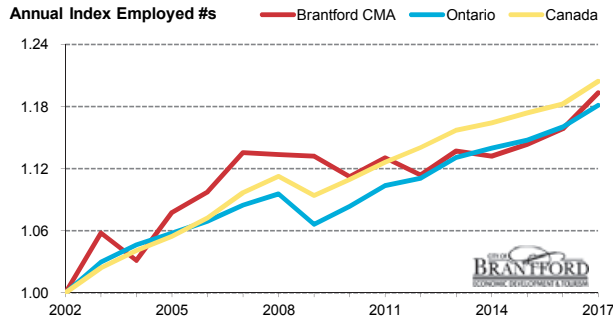
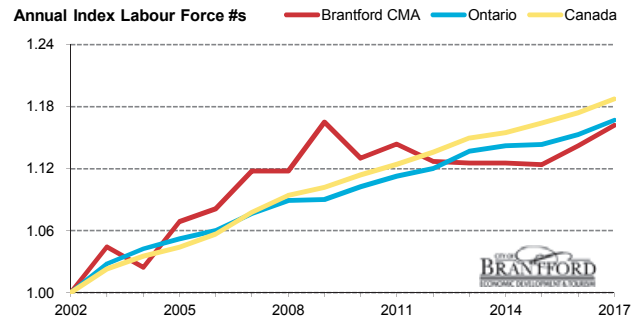
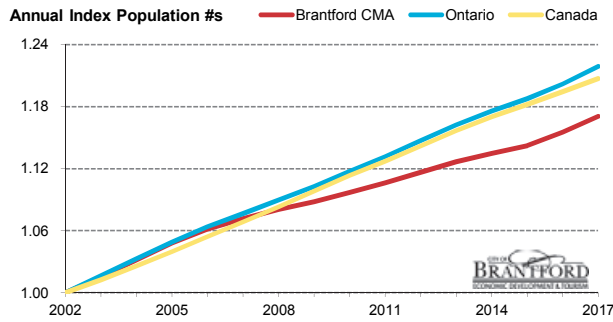


FT vs PT Positions	2005	2006	2007	2008	2009	2010	2011	2012	2013	2014	2015	2016	2017	Y/Y %	10 Y/Y %
Canada FT (000)	13,155.3	13,416.8	13,702.1	13,854.7	13,502.6	13,647.2	13,900.9	14,133.2	14,314.2	14,369.9	14,559.3	14,612.2	14,892.8	1.9	8.7
Canada PT (000)	2,968.2	2,979.2	3,067.2	3,155.5	3,225.0	3,317.1	3,320.2	3,304.7	3,376.9	3,432.3	3,387.3	3,467.7	3,523.6	1.6	14.9
Canada FT %	81.6%	81.8%	81.7%	81.4%	80.7%	80.4%	80.7%	81.0%	80.9%	80.7%	81.1%	80.8%	80.9%		
Canada PT %	18.4%	18.2%	18.3%	18.6%	19.3%	19.6%	19.3%	19.0%	19.1%	19.3%	18.9%	19.2%	19.1%		
Ontario FT (000)	5,220.6	5,296.2	5,351.1	5,366.8	5,174.0	5,256.1	5,373.5	5,412.0	5,489.5	5,540.0	5,618.2	5,672.6	5,778.7	1.9	8.0
Ontario PT (000)	1,160.4	1,156.1	1,194.4	1,243.5	1,258.7	1,281.8	1,284.8	1,290.6	1,334.0	1,337.9	1,305.0	1,327.0	1,349.3	1.7	13.0
Ontario FT %	81.8%	82.1%	81.8%	81.2%	80.4%	80.4%	80.7%	80.7%	80.4%	80.5%	81.2%	81.0%	81.1%		
Ontario PT %	18.2%	17.9%	18.2%	18.8%	19.6%	19.6%	19.3%	19.3%	19.6%	19.5%	18.8%	19.0%	18.9%		
Brantford FT (000)	53.7	54.0	55.4	55.7	55.1	53.1	54.7	54.5	54.5	55.2	55.6	56.7	58.7	3.5	6.0
Brantford PT (000)	11.7	12.4	13.4	13.0	13.6	14.2	13.7	13.1	14.5	13.4	13.7	13.5	13.6	0.7	1.5
Brantford FT %	82.1%	81.3%	80.5%	81.1%	80.2%	78.9%	80.0%	80.6%	79.0%	80.5%	80.2%	80.8%	81.2%		
Brantford PT %	17.9%	18.7%	19.5%	18.9%	19.8%	21.1%	20.0%	19.4%	21.0%	19.5%	19.8%	19.2%	18.8%		

* Source: Stats Canada. Based on persons of working age, 15 years and over. Statistics Canada must be credited when data from this report is used.

** Monthly municipal rates are reported as 3 month moving averages. All others are reported monthly.

Data for the County of Brant is not reported separately by Stats Canada. Prepared by the City of Brantford's Economic Development Department. Available at advantagebrantford.ca



Absolute Numbers		2007	2008	2009	2010	2011	2012	2013	2014	2015	2016	2017	Y/Y	10 Y/Y
Canada	Population (000)	26,462	26,824	27,203	27,574	27,913	28,283	28,647	28,981	29,280	29,587	29,902	315	3,440
Canada	Labour Force (000)	17,847	18,122	18,250	18,451	18,620	18,810	19,038	19,125	19,278	19,441	19,663	223	1,817
Canada	Employed (000)	16,769	17,010	16,728	16,964	17,221	17,438	17,691	17,802	17,947	18,080	18,416	337	1,647
Canada	Unemployed (000)	1,077	1,112	1,523	1,486	1,399	1,372	1,347	1,322	1,331	1,361	1,247	-114	169
Ontario	Population (000)	10,321	10,446	10,571	10,712	10,850	10,998	11,142	11,269	11,386	11,523	11,685	161	1,364
Ontario	Labour Force (000)	6,992	7,074	7,080	7,161	7,227	7,276	7,384	7,419	7,426	7,490	7,580	90	588
Ontario	Employed (000)	6,546	6,610	6,433	6,538	6,658	6,703	6,823	6,878	6,923	7,000	7,128	128	583
Ontario	Unemployed (000)	446	464	648	623	569	574	560	541	503	490	452	-38	6
Brantford CMA	Population (000)	104.9	105.8	106.5	107.4	108.3	109.3	110.3	111.1	111.8	113.1	114.6	1.5	9.7
Brantford CMA	Labour Force (000)	73.1	73.1	76.2	73.9	74.8	73.7	73.6	73.6	73.5	74.7	76.0	1.3	2.9
Brantford CMA	Employed (000)	68.8	68.7	68.6	67.4	68.5	67.5	68.9	68.6	69.3	70.2	72.3	2.1	3.5
Brantford CMA	Unemployed (000)	4.3	4.4	7.6	6.5	6.4	6.2	4.7	5.0	4.2	4.5	3.7	-0.8	-0.6

* Source: Stats Canada. Based on persons of working age, 15 years and over. Statistics Canada must be credited when data from this report is used.

** Monthly municipal rates are reported as 3 month moving averages. All others are reported monthly.

Data for the County of Brant is not reported separately by Stats Canada. Prepared by the City of Brantford's Economic Development Department. Available at advantagebrantford.ca