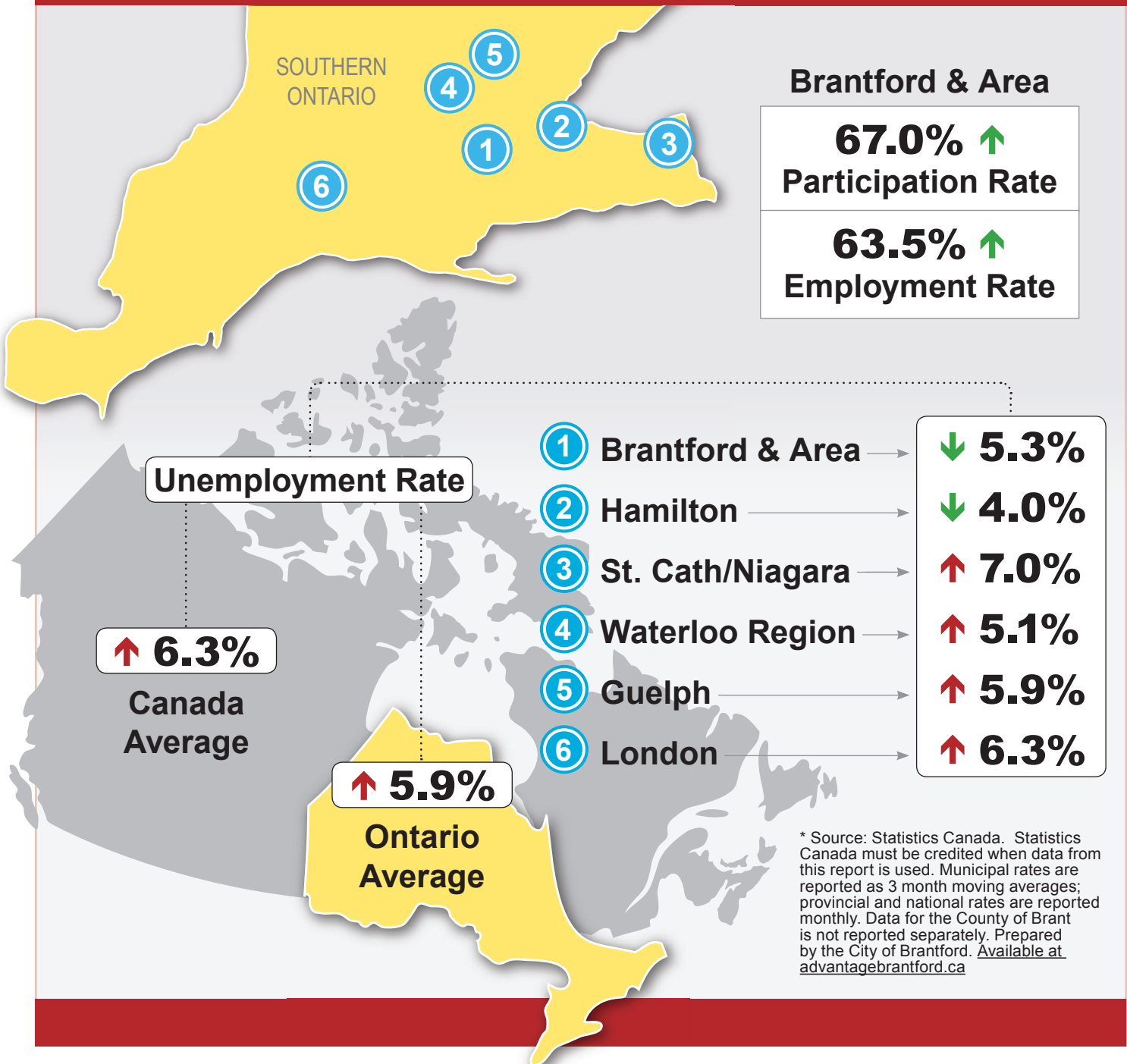
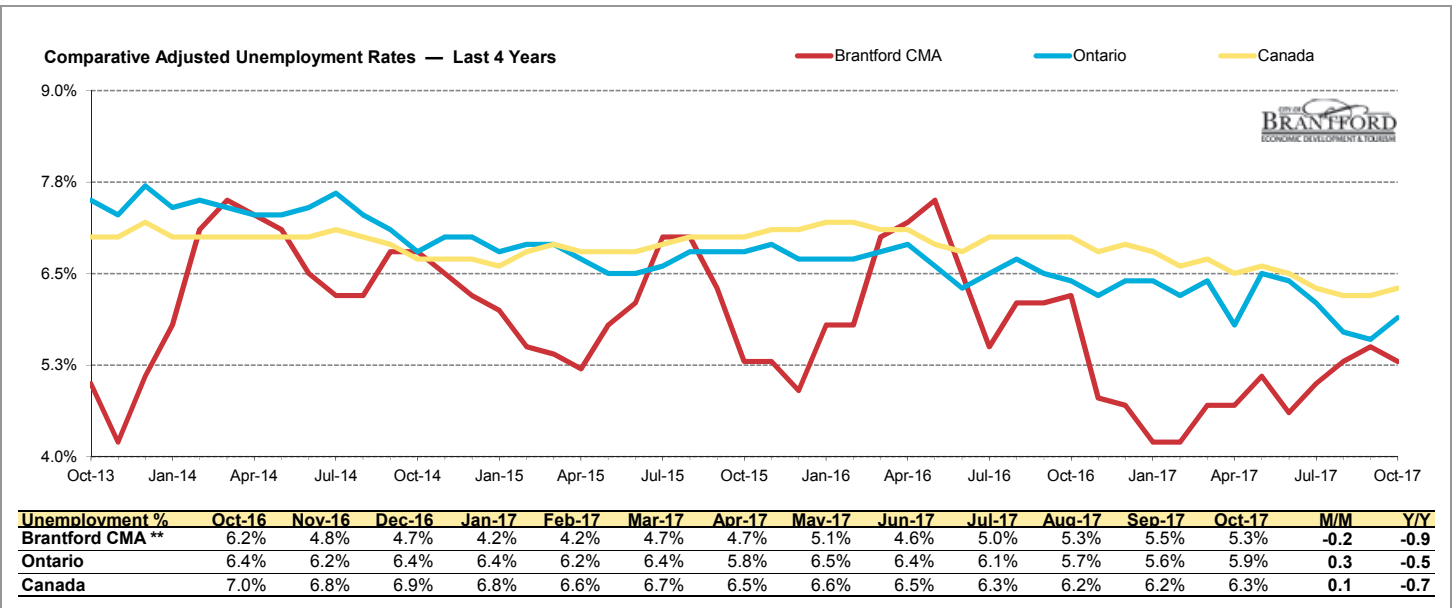
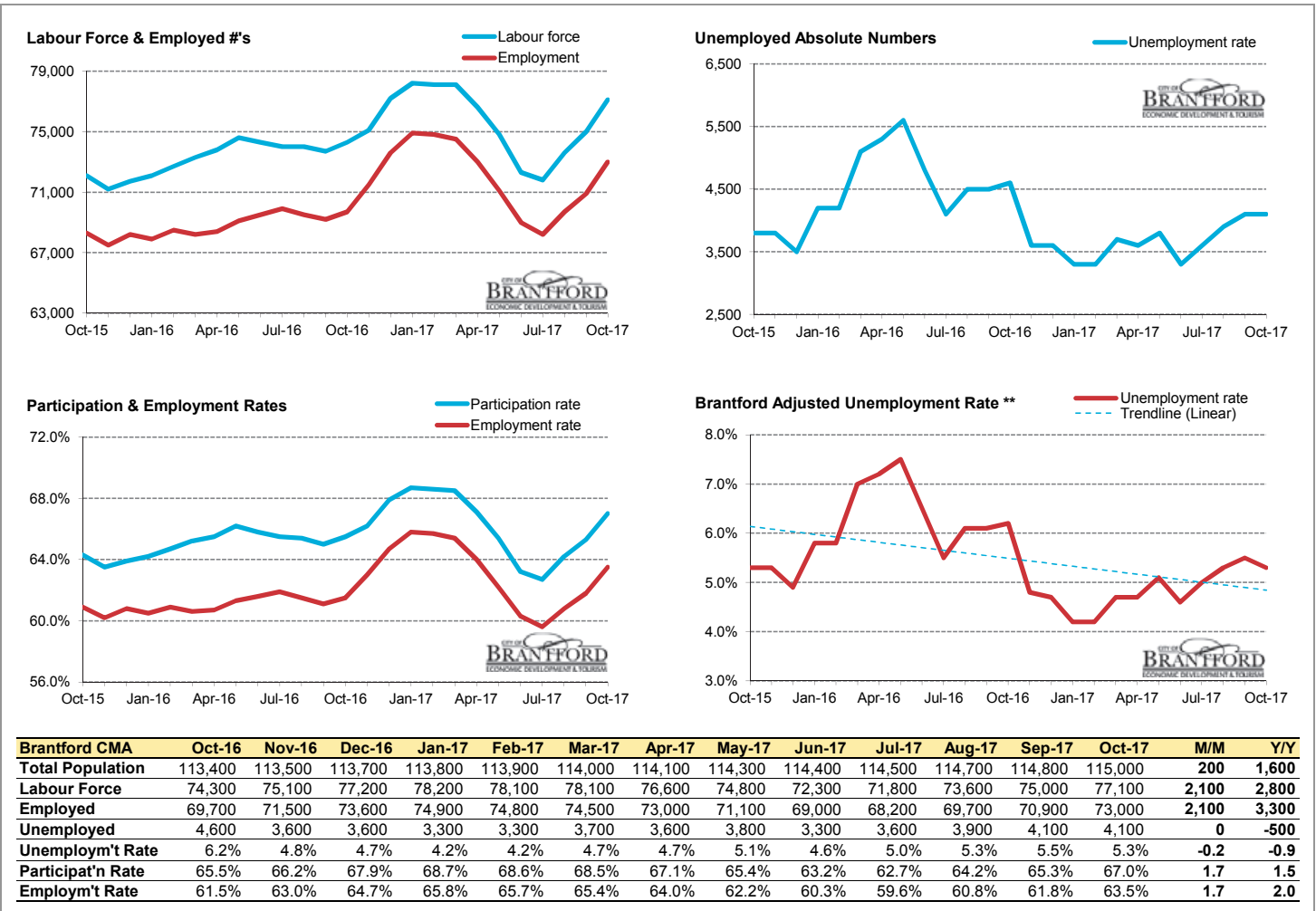




Local Labour Market Report*



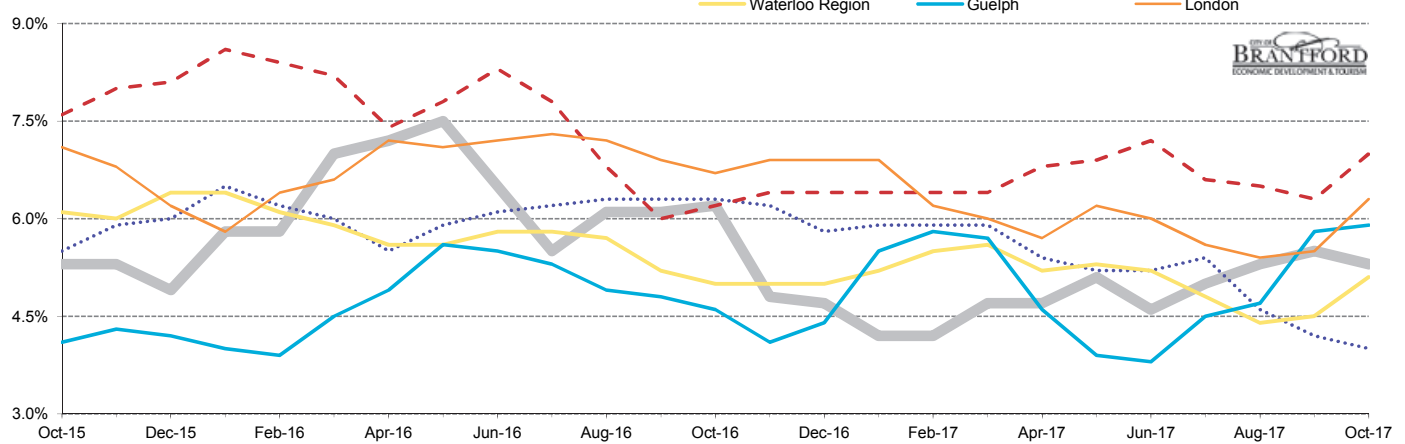


* Source: Stats Canada. Statistics Canada must be credited when data from this report is used.

** Municipal rates are reported as 3 month moving averages; provincial and national rates are reported monthly.

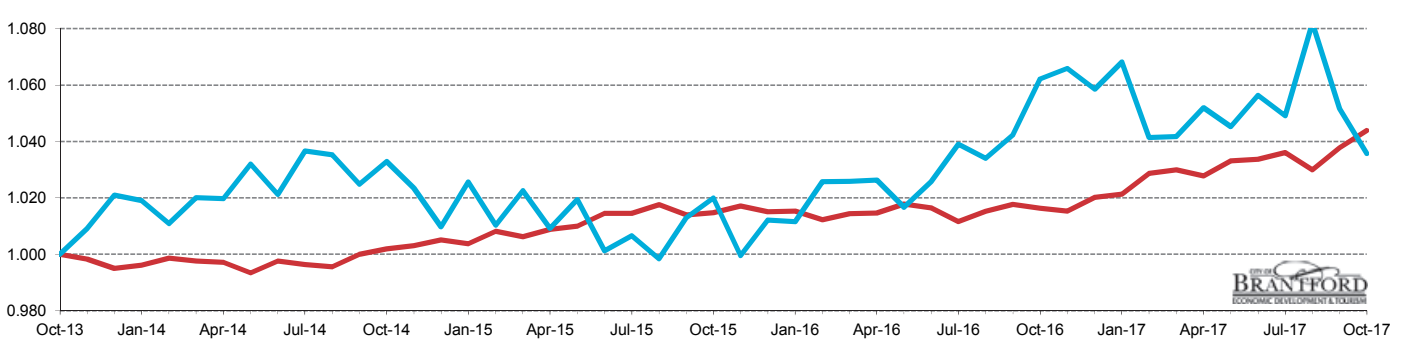
Data for the County of Brant is not reported separately by Stats Canada. Prepared by the City of Brantford. Available at advantagebrantford.ca

Comparative Local Adjusted Unemployment Rates** — Last 2 Years

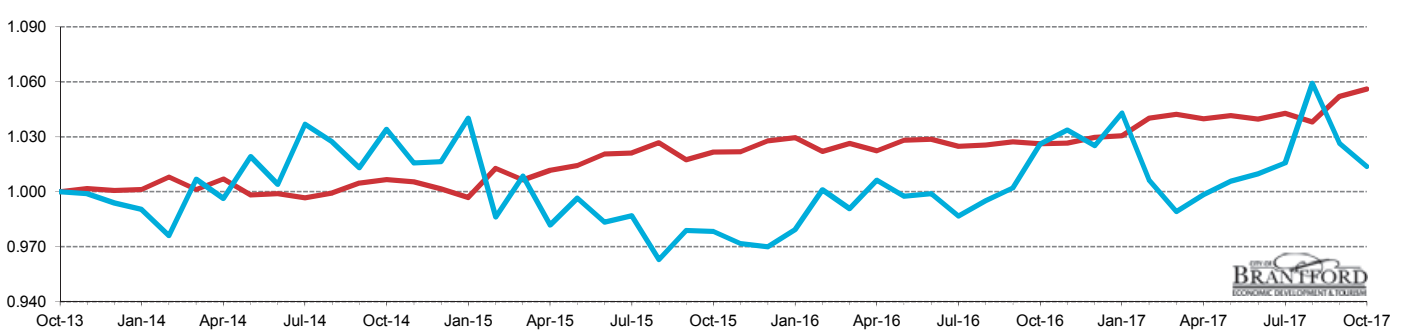


Unemployment %	Oct-16	Nov-16	Dec-16	Jan-17	Feb-17	Mar-17	Apr-17	May-17	Jun-17	Jul-17	Aug-17	Sep-17	Oct-17	M/M	Y/Y
Brantford CMA	6.2%	4.8%	4.7%	4.2%	4.2%	4.7%	4.7%	5.1%	4.6%	5.0%	5.3%	5.5%	5.3%	-0.2	-0.9
Hamilton	6.3%	6.2%	5.8%	5.9%	5.9%	5.9%	5.4%	5.2%	5.2%	5.4%	4.6%	4.2%	4.0%	-0.2	-2.3
St. Cath./Niagara	6.2%	6.4%	6.4%	6.4%	6.4%	6.4%	6.8%	6.9%	7.2%	6.6%	6.5%	6.3%	7.0%	0.7	0.8
Waterloo Region	5.0%	5.0%	5.0%	5.2%	5.5%	5.6%	5.2%	5.3%	5.2%	4.8%	4.4%	4.5%	5.1%	0.6	0.1
Guelph	4.6%	4.1%	4.4%	5.5%	5.8%	5.7%	4.6%	3.9%	3.8%	4.5%	4.7%	5.8%	5.9%	0.1	1.3
London	6.7%	6.9%	6.9%	6.9%	6.2%	6.0%	5.7%	6.2%	6.0%	5.6%	5.4%	5.5%	6.3%	0.8	-0.4

Index: Full Time vs Part Time Positions in Canada (based on same month 4 years ago)



Index: Full Time vs Part Time Positions in Ontario (based on same month 4 years ago)



FT vs PT Positions	Oct-16	Nov-16	Dec-16	Jan-17	Feb-17	Mar-17	Apr-17	May-17	Jun-17	Jul-17	Aug-17	Sep-17	Oct-17	% M/M	% Y/Y
Canada FT (000's)	14,621.9	14,606.9	14,677.8	14,693.6	14,798.7	14,817.1	14,785.9	14,862.9	14,871.0	14,906.1	14,818.0	14,930.0	15,018.7	0.6	2.7
Canada PT (000's)	3,559.4	3,572.0	3,547.3	3,579.7	3,489.9	3,490.9	3,525.2	3,502.9	3,540.0	3,515.7	3,626.1	3,524.1	3,470.7	-1.5	-2.5
Canada FT %	80.4%	80.4%	80.5%	80.4%	80.9%	80.9%	80.7%	80.9%	80.8%	80.9%	80.3%	80.9%	81.2%		
Canada PT %	19.6%	19.6%	19.5%	19.6%	19.1%	19.1%	19.3%	19.1%	19.2%	19.1%	19.7%	19.1%	18.8%		
Ontario FT (000's)	5,670.7	5,672.4	5,690.1	5,695.4	5,748.6	5,759.9	5,746.1	5,756.1	5,744.9	5,762.5	5,736.2	5,814.0	5,836.0	0.4	2.9
Ontario PT (000's)	1,357.4	1,367.6	1,356.3	1,379.8	1,331.2	1,308.7	1,321.0	1,330.7	1,335.9	1,343.8	1,401.3	1,358.0	1,341.3	-1.2	-1.2
Ontario FT %	80.7%	80.6%	80.8%	80.5%	81.2%	81.5%	81.3%	81.2%	81.1%	81.1%	80.4%	81.1%	81.3%		
Ontario PT %	19.3%	19.4%	19.2%	19.5%	18.8%	18.5%	18.7%	18.8%	18.9%	18.9%	19.6%	18.9%	18.7%		

* Source: Stats Canada. Statistics Canada must be credited when data from this report is used.

** Municipal rates are reported as 3 month moving averages; provincial and national rates are reported monthly.

Data for the County of Brant is not reported separately by Stats Canada. Prepared by the City of Brantford. Available at advantagebrantford.ca